

# ILLYRICA



# ANTIQUA

IN HONOREM DUJE RENDIĆ-MIOČEVIĆ

PROCEEDINGS OF THE INTERNATIONAL CONFERENCE  
ŠIBENIK 12<sup>th</sup>–15<sup>th</sup> SEPTEMBER 2013



Department of Archaeology  
Faculty of Humanities and Social Sciences, University of Zagreb

ILLYRICA



ANTIQUA

IN HONOREM DUJE RENDIĆ-MIOČEVIĆ

PROCEEDINGS OF THE INTERNATIONAL CONFERENCE

ŠIBENIK 12<sup>th</sup>–15<sup>th</sup> SEPTEMBER 2013

## IMPRESSUM

### NAKLADNIK / PUBLISHER

Odsjek za arheologiju Filozofskog fakulteta Sveučilišta u Zagrebu /  
Department of Archaeology, Faculty of Humanities and Social Sciences, University of Zagreb

### ZA NAKLADNIKA / REPRESENTING PUBLISHER

Željko Holjevac

### UREDNIK / EDITOR

Dino Demicheli

### RECENZENTI / REVIEWERS

Boris Olujić i Marko Dizdar

### OBLIKOVANJE I PRIPREMA ZA TISAK / DESIGN & DTP

Srećko Škrinjarić

### TISAK / PRESS

Tiskara Zelina d.d

### NAKLADA / PRINT RUN

300 primjeraka / copies

Izdavanje knjige financijski su poduprli Ministarstvo znanosti i obrazovanja Republike Hrvatske  
i Zaklada Hrvatske akademije znanosti i umjetnosti.



MINISTARSTVO ZNANOSTI  
I OBRAZOVANJA REPUBLIKE HRVATSKE



ZAKLADA HRVATSKE AKADEMIJE  
ZNANOSTI I UMJETNOSTI

Copyright © 2017

Filozofski fakultet Sveučilišta u Zagrebu, Odsjek za arheologiju

ISBN: 978-953-175-657-0

CIP zapis dostupan u računalnome katalogu Nacionalne i sveučilišne knjižnice u Zagrebu  
pod brojem 000966461.

### NASLOVNICA / FRONT COVER

Nadgrobna ara Kvinta Rutilija Ticijana i Kvinta Rutilija Prokula / Funerary altar of Q. Rutilius Titianus  
and Q. Rutilius Proculus, Muzej grada Šibenika / Šibenik City Museum

Urna vojničkog tribuna / The urn of a military tribune, Muzej grada Šibenika / Šibenik City Museum

### STRAŽNJA KORICA / BACK COVER

Titul Aplina Bardurija, Pladomenovog sina / Titulus of Aplis Bardurius, son of Pladomenus  
Muzej grada Šibenika / Šibenik City Museum

### FOTOGRAF / PHOTOGRAPHER

Tomislav Šmider

# ILLYRICA



# ANTIQUA

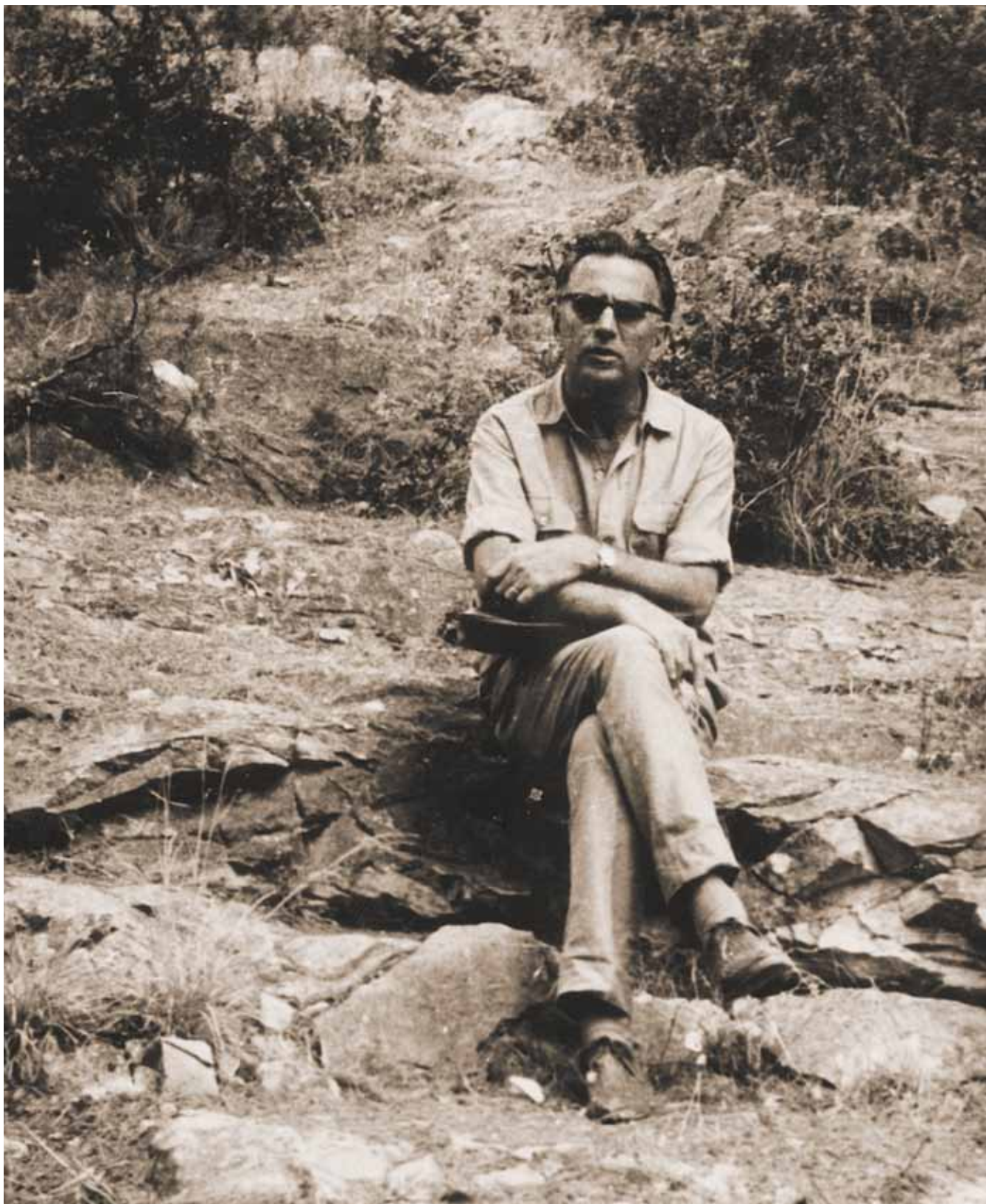
IN HONOREM DUJE RENDIĆ-MIOČEVIĆ

PROCEEDINGS OF THE INTERNATIONAL CONFERENCE  
ŠIBENIK 12<sup>th</sup>–15<sup>th</sup> SEPTEMBER 2013



Department of Archaeology  
Faculty of Humanities and Social Sciences, University of Zagreb

Zagreb 2017.



Duje Rendić-Miočević

## SADRŽAJ / CONTENTS

Dino Demicheli PREDGOVOR / FOREWORD	8
Radoslav Katičić DUJE RENDIĆ-MIOČEVIĆ I ILIRSKA ANTROPONIMIJA	13
Nenad Cambj DUJE RENDIĆ-MIOČEVIĆ I KNJIŽEVNI KRUG SPLIT	19
Ivan Mirnik OUR PROFESSOR DUJE RENDIĆ-MIOČEVIĆ	29
Marin Zaninović ZAŠTO RIDER?	37
Aleksandra Faber URBANE ZNAČAJKE U LOKACIJI I RASTERU ARHITEKTURE ANTIČKOG RIDERA (DANILO KOD ŠIBENIKA)	49
Vera Bitrakova-Grozdanova DASSARETES ET LYCHNIDIENS – NOUVELLES SOURCES ÉPIGRAPHIQUES ET NUMISMATIQUES	69
Maja Miše THE HELLENISTIC WARE FROM THE INDIGENOUS NECROPOLIS AT GRADINA IN DRAGIŠIĆ NEAR ŠIBENIK, CROATIA	83
Dinko Radić, Igor Borzić EXCAVATION OF THE NECROPOLIS OF THE KOPILA HILLFORT NEAR BLATO ON THE ISLAND OF KORČULA – PRELIMINARY REPORT	105
Toni Brajković, Željko Krnčević, Emil Podrug HISTORIJAT ARHEOLOŠKIH ISTRAŽIVANJA U DANILU	121
Marija Buzov LA DOCUMENTAZIONE ARCHEOLOGICA DEGLI SCAVI A DANILLO CONSERVATA PRESSO L'ISTITUTO DI ARCHEOLOGIA DI ZAGABRIA - LE RICERCHE DI DUJE RENDIĆ-MIOČEVIĆ, GIÀ MEMBRO DELL'ACCADEMIA CROATA DI SCIENZE, LETTERE ED ARTI	135
Marco Hubert Campigotto THE PSEPHISMA OF LUMBARDA: A NEW READING OF FRAGMENT N	157
Kornelija A. Giunio A CAPTAIN FROM NICOMEDIA ON A GREEK INSCRIPTION FROM ZADAR	165

## SADRŽAJ / CONTENTS

Marjeta Šašel Kos THE <i>STATI</i> OF RISINIUM	171
Bojan Lazinica, Dražen Maršić FOLLOWING THE TRAIL OF THE NEW LIBURNIAN <i>CIPPUS</i> FROM RAB. ARBA - NEW PRODUCTION CENTER OF LIBURNIAN <i>CIPPI</i>	187
Hrvoje Manenica TWO SUNDIALS FROM NARONA	201
Nikola Cesarik, Ivo Glavaš <i>COHORTES I ET II MILLIARIA DELMATARUM</i>	209
Tomasz Dziurdzik THE RELATION OF LATE ROMAN <i>EQUITES DALMATIAE</i> TO DALMATIA	223
Manfred Hainzmann <i>NAVALE,-IS</i> : SCHIFFSHEILIGTUM ODER INKUBATIONSHALLE? ÜBERLEGUNGEN ZUR ANTIKEN BAUTERMINOLOGIE	235
Mirjana Sanader, Dino Demicheli THE EARLY CHRISTIAN SERVICE OF <i>OSTIARIUS</i> ON AN UNPUBLISHED SARCOPHAGUS WITH THE INSCRIPTIONS FROM ŠUPLJA CRKVA SITE IN SOLIN ( <i>SALONA</i> )	253
Lorenzo Calvelli, Francesca Crema, Franco Luciani THE NANI MUSEUM: GREEK AND LATIN INSCRIPTIONS FROM GREECE AND DALMATIA	265
Ante Rendić-Miočević OPAŽANJA O NEKOLIKO NEOBJAVLJENIH ILI NEDOVOLJNO POZNATIH SILVANOVIH KULTNIH SLIKA	291
Ivan Basić <i>DALMATIAE, DALMATIARUM</i> : A STUDY IN HISTORICAL GEOGRAPHY OF THE ADRIATIC (IN THE LIGHT OF THE NEW INSCRIPTION FROM CORDOBA)	309
Danijel Dzino SCULPTOR MAXIMINUS AND HIS IMAGES OF THE GODDESS DIANA AND THE GIRL LUPA FROM THE DALMATIAN HINTERLAND	335
Ljubica Perinić SILVANUS' ATTRIBUTE FROM THE TRILJ MONUMENT	345
Toni Brajković RELIEF DEPICTIONS AND MOTIFS ON RIDER TOMBSTONES	357

Jovan J. Martinović <i>MVNICIPIVM S( ) E/OVVERO MVNICIPIVM R( )</i>	373
Robert Matijašić ROMANISATION OF THE HISTRI IN THE EARLY ROMAN PERIOD	379
Inga Vilogorac Brčić THE <i>TAUROBOLIUM</i> AND <i>CRIOBOLIUM</i> IN DALMATIA	391
Phyllis Culham THE DEEP ROOTS OF ROMAN COUNTERINSURGENCY IN ILLYRICUM 6-9 C.E.	401
Ivan Radman-Livaja THE ISSUE OF PEREGRINE POLYONYMY ON SISCIA LEAD TAGS	413
Maja Zeman ROMAN ARCHITECTURAL COMPLEX AT STARI ŠEMATORIJ IN DANILO ( <i>RIDER</i> ) – THE ISSUE OF FUNCTION	425
Alenka Miškec MONETARY CIRCULATION IN ISTRIA IN ANTIQUITY: THE FIRST AND SECOND CENTURIES AD	449
Tomislav Bilić PRE-IMPERIAL COINAGE FROM SISAK	457
Iva Kaić ROMAN INTAGLIOS WITH INSCRIPTIONS FROM THE ARCHAEOLOGICAL MUSEUM IN ZAGREB	479
Alexander Minchev UNUSUAL EARLY CHRISTIAN MARBLE CROSS-SHAPED RELIQUARY FROM THE ARCHAEOLOGICAL MUSEUM OF VARNA	487
Branka Migotti ROMAN SARCOPHAGI OF NORTHERN CROATIA FEATURING PECULIAR ICONOGRAPHIES	499
Jakov Vučić STONEMASON WORKSHOPS IN THE ROMAN PROVINCE OF DALMATIA DURING LATE ANTIQUITY	515
Bajram Doka ILLYRIAN LANGUAGES IN ALBANIAN DIALECTS	533



Lorenzo Calvelli, Francesca Crema, Franco Luciani

# THE NANI MUSEUM: GREEK AND LATIN INSCRIPTIONS FROM GREECE AND DALMATIA

Original scientific paper  
UDC 069(45 Venezia).51:930.271(497.58+495)"652"  
DOI 10.17234/IllyricaAntiqua.2.20

Lorenzo Calvelli  
Dipartimento di Studi Umanistici  
Università Ca' Foscari Venezia  
Dorsoduro 3484/D  
I-30123 Venice  
lorenzoc@unive.it

Francesca Crema  
Soprintendenza Archeologia Belle Arti  
e Paesaggio per l'area metropolitana di Venezia  
e le province di Belluno, Padova e Treviso  
Ministero dei beni  
e delle attività culturali e del turismo  
Palazzo Soranzo Cappello, Santa Croce 770  
I-30135 Venice  
francesca.crema@beniculturali.it

Franco Luciani  
School of History, Classics and Archaeology  
Faculty of Humanities and Social Sciences  
Newcastle University  
GB-NE1 7RU Newcastle upon Tyne  
franco.luciani@newcastle.ac.uk

*The Nani Museum was one of the most important private antiquarian collections in 18<sup>th</sup> century Venice. It was largely the creation of two brothers, Bernardo and Giacomo Nani, who acquired antiquities mainly from the Eastern coasts of the Adriatic Sea, the Ionian Islands, mainland Greece, and the Aegean. The collection included more than 400 ancient artefacts, half of which were Greek and Latin inscriptions. All of these objects were later dispersed: many of them are now located in different European and American museums, while several others are considered to be lost. This article presents a brief overview of the history of the Nani Museum, with specific attention to its epigraphic component. We also provide a list of all the Greek and Latin inscriptions from Greece and Dalmatia that once belonged to the Nani Museum, offering information about their ancient provenance, the steps of their dispersal, and, when possible, their present location.*

Keywords: *Epigraphy, Greek inscriptions, Latin inscriptions, Roman inscriptions, Archaeology, Dalmatia, Greece, Ionian Islands, Nani Museum, Private museums, Antiquarian collections, Antiquarianism, Venice*

## INTRODUCTION

The so-called Nani Museum was a collection of antiquities established in Venice during the 18<sup>th</sup> century by the patrician family Nani di San Trovaso. Including more than 400 artefacts, half of which were Greek and Latin inscriptions, it was one of the largest private antiquarian museums of the Serenissima Republic, but it is now completely dispersed. In the last decades several scholars have discussed different aspects of the history of this collection (Cavalier 1987; Favaretto 1991; Cavalier 1992; Cavalier 1996a; Cavalier 1996b; Favaretto 1996; Favaretto 2002: 206-220; Pontani 2008; Picchi 2009; Picchi 2012; Picchi 2015). Even though the Nani Museum was best known for its large number of inscribed monuments, so far it has never been studied from an epigraphic point of view. After a brief overview of the history of the Museum, this article tries to fill in this gap, offering for the first time a complete census of all the Greek and Latin inscriptions from Greece and Dalmatia, which once belonged to the Nani family.

### 1. THE CREATION OF THE NANI MUSEUM [F.C.]

The history of the Nani Museum begins with Paolo and Antonio Nani, two brothers who gathered several ancient objects from southern Greece in the late 1600s – early 1700s, immediately after the Venetian conquest of the Peloponnese. One generation later, the main core of the collection was built thanks to two of Antonio's sons: Bernardo (1712-1761) and Giacomo Nani (1725-1797). The former took up a political career in Venice, while the latter was forced to join the Venetian military navy due to the critical financial situation of his family (Del Negro 2012).

Bernardo, fond of ancient history, acquired a large number of Greek and Roman antiquities, including in particular inscriptions. In 1755, he set them up in his Venetian family palace by the San Trovaso church, in the Dorsoduro district (Fig. 1). Bernardo's brother, Giacomo, also played an essential role in the formation of the collection: while carrying out his military duties at sea, he looked for antiquities and sent them to Venice on the first available ship. Thanks to his efforts, the Museum rapidly expanded and incorporated not only the marbles purchased by Bernardo in Venice itself, but also several other antiquities coming from the Venetian *Stato da mar* (Dalmatia, Ionian Islands, south-western Peloponnese), as well as from Athens, the islands of the Aegean Sea, and the coasts of Asia Minor, although to a lesser extent. A detailed account of the exact circumstances of

these acquisitions is recorded in the mostly unpublished letters sent by Giacomo to his brother during his navy service, which are kept at the Padua Municipal Library, covering the years from 1741 to 1761 (BCPd, MSS CM 126, I-II; CM 155; CM 270). After Bernardo's death in 1761, Giacomo spent more time in Venice charged with political offices. Nevertheless, he continued to increase the family Museum by acquiring other Greek and Roman marbles, manuscripts, Egyptian antiquities, Kufic coins etc.

Inside the Nani palace, the artefacts were theatrically exhibited in the main hall, as well as in other rooms of the *piano nobile* and in the inner courtyard (Fig. 2). Through their collection, the Nani family joined the long history of Venetian antiquarianism, their Museum becoming a symbol of their rank, prestige, and cultural connections (Crema 2011: 259-261). The doors of the San Trovaso palace were open to local and foreign visitors and scholars, as attested by numerous academic pamphlets published during the second half of the 18<sup>th</sup> century.

### 2. THE DISPERSAL OF THE NANI MUSEUM: EARLY STAGES [L.C.]

Giacomo Nani died in 1797, only forty days before the fall of the Venetian Republic. His young son Antonio, born in 1791, inherited the collection, but did not develop the same passion for antiquity of the earlier members of his family. In 1815, he prompted the Venetian abbot Francesco Driuzzo to publish a complete catalogue of the Nani Museum (*Collezione* 1815). What could appear as a scholarly enterprise was in fact most probably a detailed advertisement for potential purchasers. Devoid of commentaries, but full of engravings, Driuzzo's book almost looks like a sale catalogue (Fig. 3). Yet its value for scholars is enormous, as it offers a complete census of the contents of the collection before its dispersal began. Immediately after the publication of Driuzzo's catalogue, Antonio Nani was obliged to hand over the Museum to his father-in-law, Giovanni Domenico Almorò Tiepolo (Borean 2009), who transferred it in 1821 to his palace in the San Polo district (Fig. 4). Soon after that, sections of the collection began to be sold. In 1824-25 a stock of 59 ancient objects was purchased by the Milanese art merchant Giuseppe Vallardi; many of them were later acquired by the painter Pelagio Palagi and are now in the Museo Civico in Bologna (Picchi 2009). In 1828 a large number of antiquities was offered again to Vallardi and to Antonio Sanquirico, the owner of one of the most successful art dealing establishments in 19<sup>th</sup> cen-

ture Venice (Perry 1982). In 1829 some bronzes from the Nani Museum were sold to Leopoldo Cicognara, who bought them on behalf of Count James-Alexandre de Pourtalès-Gorgier, the owner of a well-known collection of antiquities in Paris (Boisset 2005); at least one of them ended up in the collections of the Petit Palais (Meyer-Petit 1980: 207). Several ancient artefacts were acquired by the Venice-based German antiquarian Johannes David Weber; they are now scattered among the National Archaeological Museum and the Patriarchal Seminary in Venice, and the National Museum of Denmark in Copenhagen (Basaldella 1996; Crema 2007). In December 1830 another art dealer, Auguste-Louis De Sivry, a Frenchman residing in Venice, bought "87 sculpture", 46 of which were resold in 1841 to the Musée Calvet in Avignon, where they are still kept, while others ended up in the Museo Civico in Bologna (Cavalier 1996a: 40; Picchi 2012: 100-101).

Giovanni Domenico Almorò Tiepolo died on 7 January 1836. A few months later his heirs decided to organise an international auction to get rid of the Museum that once belonged to the Nani. Several important masterpieces were acquired in 1841 by the Königliches Museum in Berlin through the Venetian art dealer Francesco Pajaro: they are still in the Berliner Antikensammlung (Conze 1891: VIII). Around the same years the largest portion of the Nani Museum was bought by Pietro Busenello (also spelt Businello), a member of a Venetian family that had been raised to nobility under the Austrians. He purchased at least 113 Greek and Latin inscriptions, plus several statues and reliefs, and moved them all to his elegant villa in Legnaro, a small town in the countryside near Padua (Luciani 2013: 289).

### 3. THE DISPERSAL OF THE NANI MUSEUM: LATER STAGES [F.L.]

After Pietro Busenello's death in 1847, the part of the Nani Museum that he had acquired was divided between his sisters Pierina and Anna Giulia, and their husbands, the noblemen Tiberio Zuccato from Venice and Giuseppe Pagani Sr. from Belluno (Luciani 2013: 290). The new heirs soon reached the decision to offer the whole collection for sale, but they probably encountered difficulties with selling such a large amount of artefacts: only some Greek and Roman sculptures were purchased by the Russian emperor Nicholas I in 1850-1851 and then transferred to the Hermitage in Saint Petersburg, where they are still kept (Kruglov 2007). The largest portion of the collection remained in the villa in Legnaro.

During the 1860s, with the rapid extinction of the entire Busenello dynasty, all of the family properties passed to Marino Pagani, Giuseppe Pagani Sr.'s son (Luciani 2013: 292-293). During that period, in the spring-summer of 1862 and especially in August 1867, Theodor Mommsen, who was working on the third and the fifth volumes of the *Corpus Inscriptionum Latinarum* (CIL), visited the villa in Legnaro, in order to inspect the epigraphic collection (Calvelli 2012: 110). Mommsen found there a total of 71 Latin inscriptions, 48 of which he reputed to come from Greece and Dalmatia.

At the end of 1867 or a few months later, Marino Pagani and his son Giuseppe Pagani Jr. moved several ancient artefacts from the villa in Legnaro to their family house in Belluno (Luciani 2013: 295). After Marino's death in 1892, Giuseppe Pagani Jr. soon decided to get rid of the collection that he had entirely inherited. He must have contacted some art dealers based in Rome: in fact, several antiquities from the Nani Museum were seen for sale in Rome between the end of the 19<sup>th</sup> and the early 20<sup>th</sup> centuries (De Rossi 1890: 55). Some of them were acquired by the Berlin Staatliche Museen through the mediation of Ludwig Pollak (Pollak 1994: 143, 165).

In 1901, the last Pagani heirs sold the remaining pieces of the former Nani Museum to Paolo Camerini, a major industrialist from Padua, who transferred them to Piazzola sul Brenta, a small town located in the nearby countryside (Agostinetti 1980: 173-180; Favaretto 1991: 219). In Piazzola Camerini had acquired the famous Villa Contarini, an impressive baroque building, where he displayed his newly bought epigraphic collection (Fig. 5). Even though several losses occurred during the Second World War and in the following decades, about 50 Greek and Latin inscriptions are still preserved in the Villa, which currently belongs to the Regione del Veneto.

## 4. GREEK INSCRIPTIONS [F.C.]

The Nani Museum included at least 99 Greek inscriptions. Their findspots mirror the routes followed by Giacomo Nani while carrying out his military duties at sea. Indeed, the largest group of inscriptions (about 40) comes from the Venetian *Isole del Levante*, now the Ionian Islands, where Giacomo was stationed for long periods. From Corfu he sent out for antiquities in the surrounding islands (Ithaka, Kephallenia, Leukas) or on the opposite continental coast sites of Epirus and Akarnania (8 inscriptions from Buthrotum, Nikopolis, and other sites of Akarnania)<sup>1</sup>. The frequent journeys to the Venetian ports of the Morea are reflected in the relevant number of inscriptions from the regions of Messenia (3), Lakonia (7), Argolis (2), and other sites of the Peloponnesus (2), for a total of 14 inscriptions of Peloponnesian origin, 2 of which were purchased at the beginning of the 18<sup>th</sup> century by Antonio Nani<sup>2</sup>. Some rare journeys to Smyrna, to escort cargo ships, were the chance for Giacomo to gather inscriptions from the island of Milos (2), and from Thessaloniki (3) (Crema 2011: 262-264). As we understand from his letters, the contacts with Athens and the Aegean Islands were otherwise rare from Corfu<sup>3</sup>. In fact, many of the inscriptions from these areas (in total 5 from Athens, 5 from Delos-Rheneia, 1 from Naxos, 1 from Paros, 2 from other uncertain sites of the Aegean Islands) were probably purchased in other ways, some of them already being part of other Venetian private collections at the time. To these inscribed monuments we must add 3 inscriptions from the coast of Asia Minor, 1 from Perinthos and 11 more inscriptions whose geographical origin is unknown.

<sup>1</sup> BCPd, MS CM 270, 227: “C’è sulle rive opposte a quest’isola (viz. Corfu) il sito dell’Antica Selva di Dodona. Mi parrebbe utile cosa di poterne avere iscrizioni, disegni delle ruine, pianta di quest’antico tempio, ed altre memorie concernenti a quel luogo [...]. Crederei pertanto di ben servire al vostro museo se trarre potessi de’ lumi circa a un tale proposito”. Letter from Giacomo to Bernardo Nani (Corfu, 29 May 1758). BCPd, MS CM 270, 369: “Spedirò in questo inverno l’Abbate (viz. Cirillo Martini) a fare un giro alla Parga e Prevesa per raccogliere antichità. Questi sono luoghi che le navi non visitano”.

<sup>2</sup> Giacomo took advantage of several personal contacts for his researches, as comes clear, for instance, in BCPd, MS CM 126, I, 318: “Dal Console Messalà di Patrasso mi furono mandate 128 medaglie con alcune d’argento e qualche corniola. Nel mandarle mi scrive che io lo raccomandai a voi per la sua conferma di console. Gli risposi che l’avrei fatto, e che intanto il pregava a voler estendere le diligenze sue per la Morea in proposito ad iscrizioni”. Letter from Giacomo to Bernardo Nani (30 May 1754).

<sup>3</sup> BCPd, MS 126, II, 85: “Mi consolo poi dei due bassi rilevi di Atene. Qui non ci è corrispondenza con quel luogo”. Letter from Giacomo to Bernardo Nani (1 September 1760).

The efforts to trace the monuments after the collection’s dispersal allow us to identify the present location of 53 inscriptions: Avignon (15); Piazzola sul Brenta (15), Rome (9), Berlin (4), Budapest (3), Saint Petersburg (1), Copenhagen (1), Bruxelles (1), London (1), Belluno (1), Verona (1), and Venice (1). In particular, three inscriptions, considered to be lost by the *IG* editors, have now been detected: two stelai are kept in the Villa Contarini at Piazzola sul Brenta (*IG* IX, 1<sup>2</sup>, 4, 839 and 906)<sup>4</sup>, a lead sling bullet is in the National Museum of Denmark in Copenhagen (*IG* IX, 1<sup>2</sup>, 4, 1564(4))<sup>5</sup>. The following list offers for the first time a complete census of all the Greek inscriptions from the Nani Museum, indicating for each document its main editions, and its place of origin and current location, if known. Byzantine inscriptions are not included in the list<sup>6</sup>. The inscription on the base of a statue of Athena, now at Avignon (Musée Calvet, inv. E38), must be considered inexistent and was probably added to the drawing (Cavalier 1992: 90)<sup>7</sup>.

<sup>4</sup> Agostinetti 1980: 188 Nos. 15, 16.

<sup>5</sup> The bullet sling was acquired in 1839 at the auction of Frederik Münter’s collection. As we understand from his correspondence, Münter had purchased it in 1825 from Johannes David Weber, through the intermediation of Friedrich Creuzer (*Aus dem Briefwechsel* 1944: 208; cf. Fischer-Hansen 2009: 128, Fischer-Hansen 2015: 95). We are especially grateful to Anne Haslund (National Museum of Denmark) for her precious help and for informing us about the present location of the object.

<sup>6</sup> *CIG* IV, 8620, 8751, 8775 and 8818 (= *Collezione* 1815, Nos. 64, 388, 390 and 392). Of these, *CIG* IV, 8620 and 8751 (= Guillou, *RIGMit* 43 and 44) are currently located in the Villa Contarini at Piazzola sul Brenta; Zorzi (forthcoming).

<sup>7</sup> *CIG* IV, 6833 (= *Collezione* 1815, No. 18).

No.	Collezione 1815	EDITIONS	TYPE OF INSCRIPTION	TYPE OF MONUMENT	ACQUISITION HISTORY	PROVE-NANCE	PRESENT LOCATION
<i>IONIAN ISLANDS</i>							
1	59	IG IX, 1 <sup>2</sup> , 4, 787	Honorific decree	Statue base	First published in 1702 (Montfaucon 1702: 427 No. 20, after a transcription by Apostolo Zeno). Found in <i>Paleopolis</i> (Corfu) and sent to Venice in 1759 [BCPd, MS CM 270, 375-377. Letter from Giacomo to Bernardo Nani (Corfu, 28 January 1759)]	Kerkyra	Unknown
2	-	IG IX, 1 <sup>2</sup> , 4, 790	Proxeny decree	Bronze tablet	" <i>Ex ipso MUSEO NANIO ineditum Corcyraensis decreti de προξενία/ hospitii iure fragmentum, cuius lamina aerea Palaeopoli Corcyrae nuper est reperta</i> " (Biagi 1785a: 303)	Kerkyra	Venezia, Museo Archeologico Nazionale (inv. 465 Correr)
3	44	IG IX, 1 <sup>2</sup> , 4, 839	Dedication	Slab	Already known in 1675 (cf. Mustoxidi 1848: 219); first published in 1702 (Montfaucon 1702: 422 No. 2, after a transcription by Apostolo Zeno)	Kerkyra	Piazzola sul Brenta, Villa Contarini (inv. 18)
4	177 = 6	IG IX, 1 <sup>2</sup> , 4, 854	Dedication	Base	Found in <i>Paleopolis</i> (Corfu), sent to Venice in 1759	Kerkyra	Unknown
5	61	IG IX, 1 <sup>2</sup> , 4, 886	Epitaph	Stele	Found in <i>Paleopolis</i> (Corfu), sent to Venice in 1759	Kerkyra (Leukas? D. Strauch)	Roma, Museo Nazionale Romano (inv. 40610)
6	93	IG IX, 1 <sup>2</sup> , 4, 906	Epitaph	Stele	Sent to Venice from Corfu in 1759	Kerkyra	Piazzola sul Brenta, Villa Contarini (inv. 11)
7	70	IG IX, 1 <sup>2</sup> , 4, 914	Epitaph	Stele	Sent to Venice from Leukas in 1759	Kerkyra (D. Strauch)	Budapest, Szépművészeti Múzeum (inv. 4747)
8	71	IG IX, 1 <sup>2</sup> , 4, 915	Epitaph	Stele	Found in <i>Paleopolis</i> (Corfu), sent to Venice in 1759	Kerkyra	Unknown
9	90	IG IX, 1 <sup>2</sup> , 4, 924	Epitaph	Stele	Found in <i>Paleopolis</i> (Corfu), sent to Venice in 1760	Kerkyra	Unknown
10	60	IG IX, 1 <sup>2</sup> , 4, 928	Funerary epigram	Stele	First published in 1725 (Almorò Albrizzi, <i>Foglietti letterari</i> , 26 marzo 1725). Found at the foot of a hill and then moved to the Teotochi's residence in Corfu [BCPd, MS CM 126, I, 226. Letter from Giacomo to Bernardo Nani (1753)]. Sent to Venice in 1759	Kerkyra	Unknown
11	62	IG IX, 1 <sup>2</sup> , 4, 946	Epitaph	Stele	Found in <i>Paleopolis</i> (Corfu), sent to Venice in 1758	Kerkyra	Unknown
12	89	IG IX 1 <sup>2</sup> , 4, 966	Epitaph	Slab	Sent to Venice from Corfu in 1759. [BCPd, MS CM 270, 375-376. Letter from Giacomo to Bernardo Nani (Corfu, 28 January 1758)]	Kerkyra	Unknown
13	74	IG IX, 1 <sup>2</sup> , 4, 967	Epitaph	<i>Cuneus fictilis</i>	Sent to Venice from Corfu in 1759	Kerkyra	Unknown
14	105	IG IX, 1 <sup>2</sup> , 4, 977	Epitaph	Stele	Found in <i>Paleopolis</i> (Corfu), sent to Venice in 1759	Kerkyra	Unknown
15	75	IG IX, 1 <sup>2</sup> , 4, 1004	Epitaph	<i>Cuneus fictilis</i>	Sent to Venice from Corfu in 1759	Kerkyra	Unknown
16	73	IG IX, 1 <sup>2</sup> , 4, 1027	Epitaph	<i>Cuneus fictilis</i>	Sent to Venice from Corfu in 1759	Kerkyra	Unknown
17	104	IG IX, 1 <sup>2</sup> , 4, 1028	Epitaph	Stele	Found in <i>Paleopolis</i> (Corfu) in 1757. [BCPd, MS CM 270, 108, 115. Letter from Giacomo to Bernardo Nani (Corfu, 18 February 1758)]	Kerkyra	Piazzola sul Brenta, Villa Contarini (inv. 5)
18	107 = 170	IG IX, 1 <sup>2</sup> , 4, 1032	Epitaph	Slab		Kerkyra (P. Lombardi)	Roma. Museo Nazionale Romano (inv. 40647)

No.	Collezione 1815	EDITIONS	TYPE OF INSCRIPTION	TYPE OF MONUMENT	ACQUISITION HISTORY	PROVE-NANCE	PRESENT LOCATION
19	406	IG IX, 1 <sup>2</sup> , 4, 1087	<i>Instrumentum</i>	Tile	Found in <i>Paleopolis</i> in 1759	Kerkyra	Unknown
20	351	IG IX, 1 <sup>2</sup> , 4, 1151	<i>Instrumentum</i>	Lead sling bullet	Found in <i>Paleopolis</i> (Corfu), sent to Venice in 1759	Kerkyra	Unknown
21	72	IG IX, 1 <sup>2</sup> , 4, 1441	Epitaph	Stele	Found in Leukas by Abbot Cirillo Martini and sent to Venice in 1759 [BCPd, MS CM 270, 401, 403. Letter from Giacomo to Bernardo Nani (Corfu, 3 March 1759)]	Leukas	Unknown
22	87	IG IX, 1 <sup>2</sup> , 4, 1445	Epitaph	Stele	Found in Leukas by Abbot Cirillo Martini and sent to Venice in 1759 [BCPd, MS CM 270, 401, 403. Letter from Giacomo to Bernardo Nani (Corfu, 3 March 1759)]	Leukas	Unknown
23	69	IG IX, 1 <sup>2</sup> , 4, 1448	Epitaph	Stele	Found in Leukas by Abbot Cirillo Martini and sent to Venice in 1759 [BCPd, MS CM 270, 401, 403. Letter from Giacomo to Bernardo Nani (Corfu, 3 March 1759)]	Leukas	Unknown
24	63	CIL III, 574, cf. p. 989, 1320 IG IX, 1 <sup>2</sup> , 4, 1451	Epitaph (Latin/Greek)	Stele	Sent to Venice from Leukas	Leukas	Piazzola sul Brenta, Villa Contarini (inv. 13)
25	86	IG IX, 1 <sup>2</sup> , 4, 1454	Epitaph	Stele	Found in Leukas by Abbot Cirillo Martini and sent to Venice in 1759 [BCPd, MS CM 270, 401, 403. Letter from Giacomo to Bernardo Nani (Corfu, 3 March 1759)]	Leukas	Piazzola sul Brenta, Villa Contarini (inv. 1)
26	111	IG IX, 1 <sup>2</sup> , 4, 1460	Epitaph	Stele		Leukas? (D. Strauch)	Unknown
27	91	IG IX, 1 <sup>2</sup> , 4, 1461	Epitaph	Stele	Found in Leukas by Abbot Cirillo Martini and sent to Venice in 1759 [BCPd, MS CM 270, 401, 403. Letter from Giacomo to Bernardo Nani (Corfu, 3 March 1759)]	Leukas	Unknown
28	405	IG IX, 1 <sup>2</sup> , 4, 1462	Epitaph	Stele		Leukas? (D. Strauch)	Unknown
29	103	IG IX, 1 <sup>2</sup> , 4, 1463	Epitaph	Stele	Sent to Venice in 1761 [BCPd, MS CM 126, II, 242a; 262. Letters from Giacomo to Bernardo Nani (Corfu, 28 and 30 March 1761)]	Leukas? (D. Strauch)	Unknown
30	58	IG IX, 1 <sup>2</sup> , 4, 1495	Honorific	Statue base	Found near Lixouri, sent to Venice in 1758 [BCPd, ms CM 270, 161-166. Letter from Giacomo to Bernardo Nani (Corfu, 13 April 1758)]	Kephallenia, Pale	Piazzola sul Brenta, Villa Contarini (inv. 17)
31	78	IG IX, 1 <sup>2</sup> , 4, 1556 Cf. Luciani 2013: 300 No. 1.	Epitaph	Stele	Found in Fiskardo (Meletios 1728: 327), purchased by Antonio Nani. Sent to Venice from Corfu in 1700. First published in 1702 (Montfaucon 1702: 404 No. 8)	Kephallenia, Same	Belluno, Museo Civico (inv. 321)
32	351	IG IX, 1 <sup>2</sup> , 4, 1564(4)	<i>Instrumentum</i>	Lead sling bullet	Sent to Venice from Corfu in 1761 [BCPd, MS CM 126, II, 220. Letter from Giacomo to Bernardo Nani (Corfu, 20 February 1761)]	Kephallenia, Same	København, Nationalmuseet (inv. ABa 181)
33	95	IG IX, 1 <sup>2</sup> , 4, 1570	Funerary epigram	Stele	Sent to Venice from Kephallenia in 1760 [BCPd, MS CM 126, II, 164, 167, 170-171. Letter from Giacomo to Bernardo Nani (7 November 1760)]	Kephallenia	Piazzola sul Brenta, Villa Contarini (inv. 10)
34	77	IG IX, 1 <sup>2</sup> , 4, 1571	Epitaph	Slab	Found in 1755 in Kephallenia [BCPd, MS CM 126, I, 382, 384. Letter from Giacomo to Bernardo Nani (Corfu, 23 May 1755)]	Kephallenia	Roma, Museo Nazionale Romano (inv. 40666)

No.	Collezione 1815	EDITIONS	TYPE OF INSCRIPTION	TYPE OF MONUMENT	ACQUISITION HISTORY	PROVENANCE	PRESENT LOCATION
35	112	AE 1984, 109 <i>IG IX, 1<sup>2</sup>, 4, 1572</i>	A) Epitaph (Greek) B) Epitaph (Latin)	Slab		Kephallenia (P. Lombardi) "arridet etiam Actia Nicopolis" ( <i>IG</i> )	Roma, Museo Nazionale Romano (inv. 40608)
36	76	<i>IG IX, 1<sup>2</sup>, 4, 1573</i>	Epitaph	Slab	Sent to Venice from Kephallenia in 1754	Kephallenia	Unknown
37	17	<i>IG IX, 1<sup>2</sup>, 4, 1700</i>	<i>Lex sacra</i>	Slab	Found in a church near Vathy, sent to Venice in 1758 [BCPd, MS CM 270, 262-264. Letter from Giacomo to Bernardo Nani (Zante, 22 June 1758)]	southern Ithaka	Bruxelles, Musée du Cinquantenaire (inv. A 973)
38	96	<i>IG IX, 1<sup>2</sup>, 4, 1720</i>	Funerary epigram	Stele		Ithaka	Unknown
39	113	<i>CIG IV, 6924</i>	Epitaph	Stele		Ionian Islands? north-western Greece?	Piazzola sul Brenta, Villa Contarini (inv. 3)
40	101	<i>CIG IV, 6949</i> Heckler 1929: 38 No. 27	Epitaph	Stele	Sent to Venice in 1761 [BCPd, MS CM 126 II, 242a; 262. Letters from Giacomo to Bernardo Nani (Corfu, 28 and 30 March 1761)]	Ionian Islands? western Greece (Heckler)	Budapest, Szépművészeti Múzeum (inv. 4725)
<b>AKARNANIA AND EPEIROI</b>							
41	-	<i>IG IX, 1<sup>2</sup>, 2, 574</i>	Epitaph	Stele		Akarnania	Budapest, Szépművészeti Múzeum (inv. 4789)
42	2	<i>CIG II, 1822</i> Samsaris, <i>Nikopolis</i> , 12	Dedication	Altar	Found in 1760 in the church of Saint John near Preveza [BCPd, MS CM 126, II, 125-126, 130, 190-191. Letter from Giacomo to Bernardo Nani (5 October 1760)]	Nikopolis	Berlin, Staatliche Museen zu Berlin, Antikensammlung (inv. 1157)
43	16	<i>CIG II, 1947</i> Samsaris, <i>Nikopolis</i> , 16	Dedication	Column		Nikopolis	Unknown
44	83	<i>CIG II, 1811b</i> Samsaris, <i>Nikopolis</i> , 30	Honorific	Slab	Found in Nikopolis by Abbot Cirillo Martini and sent to Venice in 1759 [BCPd, MS CM 270, 401, 403. Letter from Giacomo to Bernardo Nani (Corfu, 3 March 1759)]	Nikopolis	Piazzola sul Brenta, Villa Contarini (inv. 9)
45	84 (+188)	<i>CIG II, 1812</i> Samsaris, <i>Nikopolis</i> , 122	Epitaph	Statue base	Sent to Venice in 1729. At first in M. Antonio Diedo's Museum (Maffei 1749: CCCLXXIII No. 7)	Nikopolis	Unknown "A Rome, puis en Espagne?", Reinach 1908: 615 No. 8
46	85 (+189)	<i>CIG II, 1813</i> Samsaris, <i>Nikopolis</i> , 123	Epitaph	Statue base	Sent to Venice in 1729. At first in M. Antonio Diedo's Museum (Maffei 1749: CCCLXXIII No. 8)	Nikopolis	Unknown.
47	175	<i>CIG II, 1944</i>	Honorific	Stele	Found in Nikopolis in 1760 [BCPd, MS CM 126, II, 125, 191. Letter from Giacomo to Bernardo Nani (5 October 1760)]	Nikopolis	Piazzola sul Brenta, Villa Contarini (inv. 7)
48	171	<i>I.Bouthrotos</i> , 185	Dedication	Stele	In 1436 seen in Butrint, "in <i>moenibus</i> ", by Cyriacus of Ancona	Bouthrotos	Unknown

No.	Collezione 1815	EDITIONS	TYPE OF INSCRIPTION	TYPE OF MONUMENT	ACQUISITION HISTORY	PROVE-NANCE	PRESENT LOCATION
<i>PELOPONNESUS</i>							
49	33	<i>IG V, 1, 1352</i>	Honorific	Stele	First published in 1702 (Montfaucon 1702: 426-427 No. 19, after a transcription by Apostolo Zeno). Found in a wall of the Corfu theatre [BCPd, MS CM 270, 110, 112; 129; 329; 354, 356, 358. Letters from Giacomo to Bernardo Nani (Corfu, 18 February 1758; 26 January 1758; 1 and 26 December 1758)]. Sent to Venice in 1759	Abia	Piazzola sul Brenta, Villa Contarini (inv. 6)
50	14	<i>IG V, 1, 1499</i> Cavalier 1996c: 152-156 No. 7	Dedication	Stele	Sent to Venice from the Peloponnesus by Antonio Nani in 1705	Messenia?	Avignon, Musée Calvet (inv. E 20)
51	15	<i>IG V, 1, 1500</i> Cavalier 1996c: 156-157 No. 8	Dedication	Stele		Messenia?	Avignon, Musée Calvet (inv. E 21)
52	32	<i>IG V, 1, 380</i> Lombardi 1980: 182 No. 1	Honorific	Slab	Sent to Venice from Kythira in 1757 [BCPd, MS CM 270, 54, 59. Letter from Giacomo to Bernardo Nani (Zante, 3 November 1757)]	Sparta	Roma, Museo Nazionale Romano (inv. 47151)
53	102	<i>IG IX, 1<sup>2</sup>, 4, 1569</i>	A) Epitaph B) Epitaph	Stele	Sent to Venice from Kythira in 1757 [BCPd, MS CM 270, 54, 59. Letter from Giacomo to Bernardo Nani (Zante, 3 November 1757); <i>Memorie per servire all'istoria letteraria</i> , XII, 1758: 218-219]	Sparta	Roma, Museo Nazionale Romano (inv. 40608)
54	40	<i>IG V, 1, 1165</i>	Honorific	Statue base?	Found in 1755 "in Pagania" [BCPd, MS CM 126, I, 437; 441. Letters from Giacomo to Bernardo Nani (20 and 25 August 1755)]	Gytheion	Unknown
55	57	<i>IG V, 1, 1169</i>	Honorific	Statue base	Sent to Venice in 1754 [BCPd, MS CM 126 I, 353-354; 360-361. Letters from Giacomo to Bernardo Nani (Corfu, 1 September and 28 November 1754)]	Gytheion	Unknown
56	56	<i>IG V, 1, 1178</i>	Honorific	Statue base	Purchased in Marathonisi (Gytheio) by Giacomo Nani in 1753 [BCPd, MS CM 126, I, 222; 258-259. Letters from Giacomo to Bernardo Nani (beginning of 1753 and Acque della Morea, 16 July 1753)]	Gytheion	Piazzola sul Brenta, Villa Contarini (inv. 2)
57	28	<i>IG V, 1, 1179</i>	Honorific	Stele		Gytheion	Unknown
58	43	<i>IG V, 1, 1346</i>	Honorific	Stele		Lakonia	Unknown
59	34	A) <i>IG IV, 702</i> B) <i>IG IV, 721</i> C) <i>IG IV, 722</i>	A) Honorific B) Epitaph C) Epitaph	Statue base	Sent to Venice in 1697 by Antonio Nani	Hermione	Unknown
60	29	<i>IG IV, 565</i>	Dedication	Bronze statuette	Already known by S. Maffei in 1732 (Maffei 1732: 481)	Argos	Saint Petersburg, The State Hermitage Museum (inv. B616)
61	55	A) <i>IG IV<sup>2</sup>, 1, 687</i> B) <i>IG IV<sup>2</sup>, 1, 692</i>	A) Honorific B) Honorific	Statue base	Purchased in 1705 by Antonio Nani	Epidauros	Unknown
62	36	<i>CIG II, 1561</i>	Dedication	Column	Sent from the western coast of Peloponnesus	Peloponnesus	Unknown
<i>ATHENS</i>							
63	1	<i>IG II/III<sup>2</sup>, 1012</i>	Decree	Stele	First published in 1752 (Corsini 1752: 37-47 No. IX, after some notes owned by S. Maffei)	Athens	Piazzola sul Brenta, Villa Contarini (inv. 15)



No.	Collezione 1815	EDITIONS	TYPE OF INSCRIPTION	TYPE OF MONUMENT	ACQUISITION HISTORY	PROVENANCE	PRESENT LOCATION
64	19	IG II/III <sup>3</sup> , 312a Cf. Cavalier 1996c: 140-141 No. 1	Proxeny decree	Stele	Sent to Venice in 1760	Athens	Avignon, Musée Calvet (inv. E 28)
65	22	IG II <sup>2</sup> , 2934	Dedication	Stele	Found in Athens, "in stadio Panathenaico", in 1759	Athens	Berlin, Staatliche Museen zu Berlin, Antikensammlung (inv. 709)
66	23	IG II <sup>2</sup> , 4647	Dedication	Stele	Found in Athens, "in colle Nimpharum"	Athens	Avignon, Musée Calvet (inv. E 19)
67	172	IG II <sup>2</sup> , 9876	Epitaph	Stele	In Mantua, "in area Episcopali", at the beginning of the 17 <sup>th</sup> century (Gruterus). Donated to the Nani family by Giannagostino Gradenigo in 1768 (Favaretto 1986: 602-603)	Athens	Berlin, Staatliche Museen zu Berlin, Antikensammlung (inv. 765)
AEGEAN ISLANDS							
68	100	IG XII, 5, 86; Cavalier 1996c: 99-100 No. 7	Epitaph	Stele	In 1445 seen by Ciriaco d'Ancona in Naxos. Sent to Venice from Constantinople by the ambassador Antonio Donà in 1759 (Favaretto 1986: 606)	Naxos	Avignon, Musée Calvet (inv. E 8)
69	97	CIG II, 1942; Cavalier 1996c: 134-134 No. 22	Epitaph	Stele		Paros	Avignon, Musée Calvet (inv. E 6)
70	173	CIG II, 1940	Honorific	Marble slab	Found by Giacomo Nani in Milos in 1754, stuck in the wall of a church, and sent to Venice the following year [BCPd, MS CM 126, I, 382, 385. Letter from Giacomo to Bernardo Nani (Corfu, 13 July 1754)]	Melos	Piazzola sul Brenta, Villa Contarini (inv. 8)
71	6	IG XII, 3, 1075	Dedication	Column (statue base?)	Seen in Milos by the Jesuit fathers Sarrabat and de Caylus in 1735 (Brucker 1905: 65-70). Recovered by Giacomo Nani in 1754 in a churchyard and then sent to Venice [BCPd, MS CM 126, I, 372, 374-375; 376, 382-383. Letters from Giacomo to Bernardo Nani. (Milos, Ship Speranza, 3 November 1754; Smyrna, 28 November 1754; Corfu, 13 July 1754)]	Melos	Berlin, Staatliche Museen zu Berlin, Antikensammlung (inv. 1485)
72	67	CIG IV, 7009 Ritti 1981: 170 No. 104.	Epitaph	Stele		Rheneia?	Verona, Museo Lapidario Maffei
73	82	CIG IV, 6977 Cavalier 1996c: 94-95 No. 5	Epitaph	Stele	In Padua, "in aedibus Zonagae", in the second half of the 17 <sup>th</sup> century (Reinesius)	Rheneia?	Avignon, Musée Calvet, (inv. E 11)
74	68	CIG IV, 6964 Cavalier 1996c: 97-99 No. 6	Epitaph	Stele	Seen by J. Spon in Venice in 1675	Rheneia?	Avignon, Musée Calvet (inv. E 9)
75	88	CIG IV, 6979 Cavalier 1996c: 133- 134 No. 21	Epitaph	Stele		Rheneia	Avignon, Musée Calvet (inv. E 13)
76	79	CIG IV, 7016 Cavalier 1996c: 107- 109 No. 10	Epitaph	Stele		Rheneia	Avignon, Musée Calvet (inv. E 5)
77	106	CIG IV, 6945 Cavalier 1996c: 100- 102 No. 8	Epitaph	Stele		Cyclades	Avignon, Musée Calvet (inv. E 12)
78	176	Lombardi 1992-1993	Dedication	Stele		Aegean Islands	Roma, Museo Nazionale Romano (inv. 40607)

No.	Collezione 1815	EDITIONS	TYPE OF INSCRIPTION	TYPE OF MONUMENT	ACQUISITION HISTORY	PROVENANCE	PRESENT LOCATION
ASIA MINOR							
79	81	<i>CIG</i> IV, 6984 Cavalier 1996c: 113-116 No. 13	Epitaph	Stele		Smyrna	Avignon, Musée Calvet (inv. E 10)
80	80	<i>CIG</i> IV, 6926 Cavalier 1996c: 110-113 No. 12	Epitaph	Stele		Asia Minor	Avignon, Musée Calvet (inv. E 4)
81	110	<i>CIG</i> IV, 6967 Cavalier 1996c: 120-122 No. 16	Epitaph	Stele	Sent to Venice from Constantinople by the ambassador Antonio Donà in 1759 (Favaretto 1986: 606)	Asia Minor (Kyzikos?)	Avignon, Musée Calvet (inv. E 2)
MACEDONIA AND THRACE							
82		Passeri 1759: XXV-XXVI No. XI	Honorific	Stele		Thessalonike	Unknown
83	391	<i>IG</i> X, 2, 1, 440 <i>RIChrM</i> , 119	Epitaph	Slab	Found in 1754 and sent to Venice the following year [BCPd, MS CM 126, I, 382, 385 (Corfu, 13 July 1754)]	Thessalonike	Roma, Vatican City. Collegio teutonico
84	157	<i>IG</i> X, 2, 1, 517, cf. Daux 1973, 591	Epitaph	Stele	Found in Thessaloniki in 1755	Thessalonike	Unknown
85	99	<i>Perinthos-Herakleia</i> , 145	Epitaph	Stele	Sent to Venice from Constantinople by the ambassador Antonio Donà in 1759 (Favaretto 1986: 606)	Perinthos	Avignon, Musée Calvet (inv. E 18)
UNKNOWN PROVENANCE							
86	174	<i>CIG</i> II, 1943	Decree	Stele			Unknown
87	13	<i>CIG</i> II, 1950	Dedication	Altar			Unknown
88	-	<i>CIG</i> II, 1945	Dedication	Male head			Unknown
89	98	<i>CIG</i> II, 3784 Lombardi 1980: 186-187 No. 6	Epitaph	Stele			Roma, Museo Nazionale Romano (inv. 40598)
90	108	<i>CIG</i> IV, 6952	Epitaph	Marble slab			Piazzola sul Brenta, Villa Contarini (inv. 4)
91	94	<i>CIG</i> IV, 7005	Epitaph	Stele			Unknown
92	92	<i>CIG</i> IV, 7024	Epitaph	Stele			Unknown
93	109	<i>CIG</i> IV, 7028b	Epitaph	Stele			Unknown
94	-	Passeri 1759: XXIV No. X	Epitaph?	Stele			Unknown
95	349	<i>IG</i> II <sup>2</sup> , 1922 Cf. Walters 1899, No. 2998; Kroll 1972: 252, Note 41	Weight	Bronze weight	First published in <i>Memorie per servire all'istoria letteraria</i> , XII, 1758, 219-220		London, British Museum (inv. 1867.0508.249)

5. LATIN INSCRIPTIONS FROM GREECE  
AND DALMATIA [L.C., F.L.]

According to our current records, the Nani Museum included a total of 109 Latin inscriptions, which were found or acquired from a wide range of locations: only 38 of them came from Italy (25 from Rome<sup>8</sup>, 13 from Cisalpine Gaul<sup>9</sup>), while all the others originated from the ancient Roman provinces of *Achaia* (southern continental Greece, including Peloponnesus and the Ionian Islands) and *Dalmatia* (mainly corresponding to the coastal regions of Croatia and Montenegro). In particular, 5 Latin inscriptions came from Greece, specifically from the territories of *Patrae* (1), *Leucas* (1), *Corcyra* (2), and *Kephallenia* (1); two of these epigraphic documents are bilingual Greek-Latin. At least 48 Latin inscriptions came from Dalmatia, in particular from the cities of *Salona* (18) and *Narona* (16), but also from *Scardona* (5), *Aenona* (2), *Acruvium* (1), *Iader* (1), and from the islands of *Arba* (3) and *Brattia* (2). There were also 15 more inscriptions of uncertain geographic origin, which were included by Theodor Mommsen in a specific section of the third volume of the *CIL*, called *Dalmaticae incertae*<sup>10</sup>. Future research on unpublished documents may allow us to identify the origin of some of these inscriptions. The Nani Museum also included 3 inscribed bronze objects, which Mommsen reputed to be of Dalmatian origin, but whose exact findspot is unknown. Finally, the Nani owned a group of at least 22 *inscriptiones falsae*, which included both forgeries and modern copies of ancient epigraphic texts<sup>11</sup>.

<sup>8</sup> *CIL* VI 4317, cf. p. 3414 = 33069a; 10625; 10821; 11071; 11922; 11992; 12228; 12415; 12684; 13242/3; 14572; 16225; 16750; 18625; 18774; 19308; 20673; 22098 = Pais *SupplIt* 639; 22765, cf. *CIL* XI 108\*, 3; 24881; 26564; 27245; 27837; *ICUR* n.s. 3437 = *ILCV* 4571. To this group one must add *CIL* V 1115, because it very likely comes from Rome: cf. Sinn 1987: 119, No. 110; Gascou, Guyon 2005: 270-271, No. 227.

<sup>9</sup> *CIL* V 753, cf. p. 1024 (*Aquileia*); *CIL* V 1930 (*Iulia Concordia*); *CIL* V 2188 (*Altinum*); *CIL* V 2232 (*Altinum*); *CIL* V 2446 (*Rovigo*); *CIL* V 2496, cf. *SupplIt* 15, 1997, p. 58 (*Ateste*); *CIL* V 2553, cf. *SupplIt* 15, 1997, p. 77 (*Ateste*); Conze 1891, 326, No. 841, cf. Schmidt 2013, 312-313, No. 7 (*Patavium?*); *CIL* V 3929, cf. p. 1077, *SupplIt* 26, 2012, p. 232 (*Verona*). In the Nani Museum there were also 4 *instrumentum domesticum* inscriptions that Mommsen attributed to Cisalpine Gaul: *CIL* V 8112, 132; 8114, 30i; 8114, 81c; 8123, 10.

<sup>10</sup> *CIL* III, p. 276: *Denique cum longe plerosque eius musei titulos Latinos deprehendissem oriundos esse ex Dalmatia, quindecim eos, quorum de origine praeterea non constat, referre placuit inter Dalmaticos incertos, cum praesertim ipsa eorum natura plerumque cum hac origine optime conveniret nec adeo paucos eius musei titulos sine ulla originis nota ab auctoribus Naniis relatos deprehendissem descriptos in Dalmatia ab aliis, antequam Nani iussu inde auferrentur.*

<sup>11</sup> 20 of these inscriptions are registered in *CIL* V 1105\*, 1-20; see also Gregori 1991. In the Nani Museum there were also *CIL* V 11\* and a copy of *CIL* VI 9018, now at Piazzola sul Brenta: see Lonardi 2007: 370-372.

This section offers for the first time a complete census of all the Latin and bilingual inscriptions from Greece (5) and Dalmatia (66), which were once part of the Nani Museum, for a total of 71 inscribed objects. The following list indicates for each inscription its main editions, some basic information on the epigraphic text and the inscribed monument, and, especially, an overview of the steps that brought each piece from its findspot to its current location, if known. All data are presented following the geographic order of the third volume of the *CIL*.

Our research has produced some significant advances: in particular, we have provided 3 new concordances that had not been detected so far<sup>12</sup>. The biggest challenge was to trace the current location of these 71 inscriptions. While Mommsen and his collaborators had inspected 51 of them, at the moment only 41 can be located with certainty: 24 are in the Villa Contarini at Piazzola sul Brenta near Padua and 11 in the Museo Nazionale Romano in Rome<sup>13</sup>. The 6 remaining are in Avignon (2), Belluno (1), Paris (1), Venice (1), and Vicenza (1). The quest for all the other missing inscriptions is ongoing.

<sup>12</sup> *CIL* III 3218, 1 = *CIL* V 8123, 8; *CIL* III 1883 = *CIL* III 3180a; *CIL* III 3181 = AE 1998, 244.

<sup>13</sup> We are grateful to Claudio Noviello for sharing this information with us.

No.	Collezione 1815	EDITIONS	TYPE OF INSCRIPTION	TYPE OF MONUMENT	FINDSPOT OR PLACE OF FIRST DOCUMENTATION	DATE OF ACQUISITION	LATER TRANSFERS OUTSIDE VENICE	PRESENT LOCATION
<i>ACHAIA</i>								
<i>PATRAE</i>								
1	35	<i>CIL</i> III 501, cf. p. 984 = <i>CIL</i> III 7269	Honorific (to the Emperor Hadrian)	Base of statue (in two fragments)	Patras	1706	Legnaro	Piazzola sul Brenta, Villa Contarini (inv. 29)
<i>LEVCAS</i>								
2	63	<i>CIL</i> III 574, cf. p. 989, 1320 = <i>IG</i> IX, 1 <sup>2</sup> , 4, 1451	Epitaph (Latin/Greek)	Stele	Leukas	Unknown	Legnaro	Piazzola sul Brenta, Villa Contarini (inv. 13)
<i>CORCYRA</i>								
3	3	<i>CIL</i> III 576, cf. p. 989, 1320 = <i>IG</i> IX, 1 <sup>2</sup> , 4, 842	Sacred	Base	Corfu	1758	Legnaro	Unknown
4	4	<i>CIL</i> III 577, cf. p. 989, 1320 = <i>IG</i> IX, 1, 4, 843	Sacred	Base	Corfu	1758	Legnaro	Unknown
<i>KEPHALLENIA</i>								
5	112	<i>AE</i> 1984, 109 = <i>IG</i> IX, 1 <sup>2</sup> , 4, 1572	A) Epitaph (Greek) B) Epitaph (Latin)	Slab	Kephalonia	Unknown	Unknown	Roma, Museo Nazionale Romano (inv. 40608)
<i>DALMATIA</i>								
<i>ACRVVIVM</i>								
1	143	<i>CIL</i> III 1710, cf. p. 1028	Epitaph	Altar	Kotor, "Trovata negli scavi presso la porta Gordicchio" ( <i>CIL</i> III 1710)	1752	Legnaro	Unknown
<i>NARONA</i>								
2	30	<i>CIL</i> III 1775; <i>ILS</i> 7168. Cf. Caprino 1967: 148	Sacred	Statue base	Vid	1759	Legnaro, Roma	Roma, Museo Nazionale Romano (inv. 30523)
3	5	<i>CIL</i> III 1778	Sacred	Altar	Vid	1758	Unknown	Unknown

No.	Collezione 1815	EDITIONS	TYPE OF INSCRIPTION	TYPE OF MONUMENT	FINDSPOT OR PLACE OF FIRST DOCUMENTATION	DATE OF ACQUISITION	LATER TRANSFERS OUTSIDE VENICE	PRESENT LOCATION
4	65	<i>CIL</i> III 1784 = <i>CIL</i> I <sup>2</sup> 2289, cf. p. 1112; <i>ILS</i> 3354; <i>ILLRP</i> 206, cf. p. 382. Cf. Caprino 1967: 148; Jadrić 2008: 131, note 30 (= AE 2008, 1030)	Sacred	Altar?	Vid	1759	Legnaro, Roma	Roma, Museo Nazionale Romano (inv. 30528)
5	10	<i>CIL</i> III 1792. Cf. <i>Guida</i> 1926: 72, No. 58; Agostinetti 1980: 189, No. 29	Sacred	Altar	Vid	1759	Legnaro, Piazzola sul Brenta	Piazzola sul Brenta, Villa Contarini (inv. 30)
6	11	<i>CIL</i> III 1793. Cf. AMCPd, 1899, prot. No. 252, Belluno, No. 14; <i>Guida</i> 1926: 71, No. 56; Agostinetti 1980: 189, No. 27	Sacred	Altar	Vid	Unknown	Legnaro, Belluno, Piazzola sul Brenta	Piazzola sul Brenta, Villa Contarini (inv. 28)
7	24	<i>CIL</i> III 1795 = <i>CIL</i> XII 133 <sup>3</sup> , 3; <i>CIL</i> III 8419; Gascou, Guyon 2005: 267-268, No. 224	Sacred	Relief	Vid	Unknown	Avignon	Avignon, Musée Calvet (inv. F 202)
8	48	<i>CIL</i> III 1798. Cf. <i>Guida</i> 1926: 69, No. 49; Agostinetti 1980: 189, No. 25	Honorific	Statue base	Vid	Unknown	Legnaro, Piazzola sul Brenta	Piazzola sul Brenta, Villa Contarini (inv. 40)
9	45	<i>CIL</i> III 1800. Cf. <i>Guida</i> 1926: 69, No. 50; Agostinetti 1980: 189, No. 26	Honorific	Statue base	Vid	1759	Legnaro, Piazzola sul Brenta	Piazzola sul Brenta, Villa Contarini (inv. 22)
10	27	<i>CIL</i> III 1803, cf. p. 1029 = <i>CIL</i> III 8429	Sacred	Altar	Makarska, "Prope Macarscam nuper reperta" ( <i>CIL</i> III 1803)	1758	Legnaro	Unknown
11	178	<i>CIL</i> III 1806 = <i>CIL</i> III 8422. Cf. ASVe, Archivio privato Tiepolo, primo versamento, busta 108: f. 1r (unnumbered)	Building	Slab	Vid	1759	Unknown	Unknown
12	179	<i>CIL</i> III 1821 = <i>CIL</i> I <sup>2</sup> 2292, cf. p. 1113. Cf. ASVe, Archivio privato Tiepolo, primo versamento, busta 108: f. 1r (unnumbered)	Building	Slab	Vid	1759	Unknown	Unknown

No.	Collezione 1815	EDITIONS	TYPE OF INSCRIPTION	TYPE OF MONUMENT	FINDSPOT OR PLACE OF FIRST DOCUMENTATION	DATE OF ACQUISITION	LATER TRANSFERS OUTSIDE VENICE	PRESENT LOCATION
13	46	<i>CIL</i> III 1833. Cf. <i>Guida</i> 1926: 76, No. 76; Agostinetti 1980: 189, No. 31	Epitaph	Altar	Vid, "Trovata nel pendio di una collina vicino al fiume Narenta" ( <i>CIL</i> III 1833)	1759	Legnaro, Piazzola sul Brenta	Piazzola sul Brenta, Villa Contarini (inv. 37)
14	164	<i>CIL</i> III 1843 = <i>CIL</i> III 8424. Cf. ASVe, Archivio privato Tiepolo, primo versamento, busta 108: f. 1r (unnumbered)	Epitaph?	Slab?	Vid	1758	Unknown	Unknown
15	135	<i>CIL</i> III 1881. Cf. <i>Guida</i> 1926: 80, No. 93; Agostinetti 1980: 190, No. 40	Epitaph	Stele	Vid	1753	Legnaro, Piazzola sul Brenta	Piazzola sul Brenta, Villa Contarini (inv. 25)
16	409	<i>CIL</i> III 1883 = <i>CIL</i> III 3180a. Cf. <i>Guida</i> 1926: 75, No. 72	Epitaph	Stele	Vid	1759	Legnaro, Piazzola sul Brenta	Unknown
17	7	<i>CIL</i> III 3158b, cf. p. 1038. Cf. <i>Guida</i> 1926: 67-68, No. 45; Agostinetti 1980: 189, No. 23	Sacred	Altar	Vid?, "Collato titulo similimo n. 1783 probabile est hunc quoque origine Naronensem esse" ( <i>CIL</i> III, p. 1038)	Unknown	Legnaro, Piazzola sul Brenta	Piazzola sul Brenta, Villa Contarini (inv. 16)
SALONA								
18	39	<i>CIL</i> III 1974, cf. <i>CIL</i> XII 133*, 3 = <i>CIL</i> III 8569; Gascou, Guyon 2005: 268-269, No. 225	Sacred	Relief	Solin, "Salonis apud comitem Geremia" ( <i>CIL</i> III 1974)	1761	Avignon	Avignon, Musée Calvet (inv. F 203)
19	53	<i>CIL</i> III 2055. Cf. Caprino 1967: 148	Epitaph	Stele	Solin	1757	Legnaro, Roma	Roma, Museo Nazionale Romano (inv. 39262)
20	52	<i>CIL</i> V 2164 = <i>CIL</i> III 2062; Fasolo 1940: 25, No. 86 (fr. a); <i>CIL</i> III 2069 = <i>CIL</i> III 8747 (fr. b); <i>ILJug</i> III 2098 (fr. a+b)	Epitaph	Altar	Solin	1757 (fr. a)	Vicenza (fr. a)	Vicenza, Musei Civici (inv. EI 86) (fr. a); Solin (fr. b)
21	47	<i>CIL</i> III 2114, cf. p. 1509	Epitaph	Stele	Solin	1761	Legnaro, Roma	Roma, Museo Nazionale Romano (inv. 30521)
22	118	<i>CIL</i> III 2149 = <i>CIL</i> III 8600	Epitaph	Stele	Solin	1759	Legnaro	Unknown

No.	Collezione 1815	EDITIONS	TYPE OF INSCRIPTION	TYPE OF MONUMENT	FINDSPOT OR PLACE OF FIRST DOCUMENTATION	DATE OF ACQUISITION	LATER TRANSFERS OUTSIDE VENICE	PRESENT LOCATION
23	127	<i>CIL</i> III 2151. Cf. <i>Guida</i> 1926: 77-78, No. 84; Agostinetti 1980: 190, No. 34	Epitaph	Stele	Solin	1757	Legnaro, Piazzola sul Brenta	Piazzola sul Brenta, Villa Contarini (inv. 43)
24	121	<i>CIL</i> III 2152, cf. pp. 1031, 2328.125	Epitaph	Altar	Solin	1757	Legnaro	Unknown
25	161	<i>CIL</i> III 2161, cf. p. 1031. Cf. Solin 1993: 102	Epitaph	Stele	Solin, "Rep. 1732 prope moenia Salonarum ab aquilone in quadam vinea familiae Dumaneo Rota" ( <i>CIL</i> III, p. 1031)	1752	Legnaro, Roma	Roma, Palazzo Primoli
26	144	<i>CIL</i> III 2234, cf. p. 1509. Cf. <i>Guida</i> 1926: 77, No. 82; Agostinetti 1980: 190, No. 33	Epitaph	Stele	Split, "Spalatro andando dalla piazza al duomo" ( <i>CIL</i> III, p. 1509)	Unknown	Legnaro, Piazzola sul Brenta	Piazzola sul Brenta, Villa Contarini (inv. 39)
27	117	<i>CIL</i> III 2275	Epitaph	Stele	Solin	1757	Legnaro	Unknown
28	147	<i>CIL</i> III 2302. Cf. <i>Guida</i> 1926: 78, No. 86; Agostinetti 1980: 190, No. 35	Epitaph	Stele	Split, "Spalati apud comites Geremia" ( <i>CIL</i> III 2302)	Unknown	Legnaro, Piazzola sul Brenta	Piazzola sul Brenta, Villa Contarini (inv. 41)
29	116	<i>CIL</i> III 2448	Epitaph	Slab?	Solin	1757	Legnaro	Unknown
30	158	<i>CIL</i> III 2496	Epitaph	Slab?	Lučac, "In Spalatensi suburbio Luzaz ante atrium domus Francisci Bolis" ( <i>CIL</i> III 2496)	Unknown	Unknown	Unknown
31	128	<i>CIL</i> III 2526. Cf. <i>Guida</i> 1926: 79, No. 90; Agostinetti 1980: 190, No. 38	Epitaph	Stele	Solin	1757	Legnaro, Piazzola sul Brenta	Piazzola sul Brenta, Villa Contarini (inv. 20)
32	141	<i>CIL</i> III 2541, cf. p. 1510	Epitaph	Stele	Vranjic, "Vragniz in domo Antonii Klacovich" ( <i>CIL</i> III, p. 1510)	1761	Unknown	Unknown
33	148	<i>CIL</i> III 2639, cf. p. 1032. Cf. <i>Guida</i> 1926: 76, No. 79; Agostinetti 1980: 189, No. 32	Epitaph	Stele	Solin	1761	Legnaro, Piazzola sul Brenta	Piazzola sul Brenta, Villa Contarini (inv. 38)
34	146	<i>CIL</i> III 3173 = <i>CIL</i> III 8877	Epitaph	Stele?	Solin, "In loco qui dicitur Jezerne, in terra aratoria Petri Guinov" ( <i>CIL</i> III 8877)	Unknown	Venezia	Venezia, Seminario Patriarcale

No.	Collezione 1815	EDITIONS	TYPE OF INSCRIPTION	TYPE OF MONUMENT	FINDSPOT OR PLACE OF FIRST DOCUMENTATION	DATE OF ACQUISITION	LATER TRANSFERS OUTSIDE VENICE	PRESENT LOCATION
35	165	<i>CIL</i> III 3179 = <i>CIL</i> III 9086. Cf. AMCPd, 1899, prot. No. 252, Belluno, No. 13; <i>Guida</i> 1926: 81-82, No. 102; Agostinetti 1980: 191, No. 43	Epitaph	Stele	Lučac, "In suburbio Luciaz in pariete domus DD. fratrum Bolis" ( <i>CIL</i> III 9086)	Unknown	Legnaro, Belluno, Piazzola sul Brenta	Piazzola sul Brenta, Villa Contarini (inv. 31)
SCARDONA								
36	20	<i>CIL</i> III 2805	Sacred	Altar	Skradin, "Basis reperta una cum statua sua Scardonae ad oppidi quod nunc est limitem" ( <i>CIL</i> III 2805)	Immediately after 1755	Unknown	Unknown
37	26	<i>CIL</i> III 2806	Sacred	Altar	Skradin	1759	Unknown	Unknown
38	66	<i>CIL</i> III 2811, cf. p. 1035. Cf. Caprino 1967: 148	Building	Slab?	Skradin	Unknown	Legnaro, Roma	Roma, Museo Nazionale Romano (inv. 30529)
39	126	<i>CIL</i> III 2812. Cf. ASVe, Archivio privato Tiepolo, primo versamento, busta 108: f. 1r (unnumbered)	Epitaph	Stele	Skradin	1756	Unknown	Unknown
40	150	<i>CIL</i> III 2814. Cf. ASVe, Archivio privato Tiepolo, primo versamento, busta 108: f. 1r (unnumbered)	Epitaph	Stele	"Sine loco, sed post Asseriatas, ante Scardonitanas" ( <i>CIL</i> III 2814)	Unknown	Unknown	Unknown
IADER								
41	49	<i>CIL</i> III 2911. Cf. <i>Guida</i> 1926: 80, No. 95; Agostinetti 1980: 190, No. 41	Epitaph	Slab	Zadar, "Iader in aede S. Petri ad forum" ( <i>CIL</i> III 2911)	Unknown	Legnaro, Piazzola sul Brenta	Piazzola sul Brenta, Villa Contarini (inv. 34)
AENONA								
42	12	<i>CIL</i> III 2970. Cf. Caprino 1967: 148; Veyne 1987 (= AE 1988, 921)	Sacred	Altar	Nin	1759	Legnaro, Roma	Roma, Museo Nazionale Romano (inv. 30527)
43	136	<i>CIL</i> III 2982, cf. p. 1037	Epitaph	Unknown	Nin	1759	Legnaro	Unknown



No.	Collezione 1815	EDITIONS	TYPE OF INSCRIPTION	TYPE OF MONUMENT	FINDSPOT OR PLACE OF FIRST DOCUMENTATION	DATE OF ACQUISITION	LATER TRANSFERS OUTSIDE VENICE	PRESENT LOCATION
<i>BRATTIA</i>								
44	25	<i>CIL</i> III 3096, cf. p. 1038. Cf. <i>Guida</i> 1926: 67, No. 44; Agostinetti 1980: 189, No. 22	Sacred	Altar	Brač, Škrip, " <i>In insula Brachiae prope vicum Scrip, supra fontem lapis suprapositus rupi, ex qua fons scaturrit</i> " ( <i>CIL</i> III 3096)	Unknown	Legnaro, Piazzola sul Brenta	Piazzola sul Brenta, Villa Contarini (inv. 23)
45	119	<i>CIL</i> III 3107; <i>ILS</i> 8517; <i>ILCV</i> 4360; Luciani 2013: 300 No. 3. Cf. AMCPd, 1899, prot. No. 252, Belluno, No. 39	Epitaph	Stele	Brač, Postira, " <i>Postirae in insula Brazza</i> " ( <i>CIL</i> III 3107)	Unknown	Legnaro, Belluno	Belluno, Museo Civico (inv. 21)
<i>ARBA</i>								
46	42	<i>CIL</i> III 3116; <i>ILS</i> 3869	Sacred/Building	Base	Rab, " <i>Arbae in monte Cocossizae rep.</i> " ( <i>CIL</i> III 3116)	Unknown	Legnaro	Unknown
47	37	<i>CIL</i> III 3118. Cf. <i>Guida</i> 1926: 71, No. 55; Agostinetti 1980: 191, No. 47	Honorific	Statue Base	Rab, " <i>Arbae in turri S. Stephani, quae est dominorum de Galzigna</i> " ( <i>CIL</i> III 3118)	1753	Legnaro, Piazzola sul Brenta	Piazzola sul Brenta, Villa Contarini (inv. 33)
48	38	<i>CIL</i> III 3119. Cf. <i>Guida</i> 1926: 69-70, No. 52; Agostinetti 1980: 191, No. 48	Honorific	Statue Base?	Rab, " <i>Arbae in aedibus Matthaei Galzigna</i> " ( <i>CIL</i> III 3119)	1752	Legnaro, Piazzola sul Brenta	Piazzola sul Brenta, Villa Contarini (inv. 32)
<i>DALMATICAЕ INCERTAE</i>								
49	21	<i>CIL</i> III 3160	Sacred	Base	Unknown	Unknown	Legnaro, Roma	Roma, Museo Nazionale Romano (inv. 30526)
50	41	<i>CIL</i> III 3161; Fitz 1978: 372	Sacred	Base?	" <i>Ex Dalmatia (sic ex ore Nanii)</i> " ( <i>CIL</i> III 3161)	Unknown	Unknown	Unknown
51	31	<i>CIL</i> III 3162. Cf. <i>Guida</i> 1926: 66, No. 40	Sacred	Base	Unknown	Unknown	Legnaro, Piazzola sul Brenta	Unknown
52	51	<i>CIL</i> III 3163. Cf. <i>Guida</i> 1926: 68, No. 46; Agostinetti 1980: 189, No. 24	Boundary	Cippus	Unknown	Unknown	Legnaro, Piazzola sul Brenta	Piazzola sul Brenta, Villa Contarini (inv. 24)
53	180	<i>CIL</i> III 3170. Cf. <i>Guida</i> 1926: 72, No. 59; Agostinetti 1980: 189, No. 30	Honorific?	Slab	Unknown	Unknown	Legnaro, Piazzola sul Brenta	Piazzola sul Brenta, Villa Contarini (inv. 36)

No.	Collezione 1815	EDITIONS	TYPE OF INSCRIPTION	TYPE OF MONUMENT	FINDSPOT OR PLACE OF FIRST DOCUMENTATION	DATE OF ACQUISITION	LATER TRANSFERS OUTSIDE VENICE	PRESENT LOCATION
54	408	<i>CIL</i> III 3171. Cf. AMCPd, 1899, prot. No. 252, Belluno, No. 27; <i>Guida</i> 1926: 78, No. 85	Epitaph	Slab?	Unknown	Unknown	Legnaro, Belluno, Piazzola sul Brenta	Unknown
55	149	<i>CIL</i> III 3172	Epitaph	Stele	Unknown	Unknown	Legnaro, Roma	Roma, Museo Nazionale Romano (inv. 30518)
56	151	<i>CIL</i> III 3174 = <i>CIL</i> III 10148. Cf. ASVe, Archivio privato Tiepolo, primo versamento, busta 108: f. 1r (unnumbered)	Epitaph	Sarcophagus	Unknown	Unknown	Unknown	Unknown
57		<i>CIL</i> III 3176	Epitaph	Unknown	Unknown	Unknown	Unknown	Unknown
58	138	<i>CIL</i> III 3180. Cf. AMCPd, 1899, prot. No. 252, Belluno, No. 12; <i>Guida</i> 1926: 81, No. 98; Agostinetti 1980: 190-191, No. 42	Epitaph	Stele	Unknown	1753	Legnaro, Belluno, Piazzola sul Brenta	Piazzola sul Brenta, Villa Contarini (inv. 27)
59	145	<i>CIL</i> III 3181; Panciera 1998: 155, 172, No. 9 (= AE 1998, 244)	Epitaph	Slab	Unknown	Unknown	Legnaro, Roma	Roma, Museo Nazionale Romano (inv. 30516)
60	154	<i>CIL</i> III 3183. Cf. <i>Guida</i> 1926: 78-79, No. 88; Agostinetti 1980: 190, No. 36	Epitaph	Slab	Unknown	Unknown	Legnaro, Piazzola sul Brenta	Piazzola sul Brenta, Villa Contarini (inv. 26)
61	155	<i>CIL</i> III 3185 = <i>CIL</i> III 10151. Cf. ASVe, Archivio privato Tiepolo, primo versamento, busta 108: f. 1r (unnumbered)	Epitaph	Stele	Unknown	Unknown	Unknown	Unknown
62	152	<i>CIL</i> III 3186. Cf. <i>Guida</i> 1926: 82, No. 104; Agostinetti 1980: 191, No. 45	Epitaph	Stele	Unknown	1753	Legnaro, Piazzola sul Brenta	Piazzola sul Brenta, Villa Contarini (inv. 42)
63	142	<i>CIL</i> III 3193	Epitaph	Altar	Unknown	Unknown	Legnaro	Unknown

No.	Collezione 1815	EDITIONS	TYPE OF INSCRIPTION	TYPE OF MONUMENT	FINDSPOT OR PLACE OF FIRST DOCUMENTATION	DATE OF ACQUISITION	LATER TRANSFERS OUTSIDE VENICE	PRESENT LOCATION
<i>INSTRUMENTVM DOMESTICVM</i>								
64	312	<i>CIL</i> III 3218, 1 = <i>CIL</i> V 8123, 8. Cf. Dubois 1841: 129-130, No. 749; <i>Catalogue</i> 1865: 140, No. 782; <i>Collection</i> <i>Hoffmann</i> 1886: 133-135, No, 489; <i>Meyer-Petit</i> 1980: 207, No. 120	<i>Instrumentum domesticum</i>	Bronze vase lid	" <i>Ex Dalmatia</i> " ( <i>CIL</i> III 3218, 1)	Unknown	Paris	Paris, Musée du Petit Palais (inv. Dut. 90)
65	348	<i>CIL</i> III 3218, 2. Cf. Dubois 1841: 130, No. 751, 5; <i>Catalogue</i> 1865: 140, No. 784, 5	<i>Instrumentum domesticum</i>	Bronze stamp	" <i>Ex Dalmatia</i> " ( <i>CIL</i> III 3218, 2)	Unknown	Paris	Unknown
66	348	<i>CIL</i> III 3218, 3 = <i>CIL</i> III 10187, 1. Cf. Dubois 1841: 130, No. 751, 3; <i>Catalogue</i> 1865: 140, No. 784, 3	<i>Instrumentum domesticum</i>	Bronze stamp	" <i>Ex Dalmatia</i> " ( <i>CIL</i> III 3218, 3)	Unknown	Paris	Unknown



Fig. 1. View of the Nani Palace at San Trovaso, Venice (photo: Franco Luciani)

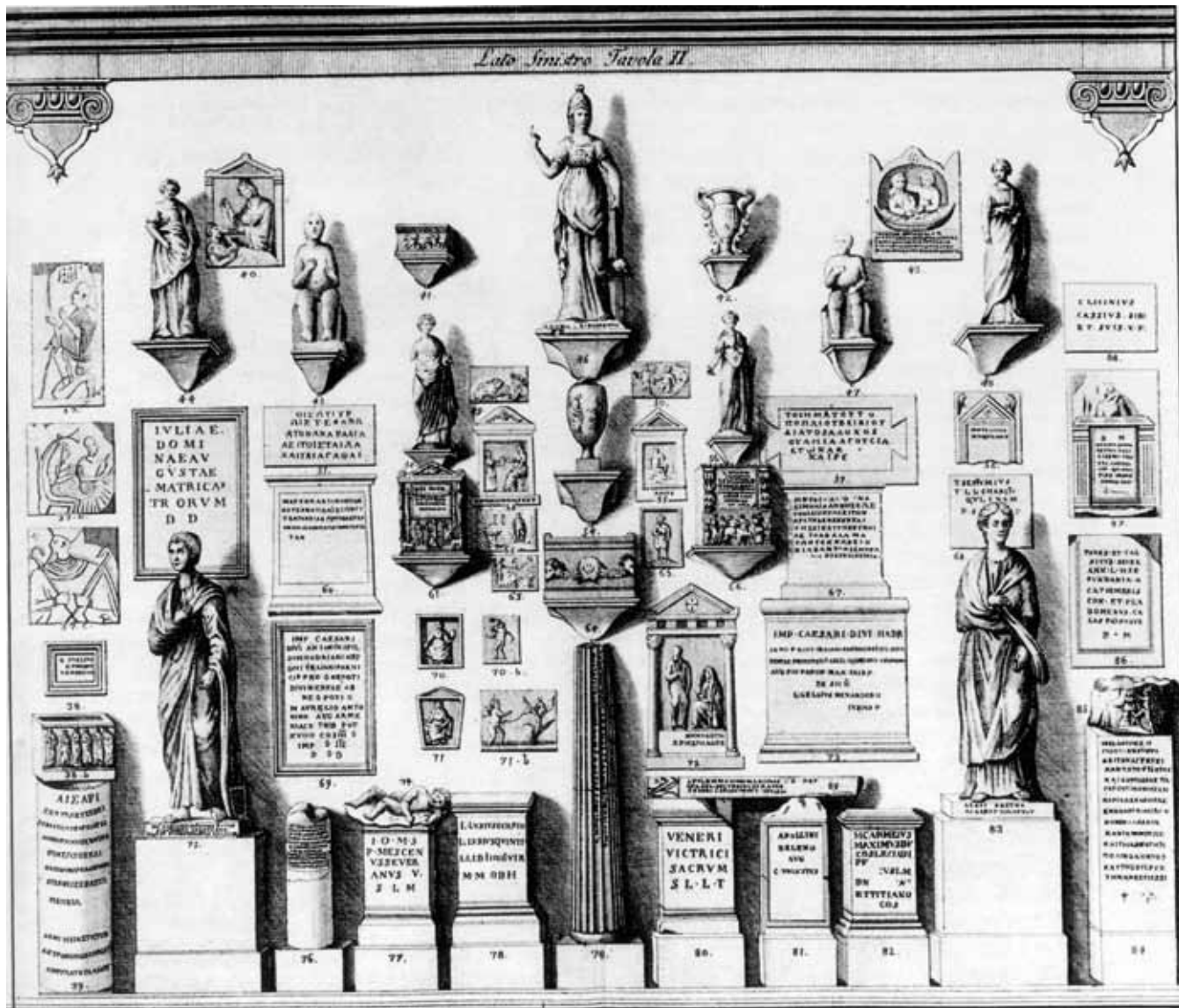


Fig. 2. Drawing of the left wall of the main hall of the Nani Palace at San Trovaso, Venice (*Indici* 1791)

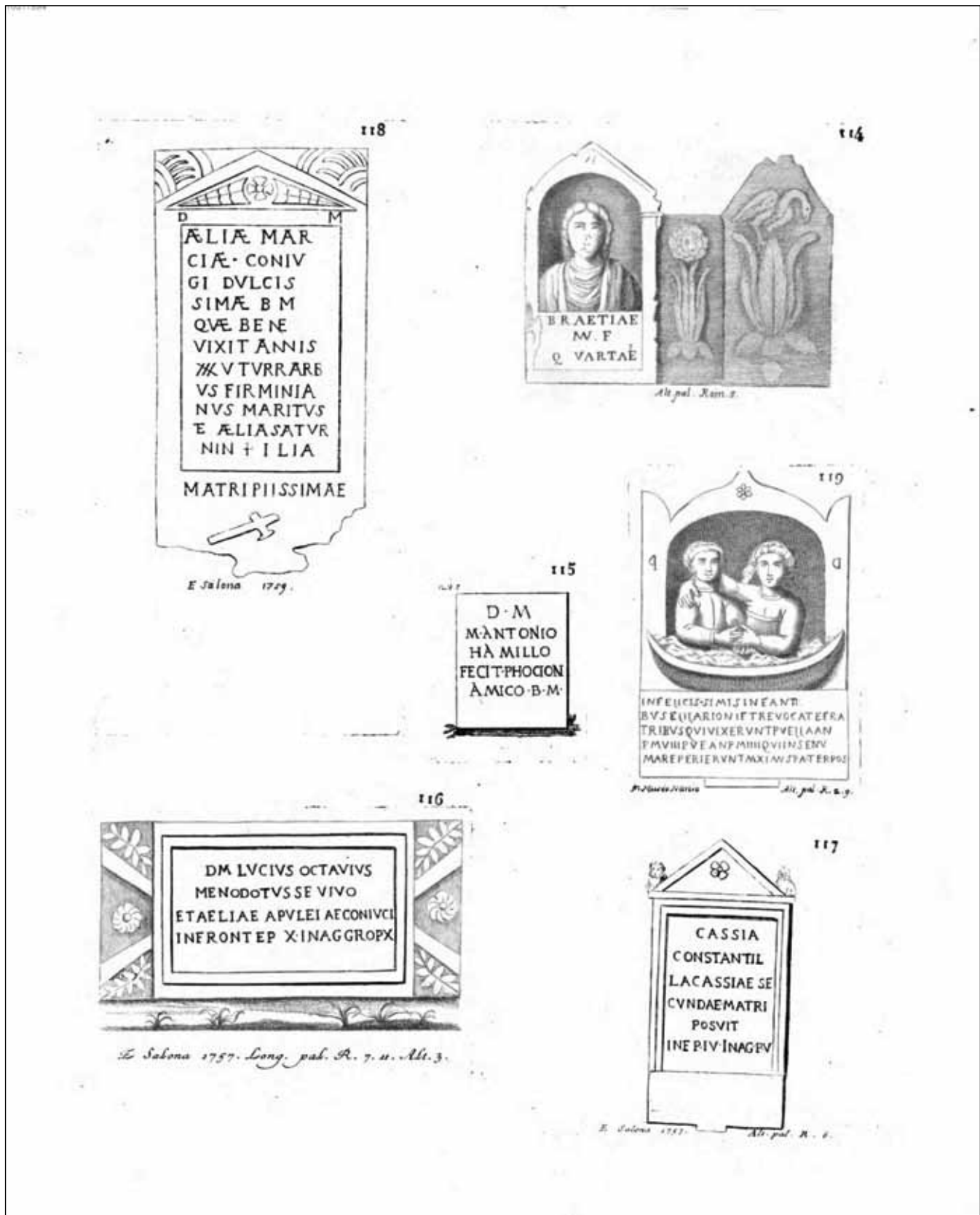


Fig. 3. A page from Francesco Driuzzo's catalogue, reproducing some Latin inscriptions from Dalmatia (*Collezione* 1815: f. 19r)

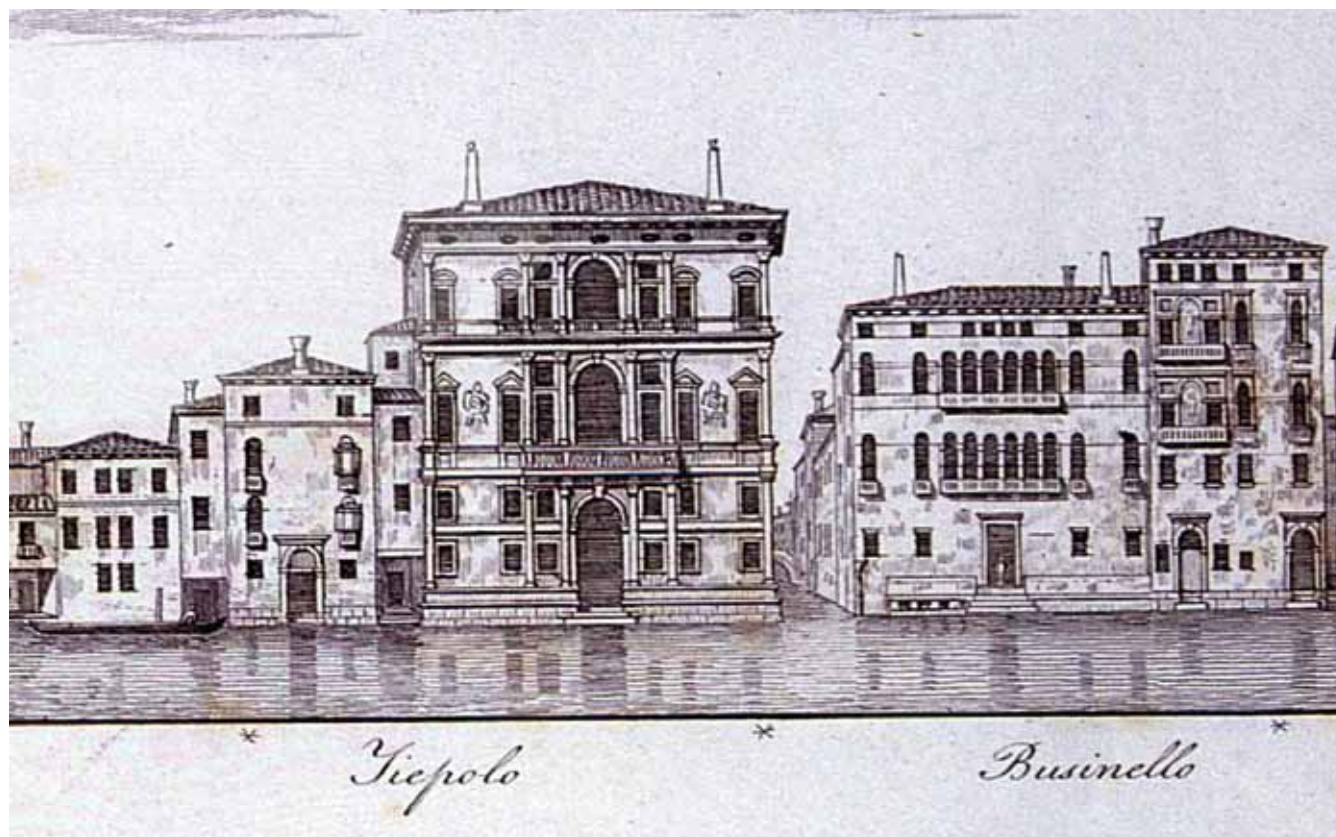


Fig. 4. Drawing of the Tiepolo and Busenello Palaces on the Grand Canal (Quadri 1828: tav. 8)



Fig. 5. View of the Villa Contarini at Piazzola sul Brenta (photo: Francesca Crema)

## SAŽETAK

MUZEJ NANI: GRČKI I LATINSKI NATPISI  
IZ GRČKE I DALMACIJE

Muzej Nani bio je jedan od najznačajnijih privatnih starinarskih kolekcija u Veneciji 18. stoljeća. Sam je muzej najvećim svojim dijelom nastao trudom dvojice braće, Bernarda i Giacoma Nanija, koji su prikupili starine ponajviše na istočnoj obali Jadrana, jonskim otocima, grčkom kopnu i Egejskome moru. Zbirka je imala više od 400 antičkih predmeta, od čega su polovica bili grčki i latinski natpisi. Svi su ovi premeti kasnije bili razasuti na više strana: mnogi su sada u raznim muzejima u Europi i SAD-u, dok se nekolicina predmeta smatra izgubljenima. Ovaj članak donosi kratak pregled povijesti Muzeja Nani, s posebnim osvrtom na njegov epigrafski dio. Također, priložen je i popis svih grčkih i latinskih natpisa iz Grčke i Dalmacije koji su nekoć pripadali Muzeju Nani, a u kojem su navedeni podatci o njihovom podrijetlu, slijedu njihove daljnje disperzije te podatak o njihovoj sadašnjoj lokaciji, ako ju je bilo moguće ustanoviti.

Ključne riječi: epigrafija, grčki natpisi, latinski natpisi, arheologija, Dalmacija, Grčka, jonski otoci, Muzej Nani, privatni muzeji, starinarske zbirke, starinarstvo, Venecija.

## ABBREVIATIONS

AE - L'Année Épigraphique, Paris 1888-

AMCPd - Padua, Biblioteca Civica, Archivio del Museo Civico.

ASVe - Venice, Archivio di Stato.

BCPd - Padua, Biblioteca Civica.

CIG - Corpus inscriptionum Graecarum, I-IV, ed. A. Böckh, Berlin 1828-1856.

CIL - Corpus inscriptionum Latinarum, Berlin 1862-Guillou, RIGMIt - A. Guillou, Recueil des inscriptions grecques médiévales d'Italie (Collection de l'École Française de Rome 222), Rome 1996.

ICUR n.s. - Inscriptiones Christianae urbis Romae. Nova series, Romae 1922-

IG - Inscriptiones Graecae, Berlin 1873-

ILCV - E. Diehl, Inscriptiones Latinae Christianae Veteres, Berlin, Dublin, Zürich 1925-1967.

ILJug III - J. Šašel, A. Šašel, Inscriptiones Latinae quae in Iugoslavia inter annos MCMII et MCMXL repertae et editae sunt, Ljubljana 1986.

I.Bouthrotos - P. Cabanes, F. Drini, Corpus des inscriptions grecques d'Illyrie méridionale et d'Épire, 2.2. Inscriptions de Bouthrôtos (= Études épigraphiques 2), Athens 2007.

ILLRP - A. Degrassi, Inscriptiones Latinae liberae rei publicae, I, Firenze 1957; II, Firenze 1963.

ILS - H. Dessau, Inscriptiones Latinae selectae, Berlin 1892-1916.

Pais SupplIt - E. Pais, Corporis inscriptionum Latinarum Supplementa Italica, consilio et auctoritate Academiae Regiae Lynceorum edita, Fasciculus I. Additamenta ad vol. V Galliae Cisalpinae, Roma 1888.

Perinthos-Herakleia - M.H. Sayar, Perinthos-Herakleia (Marmara Ereğlisi) und Umgebung. Geschichte, Testimonien, griechische und lateinische Inschriften (= Österreichische Akademie der Wissenschaften. Philosophisch-historische Klasse. Denkschriften [DAW] 269), Vienna 1998.

RIChrM - D. Feissel, Recueil des inscriptions chrétiennes de Macédoine du III<sup>e</sup> au VI<sup>e</sup> siècle (= Bulletin de Correspondance Hellénique Supplément 8), Paris 1983.

Samsaris, Nikopolis - K. D. Samsaris, Η Άκτια Νικόπολη και η «Χώρα» της (Νότια Ήπειρος - Ακαρνανία): Ιστορικογεωγραφική και επιγραφική συμβολή, Thessaloniki 1994.

SEG - Supplementum Epigraphicum Graecum, Amsterdam 1923-

SupplIt - Supplementa Italica. Nuova serie, Roma 1981-

## BIBLIOGRAPHY

## Agostinetti 1980

N. Agostinetti, *La raccolta archeologica di Villa Simes di Piazzola sul Brenta (Padova)*, *Archeologia Veneta* 3, 1980, 163-192.

## Ascani, Buzi, Picchi 2015

K. Ascani, P. Buzi, D. Picchi (eds.), *The Forgotten Scholar: Georg Zoëga (1755-1809). At the Dawn of Egyptology and Coptic Studies*, Leiden 2015.

## Aus dem Briefwechsel 1944

*Aus dem Briefwechsel Friedrich Münters. Europäische Beziehungen eines Dänischen Gelehrten 1780-1830*, ed. Ø. Andreasen, I, Copenhagen-Leipzig 1944.

## Basaldella 1996

F. Basaldella, *Di Johannes David Weber e della sua collezione d'arte e antichità (1773-1847)*, Venice 1996.

## Biagi 1785a

C. Biagi, *Tractatus de Decretis Atheniensium in quo illustratur singulare Decretum Atheniense ex Museo Equitis ac Senatoris Iacobi Nanii Veneti*, Rome 1785.

## Boisset 2005

O. Boisset, *Les antiques du comte James Alexandre de Pourtalès-Gorgier: une introduction*, in M. Preti-Hamard, Ph. Sénéchal (eds.), *Collections et marché de l'art en France 1789-1848*, Rennes 2005, 187-206.

## Borean 2009

L. Borean, *Giovanni Domenico Almorò Tiepolo*, in L. Borean, S. Mason (eds.), *Il collezionismo d'arte a Venezia. Il Settecento*, Venice 2009, 310-311.

## Brucker 1905

J. Brucker, *Excursion archéologique de deux Français à Milo, en 1735*, *Études. Revue fondue en 1856 par des pères de la Compagnie de Jésus* 102, 1905, 51-74.

## Calvelli 2012

L. Calvelli, *Il viaggio in Italia di Theodor Mommsen nel 1867*, *MDCCC 1800* 1, 2012, 103-120.

## Caprino 1967

C. Caprino, *La collezione epigrafica del Museo Nazionale Romano. Tavola comparativa*, *Epigraphica* 29, 1967, 145-172.

## Catalogue 1865

*Catalogue des tableaux anciens et modernes dessins qui composent les collections de feu M. le comte de Pourtalès-Gorgier*, Paris 1865.

## Cavalier 1987

O. Cavalier, *Le Musée Nani de Venise*, *Bulletin de Liaison de la Société des Amis de la Bibliothèque Salomon Reinach* 5, 1987, 69-84.

## Cavalier 1992

O. Cavalier, *La collection Nani d'antiquités*, in A.-F. Laurens, K. Pomian (eds.), *L'anticomanie. La collection d'antiquités aux 18e et 19e siècles*, Colloque International (Montpellier-Lattes, 9-12 June 1988), Paris 1992, 73-82.

## Cavalier 1996a

O. Cavalier, *L'arrivée à Avignon d'une partie de la collection Nani*, in *Silence* 1996, 39-43.

## Cavalier 1996b

O. Cavalier, *La collection Nani à l'Epoque Contemporaine*, in *Silence* 1996, 45-49.

## Cavalier 1996c

O. Cavalier, *Catalogue de la sculpture grecque du Musée Calvet*, in *Silence* 1996, 59-178.

## Collection Hoffmann 1886

*Collection H. Hoffmann. Catalogue des objets d'art antiques, terres cuites, bijoux, verrerie, dont la vente aura lieu à l'Hôtel Drouot, Salle N° 5, les mercredi 26 et jeudi 27 mai 1886 à deux heures*, Paris 1886.

## Collezione 1815

[F. Driuzzo], *Collezione di tutte le antichità che si conservano nel Museo naniano di Venezia, divisa per classi e in due parti, aggiuntevi le classi di tutte le medaglie*, Venice 1815.

## Conze 1891

A. Conze, *Königliche Museen zu Berlin. Beschreibung der antiken Skulpturen mit Ausschluss der pergamenischen Fundstücke*, Berlin 1891.

## Crema 2007

F. Crema, *Dalla collezione Nani al Museo Archeologico di Venezia: un chalkoma corcirese di prossenia*, in Cresci Marrone, Pistellato 2007, 237-263.

## Crema 2011

F. Crema, *La Colonna Naniana: Antiquitates e stratificazioni semantiche a Venezia nella seconda metà del Settecento*, in C. Antonetti, G. Masaro, A. Pistellato, L. Toniolo (eds.), *Comunicazione e linguaggio. Contributi della Scuola di Dottorato in Scienze Umanistiche. Indirizzo in Storia antica e Archeologia*, Padua 2011, 257-271.

## Cresci Marrone, Pistellato 2007

G. Cresci Marrone, A. Pistellato (eds.), *Studi in ricordo di Fulviomario Broilo*, Atti del convegno (Venice, 14-15 October 2005), Venice 2007.

## Daux 1973

G. Daux, *Compléments et corrections aux Inscriptions Thessalonicae*, *Bulletin de Correspondance Hellénique* 97, 1973, 585-599.



- De Rossi 1890  
G.B. De Rossi, *Iscrizione cristiana greca di Tessalonica*, *Bullettino di Archeologia Cristiana* 5, 1890, 54-62.
- Del Negro 2012  
P. Del Negro, *Nani, Giacomo*, in *Dizionario Biografico degli Italiani* 77, 2012, 699-703.
- Dubois 1841  
J. J. Dubois, *Description des antiqués faisant partie des Collections de M. le comte de Pourtalès Gorgier*, Paris 1841.
- Fasolo 1940  
G. Fasolo, *Guida del Museo civico di Vicenza*, Vicenza 1940.
- Favaretto 1986  
I. Favaretto, *Le «antichità profane» di Giovanni Grevenbroch: disegni dall'antico nella Venezia del XVIII secolo*, *Aquileia Nostra* 57, 1986, 597-616.
- Favaretto 1991  
I. Favaretto, *Raccolte di antichità a Venezia al tramonto della Serenissima: la collezione dei Nani di San Trovaso*, *Xenia* 21, 1991, 77-92.
- Favaretto 1996  
I. Favaretto, *Présence grecques à Venise au XVIIIe siècle. La collection Nani de San Trovaso*, in *Silence* 1996, 28-38.
- Favaretto 2002  
I. Favaretto, *Arte antica e cultura antiquaria nelle collezioni venete al tempo della Serenissima*, Rome 2002 [2<sup>nd</sup> edition].
- Fischer-Hansen 2009  
T. Fischer-Hansen, *Frederik Münter in Syracuse and Catania in 1786: Antiquarian Legislation and Connoisseurship in 18<sup>th</sup> Century Sicily*, in G. Giarrizzo, S. Pafumi (eds.), *Oggetti, uomini, idee. Percorsi multidisciplinari per la storia del collezionismo*, Atti della tavola rotonda (Catania, 4 December 2006), Pisa-Rome 2009, 117-137.
- Fischer-Hansen 2015  
T. Fischer-Hansen, *Georg Zoëga and Friedrich Münter. The Significance of their Relationship*, in Ascani, Buzi, Picchi 2015, 87-98.
- Fitz 1978  
J. Fitz, *Epigraphica*, IX, *Alba Regia* 16, 1978, 371-372.
- Gascou, Guyon 2005  
J. Gascou, J. Guyon (eds.), *La collection d'inscriptions gallo-grecques et latines du musée Calvet*, Paris 2005.
- Gregori 1991  
G.L. Gregori, *Recupero di CIL V, 215\* a Roma*, *Zeitschrift für Papyrologie und Epigraphik* 86, 1991, 291-295.
- Guida 1926  
*Guida del Palazzo di Piazzola sul Brenta (Villa Camerini)*, Piazzola sul Brenta 1926.
- Heckler 1929  
A. Heckler, *Die Sammlung antiker Skulpturen. Anhang: die antiken Skulpturen im Ungarischen Nationalmuseum und im Budapester Privatbesitz*, Vienna 1929.
- Indici 1791  
*Indici e tavole dei marmi antichi scritti e figurati componenti il Museo Nani*, s.l. 1791.
- Jadrić 2008  
I. Jadrić, *Svečanosti u čast boga Libera u Seniji i Saloni*, *Histria Antiqua* 16, 2008, 127-136.
- Kroll 1972  
J.H. Kroll, *The Athenian Bronze Allotment Plates*, Cambridge, Mass. 1972.
- Kruglov 2007  
A.V. Kruglov, *“Statua marmorea di Venere nuda, che non fu mai pubblicata”: sculture classiche dell'Ermitage provenienti da Venezia*, *Arte Veneta* 64, 2007, 47-71.
- Lombardi 1980  
P. Lombardi, *Iscrizioni greche extra-urbane del Museo Nazionale Romano*, *Tituli* 2, 1980, 179-191.
- Lombardi 1992-1993  
P. Lombardi, *Associazione dionisiaca in una iscrizione della collezione Nani*, *Scienze dell'Antichità* 6-7, 1992-1993, 89-103.
- Lonardi 2007  
A. Lonardi, *Baebia Prisca. Da Roma a Dublino, il viaggio di un'iscrizione e delle sue sorelle*, in Cresci Marrone, Pistellato 2007, 369-384.
- Luciani 2013  
F. Luciani, *La collezione Pagani di Belluno. Vicende storiche e consistenza della raccolta epigrafica*, *Epigraphica* 75, 2013, 283-307.
- Maffei 1732  
S. Maffei, *Verona Illustrata*, III. *Contiene la notizia delle cose in questa città più osservabili*, Verona 1732.
- Maffei 1749  
S. Maffei, *Museum Veronense*, Verona 1749.
- Meletios 1728  
Meletios, *Γεωγραφία παλαιά και νέα*, Venice 1728.
- Meyer-Petit 1980  
J. Meyer-Petit, *Bronzes antiques de la collection Dutuit: grecs, hellénistiques, romains et de l'Antiquité tardive*, Paris 1980.
- Montfaucon 1702  
B. de Montfaucon, *Diarium Italicum. Sive Monumentorum veterum, Bibliothecarum, Musaeorum, & c. Notitiae singulares in Itinerario Italico collectae*, Paris 1702.
- Mustoxidi 1848  
A. Mustoxidi, *Delle cose corcirese*, I, Corfu 1848.

## Panciera 1998

S. Panciera, *Ancora nomi nuovi o rari da iscrizioni latine di Roma*, *Arctos* 32, 1998, 149-173.

## Passeri 1759

G. Passeri, *Osservazioni sopra l'avorio fossile, e sopra alcuni monumenti greci e latini conservati in Venezia, nel Museo dell'Eccellentissima, patrizia famiglia Nani de' SS. Gervasio e Protasio*, II. *Continuazione delle osservazioni sopra alcuni monumenti greci e latini del Museo Nani ovvero sezione seconda*, Venice 1759.

## Perry 1982

M. Perry, *Antonio Sanquirico, Art Merchant of Venice*, *Labyrinthos* 1/2, 1982, 67-111.

## Picchi 2009

D. Picchi, *Le antichità egiziane di Pelagio Palagi e il mercato antiquario veneziano*, *EDAL Egyptian & Egyptological Documents, Archives, Libraries* 1, 2009, 35-40.

## Picchi 2012

D. Picchi, *Dai Nani di San Trovaso a Pelagio Palagi: formazione e diaspora di una collezione veneziana*, in E. Ciampini, P. Zanovello (eds.), *Frammenti d'Egitto*, Atti del convegno (Padua, 15-16 November 2010), Padua 2012, 89-103.

## Picchi 2015

D. Picchi, *The Egyptian Antiquities in Bologna and Venice at Zoëga's Time*, in Ascani, Buzi, Picchi 2015, 140-150.

## Pollak 1994

L. Pollak, *Römische Memoiren. Künstler, Kunstliebhaber und Gelehrte, 1893-1943*, ed. M. Merkel Guldán, Rome 1994.

## Pontani 2008

A. Pontani, "Or vedete, amico carissimo... ": appunti sulla "cassetta gialla" del medagliere naniano di Venezia, in Ch. Maltézou, P. Schreiner, M. Losacco (eds.), *Philanagnotes. Studi in onore di Marino Zorzi*, Venice 2008, 309-338.

## Quadri 1828

A. Quadri, *Il Canal Grande di Venezia*, Venezia 1828.

## Reinach 1908

S. Reinach, *Répertoire de la Statuaire grecque et romaine*, II, Paris 1908.

## Ritti 1981

T. Ritti, *Iscrizioni e rilievi greci nel Museo Maffeiano di Verona*, Rome 1981.

## Schmidt 2013

M. G. Schmidt, *Inscriptiones Berolinenses Latinae*, in W. Eck, B. Fehér, P. Kovács (eds.), *Studia epigraphica in memoriam Géza Alföldy*, Bonn 2013, 307-326.

## Silence 1996

*Silence et fureur. La femme et le mariage en Grèce. Les antiquités grecques du Musée Calvet*, Avignon 1996.

## Sinn 1987

F. Sinn, *Stadtrömische Marmorurnen*, Mainz 1987.

## Solin 1993

H. Solin, *Iscrizioni inedite di raccolte private a Roma*, *Bollettino della Commissione Archeologica di Roma* 95, 1993, 97-109.

## Veyne 1987

P. Veyne, *De Halai en Dalmatie. Un voeu de voyageur et les rêves chez Virgile*, in *Poikilia. Études offertes à Jean-Pierre Vernant*, Paris 1987, 381-395.

## Walters 1899

H.B. Walters, *Catalogue of the Bronzes, Greek, Roman, and Etruscan, in the Department of Greek and Roman Antiquities, British Museum*, London 1899.

## Zorzi (forthcoming)

N. Zorzi, *Epigrafi bizantine dalla collezione della famiglia Nani (XVIII secolo)*, in *Dialoghi con Bisanzio. Spazi di discussione, percorsi di ricerca, Atti dell'VIII Congresso Nazionale dell'Associazione Italiana di Studi Bizantini* (Ravenna, 22-25 settembre 2015), forthcoming.