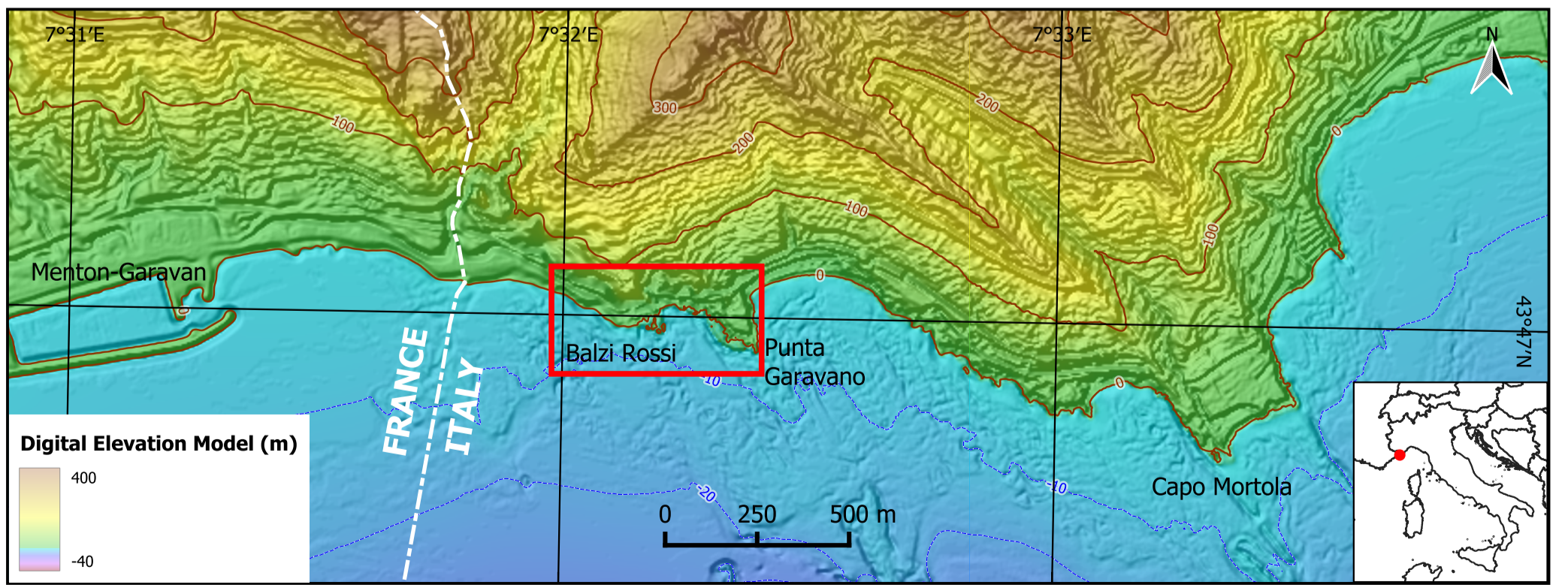
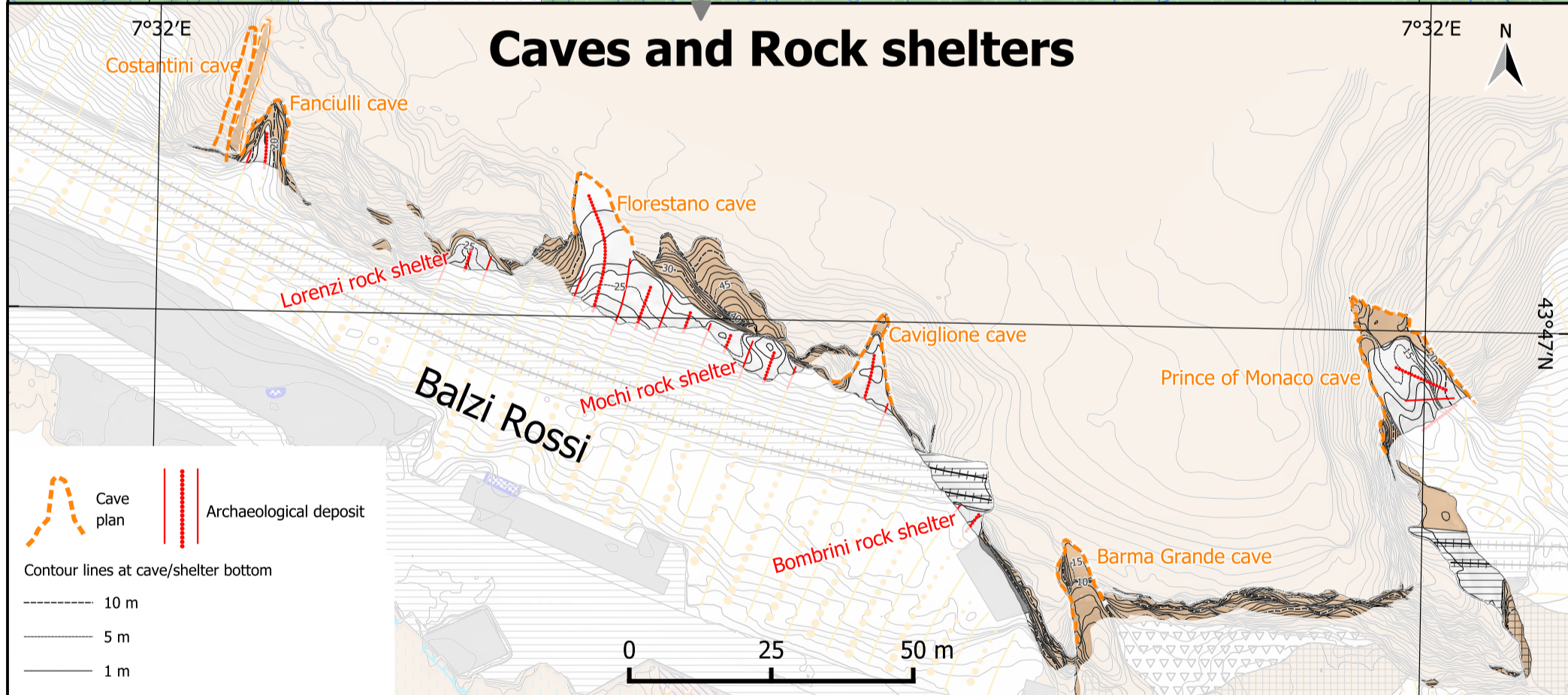
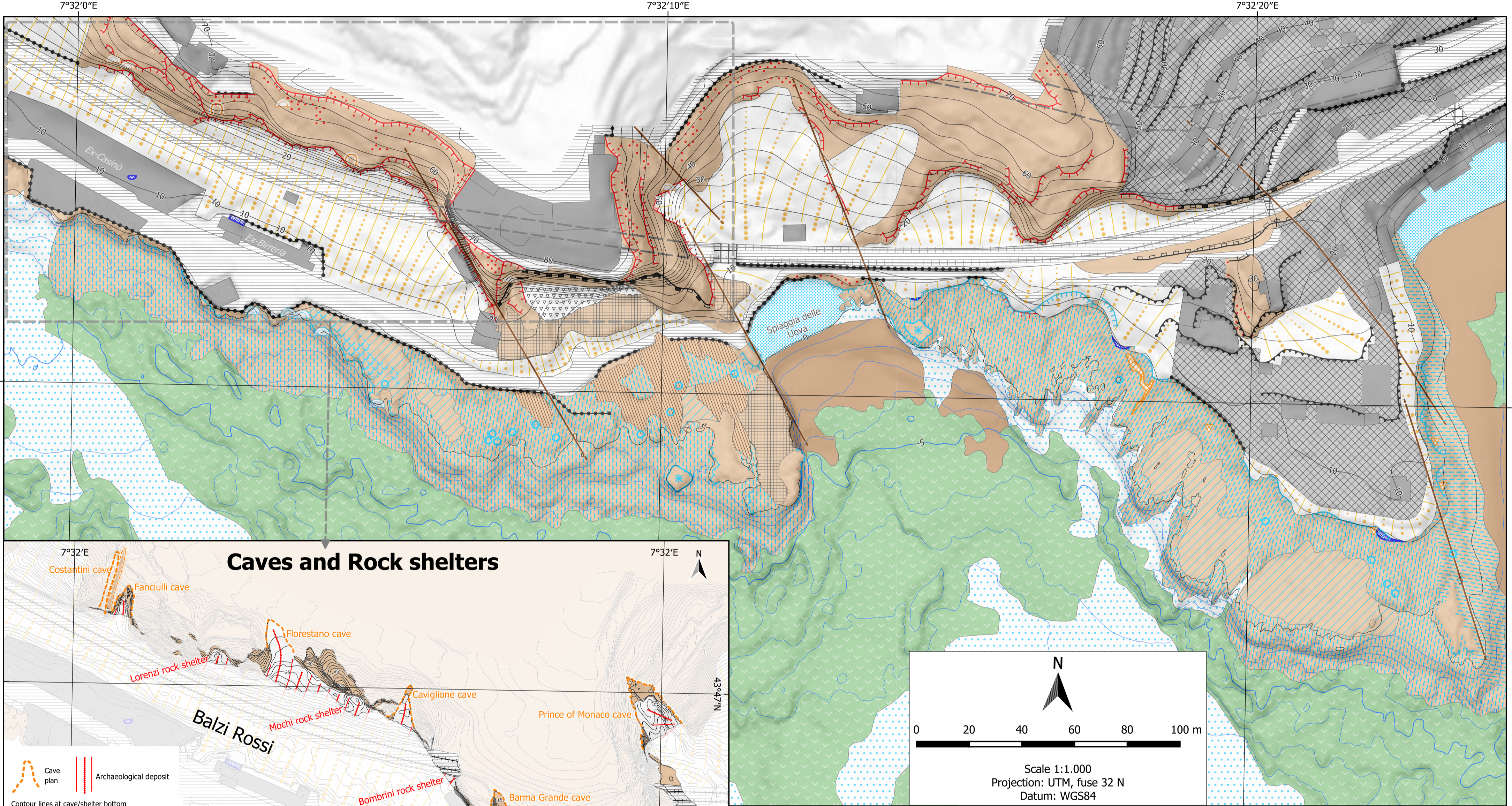


Geomorphology of Balzi Rossi and Punta Garavano, Ventimiglia (NW Italy)



Marta Pappalardo^{1*}, Alessandro Perego², Gabriella Raffa¹, Matteo Vacchi¹, Alessio Rovere³, Elisa Casella³, Deirdre D. Ryan¹, Luca Forti², Andrea Pezzotta², Irene M. Bollati², Manuela Pelfini², Elisabetta Starnini⁴, Andrea Zerboni²

1) Dipartimento di Scienze della Terra, Università di Pisa, Via Santa Maria 53, I-56126 Pisa, Italy 2) Dipartimento di Scienze della Terra "A. Desio", Università degli Studi di Milano, via L. Mangiagalli 34, I-20133 Milano, Italy 3) Dipartimento di Scienze Ambientali, Statistica e Informatica, Università Ca' Foscari, Dorsoduro 3246, I-30123 Venezia, Italy 4) Dipartimento di Civiltà e Forme del Sapere, Università di Pisa, via dei Mille 19, I-56126, Pisa, Italy - *Corresponding author: marta.pappalardo@unipi.it



GEOLOGICAL AND STRUCTURAL ELEMENTS

Lithology

Limestone

Tectonic elements

Fault

TECTONIC LANDFORMS

Fault slope

GRAVITY-INDUCED SLOPE LANDFORMS

Active

Cliff

Talus fed by rockfalls

Inactive

Scree slope

COASTAL AND SUBMARINE LANDFORMS

Active

Notch

Coastal cliff

Sea cave

Sea stack

Shore platform

Ramp

Beach (pebbly)

Intermatte deposit (sandy/pebbly)

Rock pool

Posidonia seagrass meadow

Inactive

Ancient beach remains

Dead Posidonia matte

KARST LANDFORMS

Inactive

Clastic karst deposit

Cave entrance

Rock shelter

ANTHROPOGENIC LANDFORMS

Building

Bridge

Abandoned quarry

Quarry debris

Infrastructures (road and railway)

Terraced slope

Tunnel

Edge of anthropic terrace

Railway track

Scarp

< 5 m

5-15 m

15-50 m

> 50 m

TOPOGRAPHY AND BATHIMETRY

Contour lines

5 m

10 m

Bathimetric lines

-1 m

-5 m