



Interfaces with Other Disciplines

The complete Gaussian kernel in the multi-factor Heston model: Option pricing and implied volatility applications



Maria Cristina Recchioni^{a,*}, Giulia Iori^b, Gabriele Tedeschi^c, Michelle S. Ouellette^d

^a Department of Economics and Social Sciences, Università Politecnica delle Marche, Ancona, Italy

^b Department of Economics, City, University of London, Northampton Square, London EC1V 0HB, UK

^c Department of Economics, Universitat Jaume I, Castellón, Spain Dipartimento di Economia, Management e Diritto dell'Impresa, Università degli Studi di Bari Aldo Moro (Italy) Largo Abbazia Santa Scolastica, 5370124 Bari (Italy)

^d Self-Employed, Cabrera Pinto 10, Santa Cruz de La Palma 38700, Spain

ARTICLE INFO

Article history:

Received 24 January 2019

Accepted 30 November 2020

Available online 5 December 2020

Keywords:

Finance

Stochastic volatility models

Option pricing

Variance risk premium

ABSTRACT

In this paper, we propose two new representation formulas for the conditional marginal probability density of the multi-factor Heston model. The two formulas express the marginal density as a convolution with suitable Gaussian kernels whose variances are related to the conditional moments of price returns. Via asymptotic expansion of the non-Gaussian function in the convolutions, we derive explicit formulas for European-style option prices and implied volatility. The European option prices can be expressed as Black–Scholes style terms plus corrections at higher orders in the volatilities of volatilities, given by the Black–Scholes Greeks. The explicit formula for the implied volatility clearly identifies the effect of the higher moments of the price on the implied volatility surface. Further, we derive the relationship between the VIX index and the variances of the two Gaussian kernels. As a byproduct, we provide an explanation of the bias between the VIX and the volatility of total returns, which offers support to recently proposed methods to compute the variance risk premium. Via a series of numerical exercises, we analyse the accuracy of our pricing formula under different parameter settings for the one- and two-factor models applied to index options on the S&P500 and show that our approximation substantially reduces the computational time compared to that of alternative closed-form solution methods. In addition, we propose a simple approach to calibrate the parameters of the multi-factor Heston model based on the VIX index, and we apply the approach to the double and triple Heston models.

© 2020 Elsevier B.V. All rights reserved.

1. Introduction

1.1. Motivation

The well-known Heston (1993) model provides a natural generalization of the Black and Scholes approach to option pricing by introducing stochastic dynamics for the volatility of returns. With its ability to reproduce several empirical features in the dynamics of asset prices, such as the leverage effect and the clustering of volatility, the Heston model has become one of the most widely used stochastic volatility models in the derivatives market. While the Heston model can generate smiles and smirks, it does not provide sufficient flexibility to capture the shape of the implied volatility surfaces, in particular, the largely independent fluctuations in slope and level over time. Another drawback of the He-

ston model is that it predicts a flattening of the curvature of the implied volatility that is faster than that observed in the market when time to maturity increases. To address these shortcomings, a multi-factor extension of the Heston model has been proposed. Christoffersen, Heston, and Jacobs (2009) were among the first to show that at least two factors are needed to realistically capture the implied volatility slope and level dynamics. Their results indicate that one factor is strongly mean reverting, whereas the other is slowly varying, providing more flexible modelling of the volatility term structure.

Exact analytical solutions for the price of vanilla European call options under the Heston and multi-factor Heston model are available in terms of integrals in the complex plane that must be computed by numerical integration over the characteristic functions (Christoffersen et al., 2009; Cui, del Bano Rollin, & Germano, 2017; Duffie, Pan, & Singleton, 2000; Fatone, Mariani, Recchioni, & Zirilli, 2009; 2013; Heston, 1993; Lewis, 2000; Recchioni & Sun, 2016; Recchioni & Tedeschi, 2017; Veng, Yoon, & Choi, 2019).

* Corresponding author.

E-mail addresses: m.c.recchioni@univpm.it (M.C. Recchioni), g.iori@city.ac.uk (G. Iori).

Here, we propose two new closed analytical solutions based on two integral representation formulas for the conditional marginal density function, which we express as a convolution with suitable Gaussian kernels. These formulas provide a natural way to connect the margins of the multi-factor Heston model to the probability density function of the Black–Scholes model. Specifically, we extract two Gaussian kernels (Theorems 2.1 and 2.2). The first kernel, G_{Γ_0} , well known in the literature, has a variance Γ_0 that is independent of the volatilities of volatilities (vols of vols) and is given by the integrated conditional mean of the point-in-time variance. The other kernel, G_{Γ_2} , is hidden in the marginal probability density and has therefore not been explored in the literature. The variance Γ_2 coincides with the conditional variance of continuously compounded returns. We show that G_{Γ_2} is the “complete” kernel of the Heston model and its multi-factor generalization. Our representation formulas allow us to express the price of any derivative contract, not just vanilla contracts, as the price in a Black–Scholes world, with variance Γ_0 or Γ_2 , convolved with a suitable function that does not depend on the specific payoff of the contract.

The convolution formulas can be computed by solving the integrals numerically. While numerical integration methods are extremely powerful in terms of accuracy, they do not provide an explicit link between the structural properties of the model and the characteristics of the prices. In addition, while closed-form solutions are particularly useful for model calibration, common practice is to calibrate the implied volatility observed in the market, rather than the option prices, because implied volatility is a standardized measure of option prices that makes them comparable even when the underlying assets are not the same. Unfortunately, exact closed-form solutions for implied volatilities are not available in the Heston and multi-factor Heston framework. Therefore, easy-to-implement analytical approximations based on perturbation and asymptotic methods have become popular. Approximations not only help to accelerate the calibration to market-observed quantities but also enhance the understanding of the analytical features of the model and the implied volatility surface.

1.2. Literature review

The earliest and best known asymptotic results are from Lewis (2000), who derived an asymptotic expansion for small values of the vols of vols. This result was followed by Lee (2001), who obtain similar results assuming a slow mean reversion of volatility, and Fouque and Lorig (2011), who assume fast mean-reverting volatility. Additionally, Antonelli and Scarlatti (2009) make an expansion around zero correlation. Friz, Gerhold, Gulisashvili, and Sturm (2011) derive an asymptotic expansion for the implied volatility of the Heston model for a large strike price. Forde and Jacquier (2009) obtain the small-time behavior of the implied volatility in the Heston model (with correlation), while Forde and Jacquier (2011) use large deviation techniques to obtain the small-time behavior of the implied volatility for general stochastic volatility models with zero correlation. Kristensen and Mele (2011) do not approximate the asset price directly but develop a power series expansion of the expected bias that would arise if the Black–Scholes model was used to price derivatives when the true market dynamics obeyed the Heston model. Drimus (2011) follows a similar approach using a different series expansion and shows how the convexity in volatility, measured by the Black–Scholes Volga, and the sensitivity of delta with respect to volatility, measured by the Black–Scholes Vanna, impact option prices in the Heston model. Fouque, Papanicolaou, Sircar, and Solna (2011) derive an asymptotic expansion for general multiscale stochastic volatility models using combined singular and regular perturbation theory. Bergomi and Guyon (2011) also consider multi-factor stochastic volatility models and derive an approximation for the volatility smile at the

second order in the vols of vols. Their results coincide with those of Lewis (2000) in the case of the Heston model. Lorig, Pagliarini, and Pascucci (2017) derive a family of asymptotic expansions for European-style option prices and implied volatilities for a general class of local stochastic volatility models.

Some authors have derived asymptotic expansions in a jump-diffusion stochastic volatility setting (see Berestycki, Busca, & Florent, 2004; Medvedev & Scaillet, 2007). More recently, Jacquier and Lorig (2014) provide an explicit implied volatility approximation for any model with an analytically tractable characteristic function, which includes both affine stochastic volatility and exponential Lévy models. Nicolato and Sloth (2012) and Takahashi and Yamada (2012) develop asymptotic expansions around the Black–Scholes model for stochastic volatility models with jump diffusion. Pagliarini and Pascucci (2013) add jumps to a local-stochastic volatility model.

Benhamou, Gobet, and Miri (2009) employ Malliavin calculus to develop an approximation formula under the one-factor Heston model with time-dependent parameters. Their option prices are given by a Black–Scholes term plus corrections related to the Greeks of the option. Nagashima, Chung, and Tanaka (2014) extend these results to the general multi-factor Heston model with time-dependent parameters and find a similar expansion but with an extra term that captures the interaction between the different variance factors. Alós et al. (2012) use Malliavin calculus to study the short-term behavior of implied volatility for jump-diffusion models with stochastic volatility. Veng et al. (2019) derive an asymptotic expansion for put prices, extending the results of Benhamou et al. (2009) to the general multi-factor Heston model with time-dependent parameters.

Considerable attention has also been devoted to approximating the risk-neutral density, as proposed by Abadir and Rockinger (2003), Ait-Sahalia (2002), Egorov, Li, and Xu (2003), and Yu (2007).

In line with this literature, we propose an asymptotic expansion of the conditional marginal density for small values of the vols of vols. The main difference with respect to the literature is that the expansion is done after extracting the Gaussian kernels, i.e., we expand only the function that is convolved with the Gaussian kernels. This approach yields particularly interesting results when the G_{Γ_2} kernel is used, given that its dependence on the vols of vols is fully retained. With our approach, we naturally obtain option prices that can be expressed as the Black–Scholes price plus correction terms related to the Greeks of the options. Similarly, the implied volatility can be written as the square root of the integrated conditional variance plus corrections due to higher-order risks. These decompositions provide a clear understanding of how option prices and implied volatility respond to changes in the model parameters and underlying quantities, which is very important in practice for hedging purposes.

1.3. Main contribution

Our paper contributes to the existing literature in several respects. First, we provide two new exact formulas for the conditional marginal density of the multi-factor Heston model (Theorems 2.1 and 2.2). As mentioned above, each formula expresses the marginal probability density as a convolution of a Gaussian kernel whose variance is related to the price-return process. While we do not compute these formulas numerically, this approach avoids some numerical challenges in computing the complex integrals involved in option pricing in the multi-factor Heston model.

Second, following the approach of Zhang, Shu, and M. (2010); Zhang, Zhen, Sun, and Zhao (2017), we derive analytical formulas for the higher-order cumulants in the multi-factor Heston frame-

work. These formulas show that the variance of the Gaussian kernel, \mathcal{G}_{Γ_2} , is given by the variance of the continuously compounded return.

Third, we provide explicit approximation formulas for the marginal density function as a Gaussian kernel plus corrections using an asymptotic expansion for the non-Gaussian term in the convolution that defines the marginal probability. With this expansion, we obtain explicit formulas for European vanilla call and put options prices that can be expressed as the Black–Scholes price plus corrections at higher orders of the vols of vols (see Proposition 3.1). These formulas satisfy the put-call parity equation at any order of approximation. The formulas using the Gaussian kernel \mathcal{G}_{Γ_0} , while derived with a different approach, are equivalent to those of Bergomi and Guyon (2011) for the Heston model and are similar to those of Veng et al. (2019) for the multi-factor Heston model. However, these authors explicitly compute the first-order corrections in the slow and fast time scales, so they do not capture the effect of price skewness on the convexity of the implied volatility. The formulas using the Gaussian kernel \mathcal{G}_{Γ_2} are new and outperform those obtained using the Gaussian kernel \mathcal{G}_{Γ_0} for out-of-the-money options.

Finally, we derive an approximation for the implied volatility from a second-degree polynomial function of the forward moneyness. This formula allows the effect of price skewness on the asymmetry of the volatility smile to be clearly identified, in addition to the level, slope, and curvature of the implied volatility smirk. For the Heston model with zero drift, our formula is analogous to that of Bergomi and Guyon (2011), and is in line with the approximation formula in a non-parametric setting proposed by Zhao, Zhang, and Chang (2013). The key insight of our formula is explicit expressions for the level, slope and convexity in terms of the cumulative uncertainty of the asset price and the integrated volatility process. This is a new result that has not been reported in the literature.

Our work also contributes to the growing literature that explores the bias between the VIX index and the integrated conditional mean of the point-in-time variance, and it provides a possible interpretation of the variance risk premium. Defining the variance risk premium as the positive difference between the second cumulants in the physical and risk-neutral measures (in line with Zhao et al., 2013), we compute the premium explicitly in the multi-factor Heston model. In particular, we show that the risk-neutral second cumulant coincides with the square root of Γ_2/T , which is an implied volatility. Furthermore, we show that the VIX index can be associated not only with Γ_0 (i.e., the integrated conditional variance) but also with Γ_2 (i.e., the variance of the compounded return in the risk-neutral measure) opening the opportunity to calibrate the parameters of the multi-factor Heston model directly from the VIX. This result also provides support to recently proposed methods to compute the variance risk premium from model-free option-implied volatility measures. We also propose an explanation for the bias usually observed between the VIX index and the volatility of total returns. This topic is discussed further in Section 3.3.

Finally, we provide a one-dimensional integral representation formula for European call and put options in the multi-factor Heston model following the approach in Recchioni and Sun (2016). These formulas are used as an exact benchmark against which to test the accuracy of our option price approximations.

The rest of this paper is organized as follows. In Section 2, we review the multi-factor Heston model, derive the main results of the paper, i.e., the two representation formulas for the conditional marginal density function, and introduce the two Gaussian kernels \mathcal{G}_{Γ_0} and \mathcal{G}_{Γ_2} . In Section 3, we derive approximation formulas, in powers of the vols of vols, for option prices and implied volatility, and we provide an interpretation of the volatility smile. We then derive the relationship between the variances of the two kernels

and the VIX index. In Section 4, we present two simulation studies to assess the accuracy of our approximated formulas, and in Section 5, we present empirical analyses to assess the effectiveness of our approach in terms of model calibration and forecasting option prices one day ahead. In Section 6, we show empirically that the squared VIX is better approximated by Γ_2 than Γ_0 , and we use the VIX index to calibrate the parameters of the double and triple Heston models. Our results suggest that the dynamics of the third factor may be influenced by changes in macroeconomic conditions. Section 7 concludes. The proofs of the main results are given in Appendix A, while Appendices B and C report the derivation of the formulas for the option pricing with the expansion based on the Gaussian kernel \mathcal{G}_{Γ_0} (Appendix B) and the true marginal density (Appendix B). Supplementary material with detailed proofs and some additional results is available online.

2. Multi-factor Heston model treatment

In this section, we present the multi-factor Heston stochastic volatility model and the main theoretical results of the paper. The final goal is to derive an explicit, approximate expression for the price of European call and put options and for the implied volatility in the multi-factor Heston framework. The key results are two representation formulas for the conditional marginal density function (which is the starting point for the derivation of the option prices) associated with the multi-factor Heston model. The first representation formula shows that the conditional marginal density can be expressed as the convolution of a Gaussian kernel, that does not depend on the Heston vols of vols parameters, and a function that includes all the effects of the vols of vols. The second formula reveals the complete Gaussian kernel, i.e., the one that includes all the effects of the vols of vols and is able to fully capture the process dynamics.

The multi-factor Heston model (Christoffersen et al., 2009) assumes the following stochastic volatility model:

$$dx_t = \left(r(t) - \frac{1}{2} \sum_{j=1}^n v_{j,t} \right) dt + \sum_{j=1}^n \sqrt{v_{j,t}} dz_{j,t}, \quad t > 0, \quad (1)$$

$$dv_{j,t} = \chi_j (v_j^* - v_{j,t}) dt + \gamma_j \sqrt{v_{j,t}} dW_{j,t}, \quad t > 0, \quad (2)$$

where x_t denotes the log-price variable, $v_{1,t}, \dots, v_{n,t}$ is the corresponding variances, $r(t)$ is the instantaneous risk-free rate (assumed to be known in advance), χ_j , v_j^* , and γ_j are positive constants, and $z_{j,t}$, $W_{j,t}$, $j = 1, 2, \dots, n$, are standard Wiener processes. All correlations among the Wiener processes are zero, except for $E(dz_{j,t}, dW_{j,t}) = \rho_j dt$, where $\rho_j \in (-1, 1)$, $j = 1, 2, \dots, n$ are constant correlation coefficients. Dividends are not included. The system of Eqs. (1)–(2) is equipped with the following initial conditions:

$$x_0 = \log \tilde{S}_0, \quad (3)$$

$$v_{j,0} = \tilde{v}_{j,0}, \quad (4)$$

where \tilde{S}_0 and $\tilde{v}_{j,0}$, $j = 1, 2, \dots, n$, are the initial spot price and variance respectively, which are assumed to be random variables concentrated at a point with probability one.

As specified in Heston (1993), the quantities χ_j are the speeds of mean reversion, v_j^* represents the long-term means, and γ_j denotes the local variances (or volatilities of volatility) of each volatility process v_j . These parameters are assumed to be positive, so the process is well defined.

Notably, if the Feller condition is enforced, i.e., $2\chi_j v_j^* / \gamma_j^2 > 1$, the variances $v_{j,t}$ are positive for any $t > 0$ with probability one

(stationary volatility) and $v_{j,0} = \tilde{v}_{j,0} > 0, j = 1, 2, \dots, n$ (see Revuz and Yor [25, Chapter XI] for the Bessel process).

Furthermore, we use $\underline{\gamma}, \underline{v}$ to denote the vectors containing the vols of vols, $\underline{\gamma} = (\gamma_1, \gamma_2, \dots, \gamma_n)$, and the variances, $\underline{v} = (v_1, v_2, \dots, v_n)$, respectively. The transition probability density function (pdf) associated with the stochastic differential system (1), (2) is denoted by $p_f(x, \underline{v}, t, x', \underline{v}', t')$, $(x, \underline{v}), (x', \underline{v}') \in \mathbb{R} \times \mathbb{R}^{n^+}$, $t, t' \geq 0, t' - t > 0$, where \mathbb{R} denotes the set of real numbers, \mathbb{R}^n is the n -dimensional Euclidean vector space, and \mathbb{R}^{n^+} the positive orthant. We also introduce the processes $X_{t'}$ and $Y_{t'}$ associated with the multi-factor Heston model (1):

$$X_{t'} = \int_t^{t'} \sum_{j=1}^n \sqrt{v_{j,\tau}} dZ_{j,\tau}, \tag{5}$$

$$Y_{t'} = \int_t^{t'} \sum_{j=1}^n [v_{j,\tau} - E(v_{j,\tau} | \mathcal{F}_t)] d\tau, \tag{6}$$

where \mathcal{F}_t is the information set, i.e., the continuous σ -algebra generated by the point-in-time volatility processes, and $E(v_{j,s} | \mathcal{F}_t)$ is the conditional mean of the point-in-time variance given by

$$E(v_{j,t'} | \mathcal{F}_t) = v_{j,t} e^{-\chi_j(t'-t)} + v_j^* (1 - e^{-\chi_j(t'-t)}), \quad t < t'. \tag{7}$$

According to Zhang et al. (2017), $X_{t'}$ measures the cumulative uncertainty of the asset return and $Y_{t'}^1$ is the uncertainty of the integrated variance process over the time interval $[t, t']$. $R_t^{t'}$ is the continuously compounded return defined as

$$R_t^{t'} = X_{t'} - X_t = \int_t^{t'} \left[\left(r(\tau) - \frac{1}{2} \sum_{j=1}^n v_{j,\tau} \right) d\tau + \sum_{j=1}^n \sqrt{v_{j,\tau}} dZ_{j,\tau} \right] \tag{8}$$

with

$$E(R_t^{t'} | \mathcal{F}_t) = \int_t^{t'} \left[r(\tau) - \frac{1}{2} \sum_{j=1}^n E(v_{j,\tau} | \mathcal{F}_t) \right] d\tau$$

which is related to processes $X_{t'}$ and $Y_{t'}$ as follows

$$R_t^{t'} - E(R_t^{t'} | \mathcal{F}_t) = X_{t'} - \frac{1}{2} Y_{t'}. \tag{9}$$

In the following, we provide a representation formula for the conditional marginal density function, which enables extraction of the Gaussian kernel underlying the multi-factor Heston model (Theorems 2.1 and 2.2). Specifically, we use \mathcal{G}_Γ to denote the Gaussian kernel with variance $\Gamma(t, t')$, $t < t'$, that is:

$$\begin{aligned} \mathcal{G}_\Gamma(y, t, t') &= \frac{1}{\sqrt{2\pi\Gamma(t, t')}} e^{-\frac{1}{2\Gamma(t, t')} (y - \int_t^{t'} r(s) ds + \frac{1}{2}\Gamma(t, t'))^2} \\ &= \frac{1}{2\pi} \int_{-\infty}^{+\infty} e^{ik \left[y - \int_t^{t'} r(s) ds + \frac{1}{2}\Gamma(t, t') \right] - \frac{1}{2}\Gamma(t, t') k^2} dk. \end{aligned} \tag{10}$$

We extract two Gaussian kernels², identified in Theorems 2.1 and 2.2, that we denote as the zero-order kernel \mathcal{G}_{Γ_0} and the second-order kernel \mathcal{G}_{Γ_2} . As we show later, the terms “zero-order” and “second-order” reflect the fact that they contain, respectively, no powers of $\underline{\gamma}$ and all terms of second degree in $\underline{\gamma}$.

Theorem 2.1 shows that the marginal probability density of the log-price variable can be written (see Eq. (18)) as the convolution of the Gaussian kernel \mathcal{G}_{Γ_0} (independent of the vols of vols) and the function \mathcal{L}_γ , which accounts for the vols of vols effect.

¹ The conditional moments of the process $Y_{t'}$ are also known as risk-neutral cumulants (see, Zhao et al., 2013).

² We refer the reader to the supplementary material for a discussion of an additional Gaussian kernel \mathcal{G}_{Γ_1} .

Theorem 2.1. The marginal probability density of the log-price variable conditioned on $\underline{v}_t = \underline{v}$ is given by

$$\begin{aligned} M(x, \underline{v}, t, x', t') &= \int_{\mathbb{R}^{n^+}} p_f(x, \underline{v}, t, x', \underline{v}', t') d\underline{v}' \\ &= \frac{1}{2\pi} \int_{-\infty}^{+\infty} e^{ik \left[(x' - x) - \int_t^{t'} r(s) ds + \frac{1}{2}\Gamma_0(t, t') \right] - \frac{1}{2}\Gamma_0(t, t') k^2} \\ &\quad \times \underbrace{e^{\sum_{j=1}^n \int_t^{t'} E(v_{j,s} | \mathcal{F}_t) \left[\frac{\gamma_j^2}{2} B_j^2(k, s, t') + i k \rho_j \gamma_j B_j(k, s, t') \right] ds}}_{\text{contribution from vols of vols}} dk, \end{aligned} \tag{11}$$

Fourier transform of Gaussian kernel

where i is an imaginary unit and $E(v_{j,s} | \mathcal{F}_t)$ is the conditional mean (7). Here, B_j is given by

$$B_j(k, t, t') = \frac{1}{2} (k^2 - i k) \frac{1 - e^{-2\zeta_j(t'-t)}}{(\zeta_j + v_j) + (\zeta_j - v_j) e^{-2\zeta_j(t'-t)}}, \tag{12}$$

where ζ_j and v_j are the following quantities:

$$\zeta_j(k) = \frac{1}{2} (4v_j^2 + \gamma_j^2 (k^2 - i k))^{1/2}, \tag{13}$$

$$v_j(k) = \frac{1}{2} (i k \rho_j \gamma_j + \chi_j). \tag{14}$$

Furthermore, M can be written as:

$$M(x, \underline{v}, t, x', t') = \int_{-\infty}^{+\infty} \mathcal{G}_{\Gamma_0}(x' - x - y, t, t') \mathcal{L}_\gamma(y, t, t') dy, \tag{15}$$

where $\Gamma_0(t, t')$ is given by:

$$\Gamma_0(t, t') = \sum_{j=1}^n \int_t^{t'} E(v_{j,s} | \mathcal{F}_t) ds, \tag{16}$$

where \mathcal{G}_{Γ_0} is the Gaussian kernel in (10), computed for $\Gamma(t, t') = \Gamma_0(t, t')$, and \mathcal{L}_γ is a function that accounts in full for the effects of the vols of vols:

$$\mathcal{L}_\gamma(y, t, t') = \frac{1}{2\pi} \int_{-\infty}^{+\infty} e^{iky} e^{\sum_{j=1}^n \int_t^{t'} E(v_{j,s} | \mathcal{F}_t) \left[\frac{\gamma_j^2}{2} B_j^2(k, s, t') + i k \rho_j \gamma_j B_j(k, s, t') \right] ds} dk. \tag{17}$$

Proof. See Appendix A. \square

Building from the previous result, we derive Theorem 2.2, which provides an alternative representation of the marginal density function expressed as the convolution of the Gaussian kernel \mathcal{G}_{Γ_2} and the function \mathcal{L}_γ^* .

Theorem 2.2. The marginal probability density of the log-price variable conditioned on $\underline{v}_t = \underline{v}$ is given by

$$\begin{aligned} M(x, \underline{v}, t, x', t') &= \frac{1}{2\pi} \int_{-\infty}^{+\infty} e^{ik \left[(x' - x) - \int_t^{t'} r(s) ds + \frac{1}{2}\Gamma_2(t, t') \right] - \frac{1}{2}\Gamma_2(t, t') k^2} e^{\sum_{j=1}^n \int_t^{t'} E(v_{j,s} | \mathcal{F}_t) H_j(k, s, t') ds} dk \\ &= \int_{-\infty}^{+\infty} \mathcal{G}_{\Gamma_2}(x' - x - y, t, t') \mathcal{L}_\gamma^*(y, t, t') dy, \end{aligned} \tag{18}$$

where \mathcal{L}_γ^* is:

$$\mathcal{L}_\gamma^*(y, t, t') = \frac{1}{2\pi} \int_{-\infty}^{+\infty} e^{iky} e^{\sum_{j=1}^n \int_t^{t'} E(v_{j,s} | \mathcal{F}_t) H_j(k, s, t') ds} dk. \tag{19}$$

Here, Γ_2 is defined by

$$\begin{aligned} \Gamma_2(t, t') &= \Gamma_0(t, t') - 2S_1(t, t') + 2S_2(t, t') \\ &= \sum_{j=1}^n \int_t^{t'} E(v_{j,s} | \mathcal{F}_t) \\ &\quad \times \left[(1 - \rho_j^2) + \left(\frac{\gamma_j}{2\chi_j} (1 - e^{-\chi_j(t'-s)}) - \rho_j \right)^2 \right] ds, \end{aligned} \tag{20}$$

and S_1 and S_2 are given by:

$$S_1(t, t') = \frac{1}{2} \sum_{j=1}^n \frac{\rho_j \gamma_j}{\chi_j} \int_t^{t'} E(v_{j,s} | \mathcal{F}_t) (1 - e^{-\chi_j(t'-s)}) ds, \tag{21}$$

$$S_2(t, t') = \sum_{j=1}^n \frac{\gamma_j^2}{8\chi_j^2} \int_t^{t'} E(v_{j,s} | \mathcal{F}_t) (1 - e^{-\chi_j(t'-s)})^2 ds, \tag{22}$$

while H_j is given by:

$$H_j(k, t, t') = \frac{\gamma_j^2}{2} B_j^2(k, t, t') + ik\rho_j\gamma_j B_j(k, t, t') + \frac{1}{2} (k^2 - ik) \left[-\frac{\rho_j \gamma_j}{\chi_j} (1 - e^{-\chi_j(t'-t)}) + \frac{1}{4} \frac{\gamma_j^2}{\chi_j^2} (1 - e^{-\chi_j(t'-t)})^2 \right]. \tag{23}$$

Furthermore, the following expansion holds:

$$\mathcal{L}_\gamma^*(y, t, t') = \frac{1}{2\pi} \int_{-\infty}^{\infty} e^{iky} e^{S_1(t, t')(ik^3 + ik) + S_2(t, t')(k^4 - 2ik^3 - ik) + S_{2c}(t, t')(k^4 - 1k^3) - ik(k^2 - ik)^2 S_{3c}(t, t') - 1k(k^4 - 1k^3) S_{3d}(t, t') + o(\|\gamma\|^3)} dk, \tag{24}$$

$$\|\gamma\| \rightarrow 0^+,$$

where S_1 and S_2 are given in Eqs. (21) and (22), while S_{2c} , S_{3c} and S_{3d} are:

$$S_{2c}(t, t') = \sum_{j=1}^n \frac{\gamma_j^2 \rho_j^2}{2\chi_j} \int_t^{t'} E(v_{j,s} | \mathcal{F}_t) e^{-\chi_j(t'-s)} \int_s^{t'} (e^{\chi_j(t'-\tau)} - 1) d\tau ds, \tag{25}$$

$$S_{3c}(t, t') = \sum_{j=1}^n \frac{\gamma_j^3 \rho_j}{\chi_j} \int_t^{t'} E(v_{j,s} | \mathcal{F}_t) \times \left\{ \frac{1}{8} \psi_j^2(s, t') + \frac{(t'-s)}{4\chi_j} (e^{-2\chi_j(t'-s)} - 2e^{-\chi_j(t'-t)}) + \frac{\psi_j(s, t')}{4\chi_j} \right\} ds, \tag{26}$$

$$S_{3d}(t, t') = \sum_{j=1}^n \frac{\gamma_j^3 \rho_j^3}{2\chi_j} \int_t^{t'} E(v_{j,s} | \mathcal{F}_t) \times \left[\frac{\psi_j(s, t')}{\chi_j} - \frac{(t'-s)}{\chi_j} e^{-\chi_j(t'-s)} - \frac{(t'-s)^2}{2} e^{-\chi_j(t'-s)} \right]. \tag{27}$$

where ψ_j is given by:

$$\psi_j(t, t') = \frac{(1 - e^{-\chi_j(t'-t)})}{\chi_j}, \quad t < t'. \tag{28}$$

Proof. See Appendix A. \square

We note that the expansion of H_j in powers of γ_j , as $\gamma_j \rightarrow 0^+$, with degree greater than two involves polynomial functions of k with degree greater or equal to three (see Appendix A). Thus, the function \mathcal{L}_γ^* contains only terms of order k or k^n with $n \geq 3$. All terms of order k^2 are absorbed in \mathcal{G}_{Γ_2} . Therefore, we call \mathcal{G}_{Γ_2} the complete kernel of the multi-factor Heston model, and formula (18) is used to derive the option prices and implied volatility approximations in the next section of this paper³.

The functions \mathcal{L}_γ in (17) and \mathcal{L}_γ^* in (24) satisfy the following equation:

$$\widehat{\mathcal{L}}_\gamma = e^{-(k^2 - ik)(S_2(t, t') - S_1(t, t'))} \widehat{\mathcal{L}}_\gamma^*, \tag{29}$$

³ Higher-order Gaussian kernels have been discussed in Wand and Schucany (1990).

where $\widehat{\mathcal{L}}_\gamma$ and $\widehat{\mathcal{L}}_\gamma^*$ are the Fourier transforms of the functions \mathcal{L}_γ and \mathcal{L}_γ^* with respect to the log-price, respectively.

To provide intuition for the two Gaussian kernels, we derive the relationship between their variances, Γ_0 and Γ_2 , and the processes X_t , Y_t and R_t^t , defined by Eq. (5), Eq. (6) and Eq. (8).

Proposition 2.3. Let $t < t'$ and $X_{t'}$, $Y_{t'}$, and $R_{t'}^t$ be the processes in (5), (6) and (8). We have the following expressions for the conditional moments of $X_{t'}$ and $Y_{t'}$:

$$E(X_{t'}^2 | \mathcal{F}_t) = \Gamma_0(t, T), \quad E(X_{t'}^3 | \mathcal{F}_t) = 6S_1(t, t'),$$

$$E(Y_{t'}^2 | \mathcal{F}_t) = 8S_2(t, t'), \quad E(X_{t'} Y_{t'} | \mathcal{F}_t) = 2S_1(t, t'), \tag{30}$$

$$E(X_{t'}^2 Y_{t'} | \mathcal{F}_t) = 4S_{2c}(t, t') + 8S_2(t, t'), \quad E(X_{t'} Y_{t'}^2) = 8S_{3c}(t, t'). \tag{31}$$

where Γ_0 , S_1 , S_2 , S_{2c} , and S_{3c} are given in (16), (21), (22), (25) and (26)⁴. Finally, in the multi-factor Heston model (1), the conditional variance of the continuously compounded return $R_{t'}^t$ and the price skewness formula, as defined in Das and Sundaram (1999), are:

$$\text{var}(R_{t'}^t | \mathcal{F}_t) = E((R_{t'}^t - E_t(R_{t'}^t))^2 | \mathcal{F}_t) = \Gamma_2(t, t'), \tag{32}$$

and

$$\text{Skewness}_{DS} = \frac{E(X_{t'}^3 | \mathcal{F}_t)}{[E(X_{t'}^2 | \mathcal{F}_t)]^{3/2}} = 6 \frac{S_1(t, t')}{\Gamma_0(t, t')^{3/2}}. \tag{33}$$

where Γ_2 is given in (20).

Proof. The proof follows using the approach proposed in Zhang et al. (2017). A detailed proof is given in the supplementary material online. \square

Notably, the proposed formulas hold for the expectation both in the risk-neutral and physical probability measures. This distinction is necessary in the discussion of the variance risk premium (in Section 3.3).

Interestingly, the variance of the Gaussian kernel \mathcal{G}_{Γ_0} is given by the second-order conditional moment of the process X_t in (5) and is independent of the vols of vols, while the variance of the Gaussian kernel \mathcal{G}_{Γ_2} coincides with the conditional variance of the continuously compounded return $R_{t'}^t$ and, through its dependence on the vols of vols, γ_j , fully captures the dynamics of the multi-factor Heston model. This makes \mathcal{G}_{Γ_2} the most natural kernel representation of the conditional marginal M .

Furthermore, Eq. (33) shows that the function S_1 is responsible for the price skewness and the mixed moment between the cumulative uncertainty of the asset return and the uncertainty of the integrated variance process over the time interval $[t, t']$. In the next section, we show that the price skewness, Skewness_{DS} , given in (33), appears in the coefficient of the second-order term of the implied volatility in Eq. (63) and may cause the “volatility smile” convexity to change.

As a corollary of Theorem 2.2, we provide expansions of the conditional marginal density M in powers of the vols-of-vols vector $\underline{\gamma}$ up to the third order.

⁴ The explicit formula for the conditional moment $E_t(Y_{t'}^3)$ is derived in the supplementary material. Notably, $E_t(Y_{t'})$ is a homogeneous function of degree four in the vols of vols.

Corollary 2.4. The following expansion of the conditional marginal M in (11) in powers of $\underline{\gamma}$ as $\|\underline{\gamma}\| \rightarrow 0$ holds:

$$M(x, \underline{v}, t, x', t') = \mathcal{G}_{\Gamma_2}(x' - x, t, t') + \mathcal{M}_1(x, \underline{v}, t, x', t') + \mathcal{M}_2(x, \underline{v}, t, x', t') + \mathcal{M}_3(x, \underline{v}, t, x', t') + o(\|\underline{\gamma}\|^3), \quad \|\underline{\gamma}\| \rightarrow 0, \quad (34)$$

where \mathcal{G}_{Γ_2} is the Gaussian kernel defined in (10), \mathcal{M}_1 is given by

$$\mathcal{M}_1(x, \underline{v}, t, x', t') = S_1(t, t') \left[-\frac{d^3 \mathcal{G}_{\Gamma_2}}{dx'^3}(x' - x, t, t') + \frac{d \mathcal{G}_{\Gamma_2}}{dx'}(x' - x, t, t') \right], \quad (35)$$

\mathcal{M}_2 is given by

$$\begin{aligned} \mathcal{M}_2(x, \underline{v}, t, x', t') &= S_2(t, t') \\ &\times \left[\frac{d^4 \mathcal{G}_{\Gamma_2}}{dx'^4}(x' - x, t, t') + 2 \frac{d^3 \mathcal{G}_{\Gamma_2}}{dx'^3}(x' - x, t, t') - \frac{d \mathcal{G}_{\Gamma_2}}{dx'}(x' - x, t, t') \right] \\ &+ S_{2c}(t, t') \left[\frac{d^4 \mathcal{G}_{\Gamma_2}}{dx'^4}(x' - x, t, t') + \frac{d^3 \mathcal{G}_{\Gamma_2}}{dx'^3}(x' - x, t, t') \right] \\ &+ \frac{1}{2} S_1^2(t, t') \left[\frac{d^6 \mathcal{G}_{\Gamma_2}}{dx'^6}(x' - x, t, t') - 2 \frac{d^4 \mathcal{G}_{\Gamma_2}}{dx'^4}(x' - x, t, t') + \frac{d^2 \mathcal{G}_{\Gamma_2}}{dx'^2}(x' - x, t, t') \right], \end{aligned} \quad (36)$$

and \mathcal{M}_3 is given by

$$\begin{aligned} \mathcal{M}_3(x, \underline{v}, t, x', t') &= S_{3c} \left[-\frac{d^3}{dx'^3} \mathcal{G}_{\Gamma_2} - 2 \frac{d^4}{dx'^4} \mathcal{G}_{\Gamma_2} - \frac{d^5}{dx'^5} \mathcal{G}_{\Gamma_2} \right] \\ &+ S_{3d} \left[-\frac{d^4}{dx'^4} \mathcal{G}_{\Gamma_2} - \frac{d^5}{dx'^5} \mathcal{G}_{\Gamma_2} \right] \\ &+ \frac{1}{6} S_1^3 \left[-\frac{d^9}{dx'^9} \mathcal{G}_{\Gamma_2} + 3 \frac{d^7}{dx'^7} \mathcal{G}_{\Gamma_2} - 3 \frac{d^5}{dx'^5} \mathcal{G}_{\Gamma_2} + \frac{d^3}{dx'^3} \mathcal{G}_{\Gamma_2} \right] \\ &+ S_1 S_2 \left[-\frac{d^7}{dx'^7} \mathcal{G}_{\Gamma_2} - 2 \frac{d^6}{dx'^6} \mathcal{G}_{\Gamma_2} + \frac{d^5}{dx'^5} \mathcal{G}_{\Gamma_2} + 3 \frac{d^4}{dx'^4} \mathcal{G}_{\Gamma_2} - \frac{d^2}{dx'^2} \mathcal{G}_{\Gamma_2} \right] \\ &+ S_1 S_{2c} \left[-\frac{d^7}{dx'^7} \mathcal{G}_{\Gamma_2} - \frac{d^6}{dx'^6} \mathcal{G}_{\Gamma_2} + \frac{d^5}{dx'^5} \mathcal{G}_{\Gamma_2} + \frac{d^4}{dx'^4} \mathcal{G}_{\Gamma_2} \right]. \end{aligned} \quad (37)$$

In Eq. (37), we have dropped the arguments on the right side to keep the notation simple. Here, Γ_2 , S_1 , S_2 , S_{2c} , S_{3c} and S_{3d} are given in (20), (21), (22), (25), (26) and (27), respectively.

Proof. The proof is based on the expansion in powers of the vols of vols of the function $\mathcal{L}_{\underline{\gamma}}$, and it is available in the Supplementary material online. □

We denote the approximations of the marginal density up to the third order as

$$\begin{aligned} M_0(x, \underline{v}, t, x', t') &= \mathcal{G}_{\Gamma_2}(x' - x, t, t'), \\ M_1(x, \underline{v}, t, x', t') &= \mathcal{G}_{\Gamma_2}(x' - x, t, t') + \mathcal{M}_1(x, \underline{v}, t, x', t'), \\ M_2(x, \underline{v}, t, x', t') &= \mathcal{G}_{\Gamma_2}(x' - x, t, t') \\ &+ \mathcal{M}_1(x, \underline{v}, t, x', t') + \mathcal{M}_2(x, \underline{v}, t, x', t'), \\ M_3(x, \underline{v}, t, x', t') &= \mathcal{G}_{\Gamma_2}(x' - x, t, t') + \mathcal{M}_1(x, \underline{v}, t, x', t') \\ &+ \mathcal{M}_2(x, \underline{v}, t, x', t') + \mathcal{M}_3(x, \underline{v}, t, x', t'). \end{aligned} \quad (38)$$

Proposition 2.5 below shows that the approximations of the marginal density in Eq. (38) satisfy the conditions that guarantee mass conservation, the martingale property (i.e., the asset price should be a martingale in the multi-factor Heston model) and the so-called symmetry condition. These conditions avoid norm-defecting and martingale-defecting pdfs, as discussed in Lewis (2000) Chapter 2.

Proposition 2.5. Let M_0 , M_1 , M_2 and M_3 be given in (38). The following equations then hold

$$\int_{-\infty}^{+\infty} M_l(x, \underline{v}, t, x', t') dx' = 1, \quad l = 0, 1, 2, 3, \quad (39)$$

$$\int_{-\infty}^{+\infty} e^{x'} M_l(x, \underline{v}, t, x', t') dx' = e^x e^{\int_t^{t'} r(s) ds}, \quad l = 0, 1, 2, 3, \quad (40)$$

and

$$\int_{-\infty}^{+\infty} \left(x' - x - \int_t^{t'} r(s) ds + \frac{1}{2} \Gamma_2(t, t') \right) M_l(x, \underline{v}, t, x', t') dx' = 0, \quad l = 0, 1, 2, 3, \quad (41)$$

which represent mass conservation (39), the martingale property (40) and the symmetry condition (41). These properties also hold for the marginal density M in (11).

Proof. See the supplementary material online. □

We conclude this section by emphasizing that Corollary 2.4 shows that the third-order expansion of the marginal density continues to involve only the Gaussian kernel \mathcal{G}_{Γ_2} , confirming that \mathcal{G}_{Γ_2} is the complete Gaussian kernel of the multi-factor Heston model.

In the next section, we use Corollary 2.4 to derive closed-form formulas for the option prices and implied volatility.

3. Applications of the multi-factor Heston kernel approximations

3.1. Option pricing

In this section, we derive explicit formulas for European vanilla call and put options starting from the representation of the multi-factor Heston conditional marginal M provided in Theorem 2.2 and its approximations up to the third order in the vols of vols, given by Eq. (38). The equivalent derivation starting from the representation of the conditional marginal M in terms of the Gaussian kernel \mathcal{G}_{Γ_0} , Eq. (15) is provided in Appendix B.

We use $C(S_0, T, E)$ and $P(S_0, T, E)$ to denote the price of European vanilla call and put options in the multi-factor Heston model, with spot price S_0 , maturity T , strike price E , and discount factor $B(T)$, which is given by

$$B(T) = e^{-\int_0^T r(s) ds}. \quad (42)$$

Specifically, C and P are defined as:

$$C(S_0, T, E) = B(T) \int_{\log E}^{+\infty} (e^{x'} - E) M(\log S_0, \underline{v}_0, 0, x', T) dx', \quad (43)$$

and

$$P(S_0, T, E) = B(T) \int_{-\infty}^{\log E} (E - e^{x'}) M(\log S_0, \underline{v}_0, 0, x', T) dx', \quad (44)$$

where \underline{v}_0 is a vector of the variances at time $t = 0$.

Furthermore, we use $C_{BS}(S_0, T, E, \sqrt{\frac{\Gamma}{T}})$ and $P_{BS}(S_0, T, E, \sqrt{\frac{\Gamma}{T}})$ to denote the classic Black–Scholes formulas for vanilla call and put options, where $\Gamma = \Gamma(0, T) > 0$ is the integrated variance over the time interval $[0, T]$, that is,

$$C_{BS} \left(S_0, T, E, \sqrt{\frac{\Gamma}{T}} \right) = S_0 N(d_1(\Gamma)) - E e^{-\int_0^T r(s) ds} N(d_2(\Gamma)), \quad (45)$$

and

$$P_{BS} \left(S_0, T, E, \sqrt{\frac{\Gamma}{T}} \right) = -S_0 N(-d_1(\Gamma)) + E e^{-\int_0^T r(s) ds} N(-d_2(\Gamma)), \quad (46)$$

where $N(x)$ is given by

$$N(x) = \frac{1}{\sqrt{2\pi}} \int_{-\infty}^x e^{-y^2/2} dy, \tag{47}$$

and $d_1(\Gamma)$ and $d_2(\Gamma)$ are given by

$$d_1(\Gamma) = \frac{\log\left(\frac{S_0}{E}\right) + \int_0^T r(s)ds + \frac{1}{2}\Gamma}{\sqrt{\Gamma}}, \tag{48}$$

$$d_2(\Gamma) = d_1(\Gamma) - \sqrt{\Gamma} = \frac{\log\left(\frac{S_0}{E}\right) + \int_0^T r(s)ds - \frac{1}{2}\Gamma}{\sqrt{\Gamma}}. \tag{49}$$

Proposition 3.1. Let $C(S_0, T, E)$ and $P(S_0, T, E)$ be the prices of European call and put options, respectively, with spot price S_0 , maturity T , strike price E and discount factor $B(T)$, as given in Eqs. (43)–(44). We have

$$\begin{aligned} C(S_0, T, E) &= C_{BS}\left(S_0, T, E, \sqrt{\frac{\Gamma_2}{T}}\right) + \mathcal{R}_1(S_0, T, E) + \mathcal{R}_2(S_0, T, E) \\ &\quad + \mathcal{R}_3(S_0, T, E) + o(\|\underline{\gamma}\|^3), \\ \|\underline{\gamma}\| &\rightarrow 0, \end{aligned} \tag{50}$$

and

$$\begin{aligned} P(S_0, T, E) &= P_{BS}\left(S_0, T, E, \sqrt{\frac{\Gamma_2}{T}}\right) + \mathcal{R}_1(S_0, T, E) + \mathcal{R}_2(S_0, T, E) \\ &\quad + \mathcal{R}_3(S_0, T, E) + o(\|\underline{\gamma}\|^3), \\ \|\underline{\gamma}\| &\rightarrow 0. \end{aligned} \tag{51}$$

Here, $\Gamma_2(0, T)$ is given by (20), C_{BS} and P_{BS} denote the classic Black–Scholes formulas in (45) and (46), and \mathcal{R}_1 , \mathcal{R}_2 and \mathcal{R}_3 are corrections to the standard Black–Scholes formula due to the contribution of the first-, second-, and third-order correction terms of the expansion in powers of the vols of vols of the function $\mathcal{L}_{\underline{\gamma}}^*$ (see, Eq. (19)):

$$\mathcal{R}_1(S_0, T, E) = S_1(0, T)B(T)E \left[-\frac{d\mathcal{G}_{\Gamma_2}}{dx'} + \mathcal{G}_{\Gamma_2} \right] (\log(E/S_0), 0, T) \tag{52}$$

$$\begin{aligned} \mathcal{R}_2(S_0, T, E) &= S_2(0, T)B(T)E \left[\frac{d^2\mathcal{G}_{\Gamma_2}}{dx'^2} + \frac{d\mathcal{G}_{\Gamma_2}}{dx'} - \mathcal{G}_{\Gamma_2} \right] \\ &\quad \times (\log(E/S_0), 0, T) + S_{2c}(0, T)B(T)E \frac{d^2\mathcal{G}_{\Gamma_2}}{dx'^2} (\log(E/S_0), 0, T) \\ &\quad + \frac{1}{2}S_1^2(0, T)B(T)E \left[\frac{d^4\mathcal{G}_{\Gamma_2}}{dx'^4} - \frac{d^3\mathcal{G}_{\Gamma_2}}{dx'^3} - \frac{d^2\mathcal{G}_{\Gamma_2}}{dx'^2} + \frac{d\mathcal{G}_{\Gamma_2}}{dx'} \right] (\log(E/S_0), 0, T), \end{aligned} \tag{53}$$

and

$$\begin{aligned} \mathcal{R}_3(S_0, T, E) &= S_{3c}(0, T)B(T)E \left[-\frac{d^3\mathcal{G}_{\Gamma_2}}{dx'^3} - \frac{d^2\mathcal{G}_{\Gamma_2}}{dx'^2} \right] (\log(E/S_0), 0, T) \\ &\quad - S_{3d}(0, T)B(T)E \frac{d^3\mathcal{G}_{\Gamma_2}}{dx'^3} (\log(E/S_0), 0, T) + S_1(0, T)S_{2c}(0, T)B(T)E \\ &\quad \times \left[-\frac{d^5\mathcal{G}_{\Gamma_2}}{dx'^5} + \frac{d^3\mathcal{G}_{\Gamma_2}}{dx'^3} \right] (\log(E/S_0), 0, T) \\ &\quad + \frac{1}{6}S_1^3(0, T)B(T)E \\ &\quad \times \left[-\frac{d^7\mathcal{G}_{\Gamma_2}}{dx'^7} + \frac{d^6\mathcal{G}_{\Gamma_2}}{dx'^6} + 2\frac{d^5\mathcal{G}_{\Gamma_2}}{dx'^5} - 2\frac{d^4\mathcal{G}_{\Gamma_2}}{dx'^4} - \frac{d^3\mathcal{G}_{\Gamma_2}}{dx'^3} + \frac{d^2\mathcal{G}_{\Gamma_2}}{dx'^2} \right] \\ &\quad \times (\log(E/S_0), 0, T) \end{aligned}$$

$$\begin{aligned} &+ S_1(0, T)S_2(0, T)B(T)E \\ &\times \left[-\frac{d^5\mathcal{G}_{\Gamma_2}}{dx'^5} - \frac{d^4\mathcal{G}_{\Gamma_2}}{dx'^4} + 2\frac{d^3\mathcal{G}_{\Gamma_2}}{dx'^3} + \frac{d^2\mathcal{G}_{\Gamma_2}}{dx'^2} - \frac{d\mathcal{G}_{\Gamma_2}}{dx'} \right] (\log(E/S_0), 0, T), \end{aligned} \tag{54}$$

where S_1 , S_2 , S_{2c} , S_{3c} and S_{3d} are given in (21), (22), (25), (26) and (27), respectively. The notation $[\cdot](\cdot, \cdot, \cdot)$ in Eq. (53) and Eq. (54) means that the function in the square brackets is evaluated at the argument (\cdot, \cdot, \cdot) .

Note that for $\underline{\gamma} = \mathbf{0}$, \mathcal{G}_{Γ_2} coincides with \mathcal{G}_{Γ_0} , the correction terms \mathcal{R}_1 , \mathcal{R}_2 and \mathcal{R}_3 become zero, and the option prices become the classic Black and Scholes prices for options with time-dependent but deterministic volatilities.

Dropping the arguments of Γ_2 , S_1 , S_2 and S_{2c} , Eqs. (52), (53) can be rewritten as

$$\mathcal{R}_1(S_0, T, E) = \frac{\text{Vega}(\Gamma_2)}{\sqrt{T}\Gamma_2^{3/2}} S_1 \left(m_E + \frac{3}{2}\Gamma_2 \right), \tag{55}$$

$$\begin{aligned} \mathcal{R}_2(S_0, T, E) &= +S_{2c} \frac{\text{Vega}(\Gamma_2)}{\sqrt{T}\Gamma_2^{3/2}} \left[\frac{(m_E + \frac{1}{2}\Gamma_2)^2}{\Gamma_2} - 1 \right] \\ &\quad + S_2 \frac{\text{Vega}(\Gamma_2)}{\sqrt{T}\Gamma_2^{3/2}} \left[\frac{(m_E + \frac{1}{2}\Gamma_2)^2}{\Gamma_2} - (m_E + \frac{1}{2}\Gamma_2) - 1 - \Gamma_2 \right] \\ &\quad + \frac{1}{2}S_1^2 \frac{\text{Vega}(\Gamma_2)}{\sqrt{T}\Gamma_2^{3/2}} \left[\frac{(m_E + \frac{1}{2}\Gamma_2)^4}{\Gamma_2^3} + \frac{(m_E + \frac{1}{2}\Gamma_2)^3}{\Gamma_2^2} \right. \\ &\quad \left. - \frac{(m_E + \frac{1}{2}\Gamma_2)^2}{\Gamma_2} \left(1 + \frac{6}{\Gamma_2} \right) \right] \\ &\quad + \frac{1}{2}S_1^3 \frac{\text{Vega}(\Gamma_2)}{\sqrt{T}\Gamma_2^{3/2}} \left[-\left(m_E + \frac{1}{2}\Gamma_2 \right) \left(1 + \frac{3}{\Gamma_2} \right) + \left(1 + \frac{3}{\Gamma_2} \right) \right], \end{aligned} \tag{56}$$

where m_E is the log-moneyness associated with the forward price defined as

$$m_E = \log \left(\frac{E}{S_0 e^{\int_0^T r(s)ds}} \right), \tag{57}$$

and the Black–Scholes Vega is $\text{Vega}(\Gamma_2) = \sqrt{T}Ee^{-\int_0^T r(s)ds}N'(d_2(\Gamma_2))$ with $d_2(\Gamma_2) = -(m_E + \frac{1}{2}\Gamma_2)/\sqrt{\Gamma_2}$.

Proof. See Appendix A. \square

We denote the approximated European vanilla option prices up to the the first-, second- and third-order approximations as

$$\begin{aligned} C_m(S_0, T, E) &= C_{BS}\left(S_0, T, E, \sqrt{\frac{\Gamma_2}{T}}\right) \\ &\quad + \sum_{i=1}^m \mathcal{R}_i(S_0, T, E), \quad m = 1, 2, 3, \end{aligned} \tag{58}$$

$$\begin{aligned} P_m(S_0, T, E) &= P_{BS}\left(S_0, T, E, \sqrt{\frac{\Gamma_2}{T}}\right) \\ &\quad + \sum_{i=1}^m \mathcal{R}_i(S_0, T, E), \quad m = 1, 2, 3. \end{aligned} \tag{59}$$

Notably:

- (i) Proceeding further with the expansion of the function $\mathcal{L}_{\underline{\gamma}}^*$ in the powers of the vols of vols, we can only add higher-order corrections to the option price approximations without affecting the zero-order contribution. The Black–Scholes-type term is, in fact, determined by the Gaussian kernel \mathcal{G}_{Γ_2} , which is not affected by higher-order expansions in $\underline{\gamma}$ of $\mathcal{L}_{\underline{\gamma}}^*$.

- (ii) When the vols of vols go to zero, the option prices converge to the Black–Scholes-like term with volatility $\sqrt{\Gamma_0(0, T)}/T$.
- (iii) The Black–Scholes-type formulas for the European vanilla options (that is, the zero-order approximations) overprice at-the-money options. The first-order correction term \mathcal{R}_1 , which affects the call and put options in the same way, can correct for this overpricing. In fact, \mathcal{R}_1 is negative when the options are at-the-money (i.e., $E/(S_0 e^{\int_0^T r(s) ds}) \approx 1$) and the correlations are negative. This finding indicates that in the case of the Heston model, where negative correlation values are usually observed, the prices of call and put options are smaller than those calculated using the standard Black–Scholes formulas for at-the-money options, thereby reducing the overpricing of the Black–Scholes formulas.
- (iv) The correction term, \mathcal{R}_1 , shows why S_1 may be deemed responsible for the smile asymmetry. We observe zero price skewness (33) when $\rho_j = 0$, $j = 1, 2, \dots, n$. Indeed, zero correlation implies a null third-order correction to option pricing, indicating the crucial effect of non-null correlations.
- (v) The correction terms \mathcal{R}_m , $m = 1, 2, 3$ are the same for the call and put options. As a consequence, the pairs C_m, P_m , $m = 1, 2, 3$, satisfy the put-call parity. In fact, $C_m - P_m = C_{BS}(S_0, T, E, \frac{\sqrt{\Gamma_2}}{\sqrt{T}}) - P_{BS}(S_0, T, E, \frac{\sqrt{\Gamma_2}}{\sqrt{T}}) = S_0 - Ee^{\int_0^T r(s) ds}$, $m = 1, 2, 3$. The fact that the put-call parity holds is implied by the fact that the Fourier transforms of $\mathcal{M}_1, \mathcal{M}_2$ and \mathcal{M}_3 with respect to the log-price are equal to zero when the conjugate variable is equal to zero and to the imaginary unit (see Section 8 of the online supplementary material.)
- (vi) The correction terms \mathcal{R}_m , $m = 1, 2, 3$, are linear in the Vega of the Black–Scholes formulas (see Eqs. (55) and (131)). Thus, small values of Vega imply small corrections. Note that for large values of γ_j , the Vega goes to zero as $e^{-\Gamma_2/8}$. Thus, for large values of γ_j , the second- and third-order approximations of the option prices move toward the Black–Scholes-like term with volatility $\sqrt{\Gamma_2(0, T)}/T$. A higher-order approximation is needed in this case to capture non-zero correction terms. In Section 4.1, we numerically determine the range of values of γ that are coherent with expansion to the third order.
- (vii) Theorem 2.2 implies that any contract with maturity T and payoff \mathcal{P} that allows for a closed or semi-closed form in the Black–Scholes framework can be written as a convolution of the Black–Scholes price with integrated variance $\Gamma_2(0, T)$ and the function \mathcal{L}^* . Using the expansion in powers of the vols of vols of the Fourier transform of \mathcal{L}^* , which implies a representation of \mathcal{L}^* as a weighted sum of the derivatives of the Dirac delta function of the log-price, we obtain an expansion of the contract price given by the Black–Scholes price at zero order plus corrections at higher orders given by the Black–Scholes Greeks⁵. Moreover, the current representation shows that the corrections to the Black–Scholes term are equal for the put and call options, at any order of approximation, implying that the put-call parity equation is satisfied at any order of approximation.

3.2. Implied volatility

The implied volatility Σ in the multi-factor Heston model is defined as the quantity such that the following equality holds:

$$C_{BS}\left(S_0, T, E, \sqrt{\frac{\Sigma^2}{T}}\right) = C(S_0, T, E). \tag{60}$$

⁵ The expansion of \mathcal{L}^* and call option prices as the Black–Scholes prices plus Greeks are found in Section 8 of the online Supplementary material.

We derive the first- and second-order approximations of Σ as a function of the vols of vols (i.e., $\Sigma = \Sigma(\underline{\gamma})$) by solving

$$\begin{aligned} C_{BS}\left(S_0, T, E, \sqrt{\frac{\Sigma_m^2(\underline{\gamma})}{T}}\right) \\ = C_{BS}\left(S_0, T, E, \sqrt{\frac{\Gamma_2}{T}}\right) + \mathcal{R}_m(S_0, T, E), \quad m = 1, 2. \end{aligned} \tag{61}$$

Proposition 3.2. *The first-order, $\Sigma_1(\underline{\gamma})$, and second-order, $\Sigma_2(\underline{\gamma})$, approximations are given by*

$$\begin{aligned} \Sigma_1(\underline{\gamma}) \\ = \sqrt{\Gamma_0} + \frac{S_1}{\Gamma_0 \sqrt{\Gamma_0}} \left(m_E + \frac{1}{2} \Gamma_0\right), \end{aligned} \tag{62}$$

$$\begin{aligned} \Sigma_2(\underline{\gamma}) = \sqrt{\Gamma_0} + \sqrt{\Gamma_0} \\ \times \left[a_0(T, \underline{\gamma}) + a_1(T, \underline{\gamma}) \left(m_E + \frac{1}{2} \Gamma_0\right) + a_2(T, \underline{\gamma}) \left(m_E + \frac{1}{2} \Gamma_0\right)^2 \right]. \end{aligned} \tag{63}$$

Here, m_E is the log-moneyness associated with the forward price (see Eq. (57)), Γ_0 and S_1 are defined in (16) and $a_0(T, \underline{\gamma})$, $a_1(T, \underline{\gamma})$ and $a_2(T, \underline{\gamma})$ are given by

$$a_0(T, \underline{\gamma}) = \left[\frac{3}{2} \frac{1}{\Gamma_0^3} S_1^2 - \frac{(S_2 + S_{2c})}{\Gamma_0^2} \right], \tag{64}$$

$$a_1(T, \underline{\gamma}) = \left[\frac{(S_1 - S_2)}{\Gamma_0^2} + \frac{3}{2} \frac{1}{\Gamma_0^3} S_1^2 \right], \tag{65}$$

and

$$a_2(T, \underline{\gamma}) = \frac{1}{\Gamma_0} \left[\frac{(S_2 + S_{2c})}{\Gamma_0^2} - \frac{3}{\Gamma_0^3} S_1^2 \right]. \tag{66}$$

with S_2 and S_{2c} given in (22), (25), respectively. Here, we have dropped the arguments $(0, T)$ of the functions Γ_0, S_1, S_2 and S_{2c} .

Proof. See Appendix A. \square

The fact that the implied volatility expansion depends only on Γ_0 and not on Γ_2 is a consequence of the choice of $\underline{\gamma} = \underline{0}$ as a base point of the Taylor expansion of the implied volatility. In fact, the same formula for the implied volatility can be derived using the second-order approximation to the call option price based on the Gaussian kernel \mathcal{G}_{Γ_0} . A suitable double expansion would allow a similar formula to be obtained for the implied volatility, with Γ_0 replaced by Γ_2 . This approach, however, is not reported in this paper, as it deserves further investigation.

Notably, the implied volatility resulting from the second-order approximation to the option price is a quadratic function of the forward moneyness and reduces to the approximation of Bergomi and Guyon (2011) in the case of the Heston model. The coefficients $a_0(T, \underline{\gamma})$ and $a_2(T, \underline{\gamma})$ are second-degree homogeneous functions of $\underline{\gamma}$, while $a_1(T, \underline{\gamma})$ is a homogeneous function of degree one.

Interestingly, by considering formula (63) as a function of $m_E + \Gamma_0/2 = \log(E/S_0 e^{T-\Gamma_0/2})$, we can derive an explicit dependence of the level, $a_0(T, \underline{\gamma})$, and convexity, $a_2(T, \underline{\gamma})$, on the price skewness (given in Eq. (33)), that is:

$$a_0(T, \underline{\gamma}) = -a_2(T, \underline{\gamma}) \Gamma_0 - \frac{1}{24} \text{Skewness}_{DS}^2, \tag{67}$$

and

$$a_2(T, \underline{\gamma}) = \frac{1}{\Gamma_0} \left[\frac{(S_2 + S_{2c})}{\Gamma_0^2} - \frac{1}{12} \text{Skewness}_{DS}^2 \right]. \tag{68}$$

The expression of a_2 reveals that the convexity of the volatility smile depends on the function S_1^2 . This finding confirms that the quantity S_1 is responsible for the asymmetry in the smile since it allows for a concave smile. Bearing in mind that Γ_0 , S_2 and S_{2c} are non-negative for any time horizon and model parameters, Eq. (68) clearly shows the effect of price skewness on the volatility smile, i.e., large values of price skewness can destroy the U shape of implied volatility. Indeed, concave volatility smiles are allowed in mean-reverting underlying assets, where the option tenor is comparable to the characteristic reversion time of the asset⁶.

The second-order approximation of the implied volatility leads to the following approximation for the implied volatility skew:

$$\begin{aligned}
 IV_{skew}(T) &= \left| \frac{\partial}{\partial m_E} \Sigma_2 \right|_{m_E=0} = \sqrt{\Gamma_0} (a_1(T, \underline{\gamma}) + \Gamma_0 a_2(T, \underline{\gamma})) \\
 &= \sqrt{\Gamma_0} \left| \frac{(S_1 + S_{2c})}{\Gamma_0^2} - \frac{1}{24} Skewness_{DS}^2 \right| \\
 &= \sqrt{\Gamma_0} \left| \frac{1}{\Gamma_0^2} \left(\frac{1}{2} E_t(X_T Y_T) + \frac{1}{4} E_t(X_T^2 Y_T) - \frac{1}{4} E_t(Y_T^2) \right) \right. \\
 &\quad \left. - \frac{1}{24} Skewness_{DS}^2 \right|. \tag{69}
 \end{aligned}$$

For null correlation coefficients $S_1 = 0$, $S_{2c} = 0$, and $IV_{skew} = 0$, the second-order approximation, Σ_2 , of the volatility surface is a strictly convex function with vertex at $m_E = 0$ (i.e., when the option is at the money):

$$\Sigma_2(\underline{\gamma}) = \sqrt{\Gamma_0} + \frac{S_2}{\Gamma_0 \sqrt{\Gamma_0}} \left[\frac{1}{\Gamma_0} \left(m_E + \frac{1}{2} \Gamma_0 \right)^2 - \left(m_E + \frac{1}{2} \Gamma_0 \right) - 1 \right]. \tag{70}$$

Finally, a simple calculation proves that the implied volatility skew decays according to $1/\sqrt{T}$ as $T \rightarrow +\infty$ since we have

$$\begin{aligned}
 \lim_{T \rightarrow +\infty} \frac{\Gamma_0(0, T)}{T} &= \sum_{j=1}^n v_j^*, \quad \lim_{T \rightarrow +\infty} \frac{S_1(0, T)}{T} = \sum_{j=1}^n \frac{\rho_j \gamma_j}{2 \chi_j} v_j^*, \\
 \lim_{T \rightarrow +\infty} \frac{S_{2c}(0, T)}{T} &= \sum_{j=1}^n \frac{\gamma_j^2 \rho_j^2}{2 \chi_j} \frac{v_j^*}{\chi_j}.
 \end{aligned}$$

Therefore, we obtain

$$\begin{aligned}
 \lim_{T \rightarrow +\infty} IV_{skew}(T) &= \frac{1}{\sqrt{T} \left(\sum_{j=1}^n v_j^* \right)} \left[\sum_{j=1}^n \hat{v}_j \left(\frac{\rho_j \gamma_j}{2 \chi_j} + \frac{\rho_j^2 \gamma_j^2}{2 \chi_j^2} \right) - \frac{1}{24} \left(\sum_{j=1}^n \hat{v}_j \frac{\rho_j \gamma_j}{2 \chi_j} \right)^2 \right], \tag{71}
 \end{aligned}$$

where $\hat{v}_j^* = v_j^* / \sum_{i=1}^n v_i^*$ is the weight of the j th long-term variance mean. The limit for large maturity shows that, in the multi-factor Heston model, the interaction between the variances plays a crucial role in the implied volatility skew (see the squared term on the right-hand side of Eq. (71)), as previously observed in Veng et al. (2019).

3.3. The VIX index

The VIX volatility index, disseminated by the Chicago Board Options Exchange (CBOE), is built to provide a model-free, option-implied, return volatility measure for the S&P 500 index. The

CBOE⁷ computes the VIX from non-zero bid prices of European call and put options on the S&P 500 index using the formula

$$\left(\frac{VIX}{100} \right)^2 = \frac{2}{T} \sum_i \frac{\Delta E_i}{E_i^2} e^{rT} Q(E_i) - \frac{1}{T} \left[\frac{F_{0,T}}{E_0} - 1 \right]^2, \tag{72}$$

where T is 30-day maturity, E_i is the strike of the i th out-of-the-money option, $F_{t,t+\tau} = S_t e^{r\tau}$ is the forward index quotation with constant interest rate, $S_t = e^{xt}$ is the price at t , and E_0 is the first strike below the forward index level. The quantity $Q(E_i)$ is the midpoint of the bid-ask spread of each option with strike E_i .

This definition is based on the following representation of the expected value of the future realized variance, given by Demeterfi, Derman, Kamal, and Zou (1999):

$$\begin{aligned}
 E_0 \left[\int_0^T v_t dt \right] &= 2 \left[rT - \left(\frac{F_{0,T}}{E_0} - 1 \right) - \ln \left(\frac{E_0}{S_0} \right) \right. \\
 &\quad \left. + e^{rT} \int_0^{E_0} \frac{P_0(S_0, T, E)}{E^2} dE + e^{rT} \int_{E_0}^{\infty} \frac{C_0(S_0, T, E)}{E^2} dE \right], \tag{73}
 \end{aligned}$$

where P and C are put and call prices. Eq. (73) can then be rewritten (see Zhang et al., 2010) via a second-order Taylor approximation of the log function for $E_0 \sim F_{0,T}$ as:

$$\begin{aligned}
 \left(\frac{VIX_{0,T}}{100} \right)^2 &= \frac{2e^{rT}}{T} \left[\int_0^{E_0} \frac{1}{E^2} P(S_0, T, E) dE \right. \\
 &\quad \left. + \int_{E_0}^{+\infty} \frac{1}{E^2} C(S_0, T, E) dE \right] - \frac{1}{T} \left[\frac{F_{0,T}}{E_0} - 1 \right]^2. \tag{74}
 \end{aligned}$$

Jiang and Tian (2005, 2007) discuss the potential biases that can arise from approximating (74) with (72) such as (i) truncation errors (the minimum and maximum strikes are far from zero and infinity in practice); (ii) discretization errors (piecewise linear functions approximate the integrals in equation); (iii) expansion errors (the Taylor series expansion is truncated to the second order); and (iv) interpolation errors (linear interpolation of the maturities). In fact, a number of empirical studies indicate that the VIX overestimates the future volatility of the underlying assets. To improve the fit between the VIX index and the volatility of the underlying assets, Pacati, Renó, and Pompa (2018) proposed a new specification in the double Heston model that leads to a deterministic non-negative shift, or displacement ϕ_t , of the stochastic volatility level such that:

$$\left(\frac{VIX_{0,T}}{100} \right)^2 = \frac{\Gamma_0(0, T)}{T} + \frac{\int_0^T \phi_s ds}{T}. \tag{75}$$

Here, we take a different approach and show that the squared VIX can be associated with both Γ_0 and Γ_2 , which in our framework, are both candidates for the implied volatility. In fact, by taking the zero-order approximation in Eq. (60), i.e., only the Black-Scholes term, it is trivial to derive $\Sigma_0(\underline{\gamma}) = \sqrt{\Gamma_2}$. Similarly, if we expand the option price formulas around the Gaussian kernel G_{Γ_0} , we find $\Sigma_0(\underline{\gamma}) = \sqrt{\Gamma_0}$ at the zero order.

To derive the link between the VIX, Γ_0 and Γ_2 , we use different approximations of Eq. (74). The starting point in both cases is to replace the following identities:

$$\int_0^{E_0} \frac{1}{E^2} P(S_0, T, E) dE = e^{-rT} \int_0^{E_0} f(S) \left[\log(E_0/S) + \frac{S}{E_0} - 1 \right] dS, \tag{76}$$

⁶ Some empirical evidence can be found at <http://faculty.baruch.cuny.edu/jgatheral/Bachelier2008.pdf> (see pages 53–56).

⁷ See the CBOE white paper at <http://www.cboe.com/micro/vix/vixwhite.pdf>

$$\int_{E_0}^{+\infty} \frac{1}{E^2} C(S_0, T, E) dE = e^{-rT} \int_{E_0}^{+\infty} f(S) \left[\log(E_0/S) + \frac{S}{E_0} - 1 \right] dS. \tag{77}$$

Here, to maintain simple notation, $f(S)$ denotes the price density. Using (76) and (77) in Eq. (74), we obtain:

$$\left(\frac{VIX_{0,T}}{100} \right)^2 = \frac{2}{T} \left[-E(\log(S_T/E_0) | \mathcal{F}_0) + E\left(\frac{S_T}{E_0} - 1 | \mathcal{F}_0\right) \right] + \frac{1}{T} \left[\frac{F_{0,T}}{E_0} - 1 \right]^2. \tag{78}$$

Remark 3.3. $VIX^2 \propto \Gamma_0(0, T)$

To derive the relationship between the VIX and Γ_0 , we use the following expansion (see Zhang et al., 2010):

$$\log\left(\frac{F_{0,T}}{E_0}\right) = \left(\frac{F_{0,T}}{E_0} - 1\right) - \frac{1}{2}\left(\frac{F_{0,T}}{E_0} - 1\right)^2 + O\left[\left(\frac{F_{0,T}}{E_0} - 1\right)^3\right]. \tag{79}$$

In fact, neglecting the third- and higher-order terms in Eq. (79) and replacing the expansion of the second term of the right-hand side of Eq. (78), we obtain

$$\left(\frac{VIX_{0,T}}{100} \right)^2 = \frac{2}{T} \left[-E(\log(S_T/E_0) | \mathcal{F}_0) + E\left(\frac{S_T}{E_0} - 1 | \mathcal{F}_0\right) \right] + \frac{2}{T} \left[\log\left(\frac{F_{0,T}}{E_0}\right) - \left(\frac{F_{0,T}}{E_0} - 1\right) \right]. \tag{80}$$

Assuming a constant risk-free interest rate, we have $F_{0,T} = E(S_T | \mathcal{F}_0) = S_0 e^{rT}$, while considering that $E\left(\log\left(\frac{S_T}{S_0}\right) | \mathcal{F}_0\right) = rT - \frac{1}{2} \sum_{j=1}^n \int_0^T E(v_{j,s} | \mathcal{F}_0) ds$, we obtain:

$$\left(\frac{VIX_{0,T}}{100} \right)^2 = \frac{2}{T} \left[-E\left(\log\left(\frac{S_T}{E_0}\right) | \mathcal{F}_0\right) + \log\left(\frac{F_{0,T}}{E_0}\right) \right] = \frac{2}{T} \left[-E\left(\log\left(\frac{S_T}{S_0}\right) | \mathcal{F}_0\right) + rT \right] = \frac{\Gamma_0(0, T)}{T}. \tag{81}$$

Note that the recent paper by Huang, Schlag, Shaliastovich, and Thimme (2020), which proposes a stochastic volatility model with stochastic vols of vols, reports a similar result. The squared VIX, in fact, is shown by the authors to be equal to the conditional mean of the integrated variance, which, as in our model, coincides with Γ_0 .

Remark 3.4. $VIX^2 \propto \Gamma_2(0, T)$

To derive the relationship between the VIX and Γ_2 , we first use the following Taylor expansion

$$\log\left(\frac{S}{E_0}\right) = \left(\frac{S}{E_0} - 1\right) - \frac{1}{2}\left(\frac{S}{E_0} - 1\right)^2 + O\left[\left(\frac{S}{E_0} - 1\right)^3\right], \quad S \rightarrow E_0,$$

on the right-hand side of Eqs. (76)–(77), then the expansion of S_T/E_0 around the conditional mean, denoted by $E(S_T/E_0) = E(S_T/E_0 | \mathcal{F}_0)$ for simplicity:

$$\log\left(\frac{S_T}{E_0}\right) \approx \log\left(E\left(\frac{S_T}{E_0}\right)\right) + \frac{1}{E\left(\frac{S_T}{E_0}\right)} \left[\frac{S_T}{E_0} - E\left(\frac{S_T}{E_0}\right) \right]. \tag{82}$$

Therefore, we first have

$$\left(\frac{VIX_{0,T}}{100} \right)^2 = \frac{1}{T} \int_0^{+\infty} f(S) \left(\frac{S}{E_0} - 1\right)^2 dS - \frac{1}{T} \left[E\left(\frac{S_T}{E_0} - 1 | \mathcal{F}_0\right) \right]^2 = \frac{1}{T} \text{Var}\left(\frac{S_T}{E_0} | \mathcal{F}_0\right), \tag{83}$$

where Var is the variance. Taking the variance of Eq. (82), we obtain:

$$\begin{aligned} \left(\frac{VIX_{0,T}}{100} \right)^2 &= \frac{1}{T} \left(E\left(\frac{S_T}{E_0}\right) \right)^2 \text{Var}\left(\log\left(\frac{S_T}{E_0}\right) | \mathcal{F}_0\right) \\ &= \frac{1}{T} \left(\frac{F_{0,T}}{E_0}\right)^2 \text{Var}\left(\log\left(\frac{S_T}{S_0}\right) | \mathcal{F}_0\right) = \frac{\Gamma_2(0, T)}{T} \left(\frac{F_{0,T}}{E_0}\right)^2. \end{aligned} \tag{84}$$

Thus, when E_0 is very close to $F_{0,T}$, as in the CBOE computation, $\Gamma_2(0, T)/T$ is a proxy for $VIX^2/100$. This formula is in line with Theorem 1 from Chow, Jiang, and Li (2020). Note that the variance is computed in the risk-neutral measure.

This finding suggests that the VIX index typically overestimates the conditional mean of the integrated spot volatility (given that normally $\Gamma_2 > \Gamma_0$, as the correlation ρ_j between prices and volatility is typically negative), and our analysis is in line with the results of Pacati et al. (2018). In fact, our derivation provides an interpretation of the displacement parameter in Pacati et al. (2018) implying that $\frac{\int_0^T \phi_s}{T} = 2(S_2(0, T) - S_1(0, T))$.

Our analysis, not only provides an explanation for the bias between the VIX and the conditional mean of the integrated spot volatility but also offers a theoretical foundation for recently proposed methods to compute the variance risk premium (VRP). Zhao et al. (2013) provide a natural definition of the variance risk premium, expressing it as the difference between the variances of the continuously compounded returns evaluated in the risk-neutral scenario and in the physical probability measures. In our framework, the variance risk premium for the multi-factor Heston model can be expressed as

$$VRP = \Gamma_2^Q - \Gamma_2^P, \tag{85}$$

where Q and P denote, respectively, the risk-neutral and physical probability measures (here Γ_2^Q is the same quantity denoted earlier as Γ_2). In fact, as discussed above, Γ_2^Q and Γ_2^P , which are the variances of the Gaussian kernel underlying the price process in the risk-neutral and physical measures, coincide with the variances of the continuously compounded returns under the same two measures. Bon Bondarenko (2014), Bollerslev, Tauchen, and Zhou (2009), and Carr and Wu (2009) have proposed constructing the volatility risk premium based on the assumption that model-free option-implied volatility measures can provide a natural empirical analog to the market’s risk-neutral expectation of the conditional total variation of returns. These authors had the correct intuition to use the VIX index as a proxy of the risk-neutral variance of returns, and by deriving this link explicitly, via Γ_2 , we provide a theoretical justification for this approach.

Finally, we note that our results imply a nonlinear effect of the vols-of-vols risk on the VIX index, given that Γ_2 is a quadratic function of the vols-of-vols parameters. Huang et al. (2020) also uncovered a nonlinear effect of the vols-of-vols risk on VIX options.

4. Accuracy of the option price approximations: simulation study

In this section, we study the accuracy of the approximation formulas derived in Sections 2 and 3 in reproducing European option prices and their performance in terms of computational time. As a benchmark, we compute the “true” European option prices by following the approach proposed in Recchioni and Sun (2016) (derivations are reported in Appendix C).

In the following, we use the subscripts “H”, “DH” and “TH” to denote option prices and their approximations in the Heston, double Heston and triple Heston frameworks.

Table 1
Descriptive statistics for the exact call and put option prices evaluated on grid \mathcal{M} of the Heston model.

γ	Average call price	min call	max call	Average put price	min put	max put
0.01	32.292	14.337	56.822	31.101	10.081	64.549
0.05	31.846	14.294	56.847	30.655	10.091	64.567
0.1	31.908	14.193	57.206	30.717	10.166	64.997
0.25	32.116	14.102	57.970	30.925	10.242	65.958
0.5	33.211	13.925	61.368	32.020	10.338	70.310
0.8	35.390	13.807	67.253	34.199	10.526	77.262
2.0	47.997	14.392	89.417	46.806	12.010	107.451

Table 2
Descriptive statistics for the relative errors of second- and third-order option price approximations evaluated on grid \mathcal{M} in the case of the Heston model.

Second-order approximations in vols of vols ($C_{2,H}, P_{2,H}$)						
γ	mean _c	median _c	std _c	mean _p	median _p	std _p
0.01	2.7090e-9	0.000	8.7598e-8	2.3767e-9	0.000	7.1053e-8
0.05	3.3058e-7	0.000	9.9919e-7	2.9665e-7	0.000	9.1210e-7
0.15	8.6177e-6	2.9231e-6	1.9097e-5	8.0870e-6	2.8545e-6	1.6523e-5
0.25	3.9080e-5	8.7593e-6	8.5551e-5	3.6756e-6	9.2254e-6	7.4764e-5
0.5	2.8757e-4	6.0871e-5	6.1026e-4	2.7410e-4	6.5693e-5	5.5215e-4
0.8	1.0428e-3	2.3942e-4	2.1199e-3	1.0099e-3	2.4380e-4	1.9904e-3
2.0	1.0785e-2	3.4351e-3	1.8412e-2	1.0854e-2	3.3176e-3	1.8488e-2
Third-order approximations in vols of vols ($C_{3,H}, P_{3,H}$)						
γ	mean _c	median _c	std _c	mean _p	median _p	std _p
0.01	4.5346e-10	0.000	3.3345e-8	9.2518e-10	0.000	4.7762e-8
0.05	1.1567e-7	0.000	6.1056e-7	1.0622e-7	0.000	5.5577e-7
0.15	3.0780e-6	0.000	5.3205e-6	2.8741e-6	0.000	4.9957e-6
0.25	1.2798e-5	4.5284e-6	2.0294e-5	1.2180e-5	5.3118e-6	1.9446e-5
0.5	8.0037e-5	3.4110e-5	1.0768e-4	7.8271e-5	3.6047e-5	1.0436e-4
0.8	2.8491e-4	1.1447e-4	4.0639e-4	2.8161e-4	1.2737e-4	3.6937e-4
2.0	4.0807e-3	7.8427e-4	8.8272e-3	4.1534e-3	8.4030e-4	8.7858e-3

4.1. Simulation study 1: Heston and double Heston on “reasonable” grid of parameters

We begin this section by assessing the performance of the second- and third-order approximations, Eqs. (58)–(59), of the call and put option prices, $C_{m,H}, P_{m,H}$, with $m = 2, 3$, in the Heston framework.

The Heston exact formula is obtained by imposing $n = 1$ in Eq. (134) in Appendix C. Eqs. (132) and (133) in Appendix C are equal except for the values of q , which are valid over different intervals. In the following, we choose $q = 1.05$ for a call option and $q = -0.05$ for a put option⁸. Eqs. (132) and (133) are defined via convergent integrals that can be computed accurately using a simple composite rectangular rule.

We evaluate the exact formulas C_H and P_H and the approximated formulas $C_{m,H}$ and $P_{m,H}$ for the points in the following set:

$$\begin{aligned} \mathcal{M} = \{ (S_0, E, T, \gamma, v_0, \chi, v^*, \rho, r) \mid S_0 = 100, E = 80 + 10(j - 1), \\ T = 2j/5, j = 1, 2, \dots, 5, \\ \gamma = 0.01, 0.05, 0.15, 0.25, 0.5, 0.8, 2, v_0 = 2 + j/5, \\ j = 1, 2, \dots, 5, \chi = 1.5 + 1.5(j - 1), j = 1, 2, \dots, 5, \\ v^* = j\gamma^2/(2\chi), \rho = -j/6, j = 1, 2, \dots, 5, r = 0.01 \}. \end{aligned} \tag{86}$$

These values of model parameters in grid \mathcal{M} include those estimated by Christoffersen et al. (2009) in Section 4.2 (see, also the online supplementary material).

Some descriptive statistics for the call and put option prices, computed with the exact formulas C_H and P_H , are shown in Table 1.

Table 2 compares the exact option prices with their second- and third-order approximations. From left to right we report the vols of vols (γ), mean (mean_c), median (median_c), and standard deviation (std_c) of the relative call option errors, $e_{C,m}$, and the mean (mean_p), median (median_p), and standard deviation (std_p) of the relative put option errors, $e_{P,m}$, associated with the second-order approximation, $m = 2$ (in the top panel), and the third-order approximations, $m = 3$ (in the bottom panel).

The results in Table 2 show that while the quality of the approximations decreases as γ increases, the second-order approximation guarantees four correct significant digits up to a volatility of 50%. The average error of the second-order approximation is at most of the order of a percent for larger values of γ . The third-order approximation improves the estimation by less than one order of magnitude for the values of γ considered. Given that only marginal improvements are obtained with the third-order approximation, we focus on the second-order approximations when presenting numerical and empirical results in the following sections.

In the remainder of this section, we illustrate the computational advantages of using the second-order approximation formulas (58) and (59) in the Heston and double Heston models. To this end, we consider the same grid \mathcal{M} as in Eq. (86) and compute 3125 call and put option prices for each value of γ , averaging over the other parameters on the grid, using the second-order approximations $C_{2,H}$ and $P_{2,H}$. In the case of the double Heston model, we have chosen $(S_0, E, T, \gamma_1, v_{1,0}, \chi_1, v_{1,0}^*, \rho_1, r) \in \mathcal{M}$ and $(\gamma_2, v_{2,0}, \chi_2, v_{2,0}^*, \rho_2) = (\gamma_1, v_{1,0}, \chi_1, v_{1,0}^*, \rho_1)$, where $\gamma_2 = \gamma_1 = \gamma$. This choice is made to limit the number of call and put options to be evaluated to 31250 for each value of γ , as in the Heston model. We then evaluate the number of points to be

⁸ These values permit numerical integration with a simple rectangular rule for high values of the vols of vols. Numerical integration of the integral formulas in Appendix C for very large values of vols of vols deserves further investigation.

Table 3

From left to right: average, min and max number of points, $avg N_p$, $min N_p$, and $max N_p$, required by the rectangular rule to achieve the same accuracy as that of the second-order approximation formulas in the Heston (upper panel) and double Heston (lower panel) models; the total time $Time_H$ ($Time_{DH}$) and $Time_{2,H}$ ($Time_{2,DH}$) required to compute the European options with integral formulas (132) and (133) with N_p points and the second-order approximations $C_{2,H}$, $P_{2,H}$ ($C_{2,DH}$, $P_{2,DH}$); Avg. rel. err. are the average relative errors of the put and call option approximations with integral formulas C_H , P_H (P_{DH} , C_{DH}) and second-order approximations $P_{2,H}$, $C_{2,H}$ ($P_{2,DH}$, $C_{2,DH}$). For a fixed vol of vol (or pair of vols of vols), the relative errors are computed by averaging over the remaining parameters in the set \mathcal{M} for a total of 31250 option prices. The time is expressed in seconds. The computation was conducted on an Intel CORE i7 (8th generation) processor. The true values are obtained from integral formulas (132) and (133) using 2^{16} quadrature points.

Heston model									
γ	Avg N_p	min N_p	max N_p	Time _H (seconds)	Time _{2,H} (seconds)	Avg. rel. err. P_H	Avg. rel. err. C_H	Avg. rel. err. $P_{2,H}$	Avg. rel. err. $C_{2,H}$
0.01	57,487	49,182	64,287	1000.53	5.6703e-3	2.1214e-9	1.9918e-9	2.4319e-9	2.6084e-9
0.05	45,065	38,204	51,445	786.37	5.5438e-3	2.3726e-7	2.2266e-7	3.0146e-7	3.2296e-7
0.15	36,241	27,982	42,899	636.62	5.6344e-3	7.5595e-6	7.1100e-6	8.0736e-6	8.6186e-6
0.25	32,372	24,001	39,441	568.72	5.4188e-3	3.4802e-5	3.2779e-5	3.6758e-5	3.9068e-5
0.50	27,219	18,728	34,661	489.77	5.4844e-3	2.6347e-4	2.4914e-4	2.7410e-4	2.8760e-4
0.80	25,146	16,029	33,311	430.12	5.4781e-3	8.6383e-4	8.2078e-4	1.0099e-3	1.0428e-3
2.00	17,287	9376	27,407	311.37	5.4531e-3	9.7082e-3	9.3358e-3	1.0854e-2	1.0785e-2
Double Heston model									
$\gamma_1 (= \gamma_2)$	avg N_p	min N_p	max N_p	Time _{DH} (secs)	Time _{2,DH} (secs)	Avg. rel. err. P_{DH}	Avg. rel. err. C_{DH}	Avg. rel. err. $P_{2,DH}$	Avg. rel. err. $C_{2,DH}$
0.01	57,729	48,699	63,986	1697.921	6.9875e-3	2.0766e-9	1.9851e-9	2.6669e-9	2.7042e-9
0.05	43,997	35,194	50,835	1318.594	6.8625e-3	3.0610e-7	2.9264e-7	3.3035e-7	3.3479e-7
0.15	35,510	26,646	42,507	1059.156	7.0593e-3	8.3366e-6	7.9724e-6	8.8086e-6	8.9091e-6
0.25	31,331	22,505	38,302	1000.29	7.3562e-3	3.9098e-5	3.7409e-5	4.0008e-5	4.0365e-5
0.50	26,043	17,388	33,159	792.57	6.8687e-3	2.9259e-4	2.8042e-4	2.9844e-4	2.9902e-4
0.80	22,437	16,392	29,641	709.57	7.1750e-3	8.2388e-4	7.9060e-4	1.1009e-3	1.0947e-3
2.00	15,222	8232	22,594	490.907	6.8609e-3	1.0089e-2	9.7601e-3	1.0252e-2	1.0060e-2

used in the quadrature rule to achieve the same level of accuracy when pricing the options with integral formulas Eq. (134). In the top panel of Table 3, we report, from left to right (and for $\gamma = 0.01, 0.05, 0.15, 0.25, 0.5, 0.8, 2$), the average, mean and max number of points (truncated to the closest integer) required by the rectangular rule to achieve the same level of accuracy (i.e., relative error) in option prices as the second-order approximation formulas; the total times, $Time_H$ and $Time_{2,H}$, required to compute 31,250 European call and put options, respectively, with the integral formula and with formulas $C_{2,H}$ and $P_{2,H}$; and the average relative errors (i.e. Err. P_H , Err. C_H , Err. $P_{2,H}$ and Err. $C_{2,H}$) of the put and call options with the integral formulas P_H and C_H and with the second-order approximations $P_{2,H}$ and $C_{2,H}$. The columns in the bottom panel of Table 3 are the same as those in the top panel, but the results correspond to the double Heston model. The computations were conducted on an Intel CORE i7 (8th generation) processor. The true values are obtained with the integral formulas (132) and (133) using 2^{16} quadrature points.

Table 3 shows that using formulas (58) and (59) allows considerable savings in computation time with respect to using the integral formulas for both the Heston model (top panel) and double Heston model (bottom panel). This computation time reduction is important because, for the same level of accuracy, the time required to evaluate option prices with the integral formulas in the double Heston model is, in the best case, approximately twice that needed for the Heston model.

4.2. Simulation study 2: Heston and double Heston with empirical parameters

In this subsection, we repeat the previous exercise using model parameters calibrated to real data. Specifically, we use the parameters estimated by Christoffersen et al. (2009)⁹ for the Heston and

double Heston models for the years 1990 to 2004. The spot variance of the Heston model is chosen to be 0.9, while the spot variances of the double Heston model are $\nu_1 = 0.13$ and $\nu_2 = 0.75$. These choices are supported by the results of the empirical analysis discussed in Christoffersen et al. (2009) p. 1926. In fact, in Christoffersen et al. (2009), the sum of the factor estimates $\nu_{1,0}$ and $\nu_{2,0}$ is 88% in the two-factor model, and the difference is approximately 62%, while it is 90% in the one-factor model. Finally, the risk-free interest rate is chosen to be 0.15.

As the first step, we compute the prices of 25 European vanilla call and put options with spot price $S_0 = 100$, strike prices $E = 80 + j/5$, $j = 1, 2, \dots, 5$ and time to maturity $T = j/12$ years, $j = 1, 2, \dots, 5$ using the exact integral formulas with 2^{16} nodes. As in Section 4.1, these values are denoted the “true values”. Then, we compute the average relative errors, over the twenty-five options, for the put and call options second-order approximations in the Heston and double Heston frameworks. Finally, we determine the number of nodes necessary to achieve, with the integral formulas, the same average accuracy of the second-order approximation formulas and compare the computational times of the two methods. Tables 4 and 5 show the results of this experiment, respectively, for the Heston and double Heston frameworks. The columns in these tables are the same as those in Table 3, with the only difference being that the time and accuracy are computed for a specific set of model parameters, average across the strike and time to maturity.

We observe that, on average, the relative error of the second-order approximations is 0.02% for both put and call options in the Heston framework and 6.1% and 5.4%, respectively, in the double Heston model. These relative errors guarantee four correct significant digits for the Heston model and two correct significant digits for the double Heston model. The discrepancy in the accuracy between the two tables is due to the different magnitude of the vols

⁹ We report the values of these parameters in the online supplementary material. We also present the Feller condition corresponding to each set of parameters estimated by Christoffersen et al. (2009). The Feller condition is violated in several cases; therefore, the square root process of the variance can reach zero with

positive probability unless, as remarked in Christoffersen et al. (2009), the process satisfies a standard reflecting barrier at the origin. Interestingly, the Feller condition never holds in the case of process $\nu_{1,t}$. Violation of the Feller condition has also been noted in Pacati et al. (2018).

Table 4

From left to right: year, vol of vol γ_1 , number of points N_p required by the rectangular rule to achieve the same accuracy as that of the second-order approximation formulas in the Heston model; Time_H , $\text{Time}_{2,H}$ time required to compute the fifty put and call options with the integral formulas and the BS-second-order approximations; Avg. rel. err. P_{\cdot} and Avg. rel. err. C_{\cdot} : average relative errors on put and call options of the integral formulas with N_p points and the second-order approximations. For each set of model parameters estimated by Christoffersen et al. (2009) (see Table 3 Panel A) over the years 1990–2004, we compute European put and call options with spot price $S_0 = 100$, time to maturity $T = j/12$ years, and strike prices $E_j = 80 + 10(j - 1)$, $j = 1, 2, 3, 4, 5$. The risk-free interest rate is $r = 0.15$. The computation was conducted on an Intel CORE i7 (8th generation) processor. The true values are obtained with the integral formulas (132) and (133) using 2^{16} points.

Heston model								
Year	γ_1	N_p	Time_H (seconds)	$\text{Time}_{2,H}$ (seconds)	Avg. rel. err. P_H	Avg. rel. err. C_H	Avg. rel. err. $P_{2,H}$	Avg. rel. err. $C_{2,H}$
1990	0.85	25,104	0.984	9.375e-6	5.197e-4	3.959e-4	5.290e-4	5.547e-4
1991	0.58	28,143	1.078	1.094e-5	1.642e-4	1.223e-4	1.720e-4	1.690e-4
1992	0.55	28,566	1.078	1.094e-5	1.406e-4	1.042e-4	1.425e-4	1.405e-4
1993	0.51	29,284	1.125	9.375e-6	1.076e-4	7.920e-5	1.098e-4	1.088e-4
1994	0.46	29,724	1.328	1.094e-5	1.014e-4	7.280e-5	1.058e-4	9.277e-5
1995	0.56	29,284	1.125	1.094e-5	1.068e-4	7.837e-5	1.128e-4	1.216e-4
1996	0.58	29,139	1.109	1.094e-5	1.177e-4	8.579e-5	1.232e-4	1.339e-4
1997	0.60	28,283	1.078	9.375e-6	1.530e-4	1.138e-4	1.571e-4	1.665e-4
1998	0.81	25,229	0.984	1.094e-5	4.871e-4	3.733e-4	5.025e-4	4.944e-4
1999	0.76	25,993	1.797	9.375e-6	3.677e-4	2.795e-4	3.858e-4	3.808e-4
2000	0.66	27,316	1.051	1.319e-5	2.275e-4	1.700e-4	2.319e-4	2.331e-4
2001	0.65	27,864	1.141	1.187e-5	1.986e-4	1.459e-4	2.087e-4	2.123e-4
2002	0.60	27,864	1.141	1.406e-5	1.936e-4	1.429e-4	1.969e-4	1.862e-4
2003	0.68	27,046	1.106	1.187e-5	2.402e-4	1.810e-4	2.518e-4	2.655e-4
2004	0.38	30,472	1.219	1.344e-5	6.277e-5	4.686e-5	6.432e-5	5.516e-5
Avg.	0.62	27,954	1.533	1.344e-5	2.126e-4	1.595e-4	2.196e-4	2.210e-4

Table 5

From left to right: year, vols of vols γ_1 , γ_2 , number of points N_p required by the rectangular rule to achieve the same accuracy as that of the second-order approximation formulas in the double Heston model; Time_{DH} and $\text{Time}_{2,DH}$ time required to compute the fifty put and call options with the integral formulas and the second-order approximations; Avg. rel. err. P_{\cdot} and Avg. rel. err. C_{\cdot} : average relative errors on put and call options of the integral formulas with N_p points and the second-order approximations. For each set of model parameters estimated by Christoffersen et al. (2009) (see Table 3, Panel B) over the years 1990–2004, we compute European put and call options with spot price $S_0 = 100$, time to maturity $T = j/12$ years, and strike prices $E_j = 80 + 10(j - 1)$, $j = 1, 2, 3, 4, 5$. The risk-free interest rate is $r = 0.15$. The computation was conducted on an Intel CORE i7 (8th generation) processor. The true values are obtained with the integral formulas (132) and (133) using 2^{16} points.

Double Heston model									
Year	γ_1	γ_2	N_p	Time_{DH} (seconds)	$\text{Time}_{2,DH}$ (seconds)	Avg. rel. err. P_{DH}	Avg. rel. err. C_{DH}	Avg. rel. err. $P_{2,DH}$	Avg. rel. err. $C_{2,DH}$
1990	1.05	0.68	25,413	1.250	1.094e-5	9.909e-4	7.086e-4	1.109e-3	9.213e-4
1991	1.82	0.34	19,914	0.968	1.094e-5	6.647e-3	4.796e-3	7.391e-3	8.293e-3
1992	6.28	0.27	12,099	0.578	1.094e-5	1.056e-1	7.999e-2	1.236e-1	1.103e-1
1993	5.25	0.21	13,338	0.641	1.094e-5	6.533e-2	4.941e-2	8.140e-2	7.451e-2
1994	9.43	0.17	9956	0.484	1.250e-5	2.243e-1	1.691e-1	2.646e-1	2.266e-1
1995	6.89	0.24	11,523	0.562	1.094e-5	1.387e-1	1.033e-1	1.702e-1	1.491e-1
1996	2.01	0.19	19,914	0.969	1.094e-5	5.380e-3	4.058e-3	5.590e-3	5.985e-3
1997	1.54	0.12	23,051	1.141	1.094e-5	1.623e-3	1.224e-3	2.356e-3	2.582e-3
1998	2.12	0.40	19,914	1.016	1.094e-5	5.331e-3	4.101e-3	5.388e-3	5.646e-3
1999	1.99	0.38	20,909	1.031	1.094e-5	3.691e-3	2.831e-3	4.490e-3	4.748e-3
2000	1.94	0.23	20,909	1.031	1.094e-5	3.642e-3	2.770e-3	4.531e-3	4.849e-3
2001	1.91	0.20	20,909	1.016	1.094e-5	3.623e-3	2.753e-3	4.340e-3	4.651e-3
2002	1.98	0.17	20,909	1.016	1.250e-5	3.621e-3	2.746e-3	4.978e-3	5.307e-3
2003	8.81	0.40	9956	0.484	1.250e-5	2.263e-1	1.720e-1	2.366e-1	2.041e-1
2004	1.98	0.20	20,909	1.016	1.094e-5	3.627e-3	2.755e-3	4.940e-3	5.267e-3
Avg.	3.67	0.28	17,975	0.880	1.125e-5	5.323e-2	4.017e-2	6.143e-2	5.419e-2

of vols. In fact, in the years 1992–1995 and 2003, the vol of vol γ_1 is larger than 520%, with peaks of 943% in 1994 and 880% in 2003. In these years, we observe the largest relative errors for the double Heston model. In contrast to that of the double Heston model, the estimated vol of vol of the Heston model is always less than 80% and larger than 37% (see Tables 4 and 5).

We conclude this section by comparing the relative errors of the call option prices given by the zero-order Black–Scholes-type term (with Gaussian kernel \mathcal{G}_{Γ_2}) and by the first-, second- and third-order approximations as a function of vol of vol in the case of the Heston model and as a functions of the largest of the two vols of vols (i.e., γ_1) in the case of the double Heston model. In the left panel of Fig. 1, the model parameters are the same as those used for Tables 4 and 5. In this case, the prices for different levels of vols of vols are not perfectly comparable, as they also depend on the remaining model parameters. To isolate the effect of the vols

of vols and expand the range of values considered for this parameter, in the central panel, we plot the approximated option prices when fixing the model parameters to the values estimated for the year 1990 (see Table 8 Year 1990), while the vol of vol γ_1 is chosen to be $\gamma_1^m = e^{-3+m/2}$, $m = 1, 2, \dots, 30$, and $\gamma_2 = 0.007$. The grid of strike prices and times to maturity, over which the average is taken, is the same for both panels. In the right panel, we show for the same parameters as the central panel, the correction terms \mathcal{R}_i , for $i = 1, 2, 3$.

The curves log-error vs log vol-of-vol (left and central panels) depicted in Fig. 1 show that the errors grow linearly with the vols of vols for values of γ up to approximately 200%. The figures also provide empirical evidence that while the third-order expansion slightly improves the approximation for volatilities up to approximately 200%, beyond this value, the second- and third-order approximations become indistinguishable from each other and con-

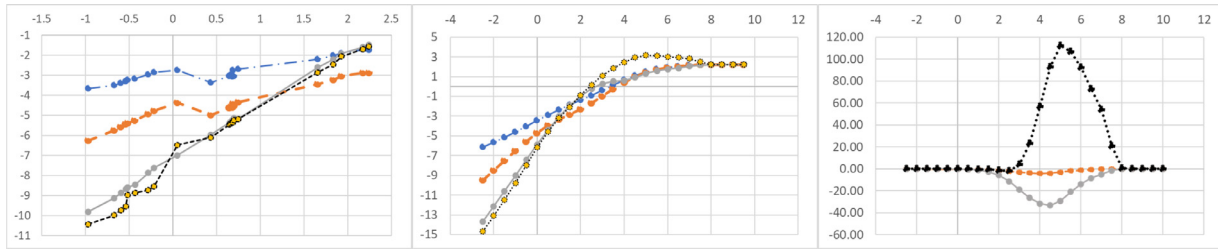


Fig. 1. Left and middle panels: relative errors of zero-, second-, and third-order approximations to the call options obtained in a log-log scale. Zero order: dash-dot line; first order: dashed line; second order: solid line; third order: dotted line. (Right) panel: correction terms \mathcal{R}_1 (dashed line), \mathcal{R}_2 (solid line), and \mathcal{R}_3 (dotted line) as a function of the log of the vols of vols.

verge to the Black and Scholes price, in line with the discussion in Section 3.1. Interestingly, for larger values of the vols, and in line with the theory of asymptotic series (as further explained in Section 7 of the supplementary material), the first-order approximation provides better estimates than higher-order approximations. This is a consequence of the fact that for large values of the vols of vols, the asymptotic expansion of \mathcal{L}^* may diverge. This is also signalled by the correction terms \mathcal{R}_2 and \mathcal{R}_3 becoming larger than \mathcal{R}_1 . However, despite the non-convergence, the asymptotic expansion may still provide a satisfactory approximation when truncated to a finite number of terms.

5. Accuracy of the option price approximations: empirical calibration study

In this section, we assess the performance of the Heston second-order approximation formula (58)–(59) to reproduce and to forecast traded European call and put option prices on the US S&P 500 index. In this exercise, the U.S. three-month government bond index is used as a proxy for the interest rate r .

The availability of an explicit and elementary formula for the implied volatility provides an advantage in terms of calibrating the model rather than estimating the parameters directly from the option prices. This is because it avoids biases caused by different magnitudes of option prices that are typically corrected by introducing appropriate weights in the optimization algorithm (i.e., the inverse of option Vegas, see Christoffersen et al., 2009, or the bid-ask spread, see Date & Islyayev, 2015). Additionally, the simple link between implied volatility and model parameters allows for reliable estimates while accelerating the solution of the optimization problem. We note that, while formulas similar to ours for the implied volatility (i.e., Eq. (63)) were derived by Bergomi and Guyon (2011), their effectiveness for calibration purposes has not been tested in the literature.

Here, we provide empirical evidence that by using the second-order approximations for the implied volatility $\Sigma_{2,H}$, we can obtain “consistent” estimates of the Heston model parameters from both the call and put options. Typically, option prices are filtered to avoid inconsistency resulting from the simultaneous use of call and put option prices (see Pacati et al., 2018). We do not filter any observations that do not satisfy standard no-arbitrage conditions while investigating how this affects the model calibration.

Our dataset consists of 1200 European vanilla call and put options with four strike prices (i.e., $n_E = 4$) and $n_T = 150$ maturities. Starting from the traded call option prices $C^o(S_i, T_i, E_j)$ with spot price S_i , time to maturity T_i and strike price E_j , and using the U.S. three-month government bond yield as the risk-free interest rate, r , we compute the observed implied volatility, $\sigma_c^o(S_i, T_i, E_j)$, for $i = 1, 2, \dots, n_T, j = 1, 2, \dots, N_E$. This computation is performed using the Matlab function *calcBSImpVol*, which uses Li’s rational function approximator for the initial estimate (see, Li, 2006; Li, 2008),

followed by Householder’s root finder of the third order to improve the convergence rate of the Newton–Raphson method.

For any time $i = 1, 2, \dots, n_T$, we then estimate the Heston model parameters $\Theta_i = (\chi_i, v_i^*, \gamma_i, \rho_i, v_0^i) \in \mathbb{R}^5, i = 1, 2, \dots, n_T$, to solve the optimization problem:

$$\min_{\Theta^c \in \mathcal{V}} \sum_{j=1}^{n_E} \left[\sigma_c^o(S_i, T_i, E_j) - \frac{\Sigma_{2,H}(S_i, T_i, E_j)}{\sqrt{T_i}} \right]^2, \tag{87}$$

where $\Sigma_{2,H}$ is given in formula (63) with $n=1$ and \mathcal{V} is the following set of constraints:

$$\mathcal{V} = \{ \Theta = (\chi, v^*, \gamma, \rho, v_0) \in \mathbb{R}^5 \mid \gamma, v^*, \chi, v_0 > 0, -1 < \rho < 1 \}; \tag{88}$$

To solve problem (87), we use a metric variable steepest descent algorithm (see, for example, Recchioni & Scoccia, 2000; Fatone, Mariani, Recchioni, & Zirilli, 2013). This is an iterative algorithm that generates a sequence of points, $\Theta^k, k = 0, 1, \dots$, belonging to the interior of the feasible region and moving opposite to the gradient vectors of the objective function computed in a suitable metric.

We then repeat the calibration procedure starting from the observed put prices $P^o(S_i, T_i, E_j)$, where P^o is the observed value of the put option, $i = 1, 2, \dots, n_T$, and $j = 1, 2, \dots, n_E$, and solve the problem

$$\min_{\Theta^p \in \mathcal{V}} \sum_{j=1}^{n_E} \left[\sigma_p^o(S_i, T_i, E_j) - \frac{\Sigma_{2,H}(S_i, T_i, E_j)}{\sqrt{T_i}} \right]^2. \tag{89}$$

In this way, we obtain two optimal sets of model parameters, one starting from the call options, Θ^c , and the other starting from the put options, Θ^p .

Some descriptive statistics for the estimated model parameters, initial variance, Feller ratio, objective function and observed implied volatility are given for the two sets in Table 6. The values of the objective function compare favourably with those in Table 1 of Veng et al. (2019). The two sets of parameters are almost identical, with the exception of the estimate of the long-term mean parameter. We argue that the difference in the v^* parameter estimate from the call and put prices is due to market imperfections that lead to a spread between the implied volatility σ^o of call and put options. In fact, the absolute value of the implied volatility spread, $|\sigma_c^o(S_i, T_i, E_j) - \sigma_p^o(S_i, T_i, E_j)|$ derived from the call and put options is 0.04 on average, while the relative absolute spread (i.e., the ratio of the spread to implied volatility from the call) is 0.24. Interestingly, the absolute difference between the square root of the two long-term variance parameters is 0.05, and the ratio of this difference to the square root of the call variances is 0.29, thus mirroring the implied volatility spread.

To evaluate the model consistency, we compute the European call and put option prices using formulas $C_{2,H}$ and $P_{2,H}$ in Eqs. (58)–(59) with both sets of estimated parameters. Fig. 2 shows

Table 6
Descriptive statistics for estimated values of the model parameters and observed implied volatility σ^o .

Call set								
	χ	ν^*	γ	ρ	ν_0	$\frac{2\chi\nu^*}{\gamma^2}$	Obj. func.	σ^o
Mean	5.7999	0.014663	0.50098	-0.8502	0.08060	0.677512	8.35e-5	0.1581
Median	5.7999	0.012726	0.50100	-0.8502	0.08200	0.588756	2.28e-5	0.1546
Std	0.00057	0.007032	0.000303	0.000220	0.004912	0.324606	1.46e-4	0.020
Put set								
	χ	ν^*	γ	ρ	ν_0	$\frac{2\chi\nu^*}{\gamma^2}$	obj. func.	σ^o
Mean	5.7999	0.029102	0.5009	-0.8502	0.08384	1.34530	7.84e-5	0.1931
Median	5.7999	0.029114	0.5009	-0.8502	0.08489	1.29907	2.02e-5	0.1923
Std	0.000020	0.006205	0.00026	0.00018	0.004243	0.28708	2.87e-4	0.0168

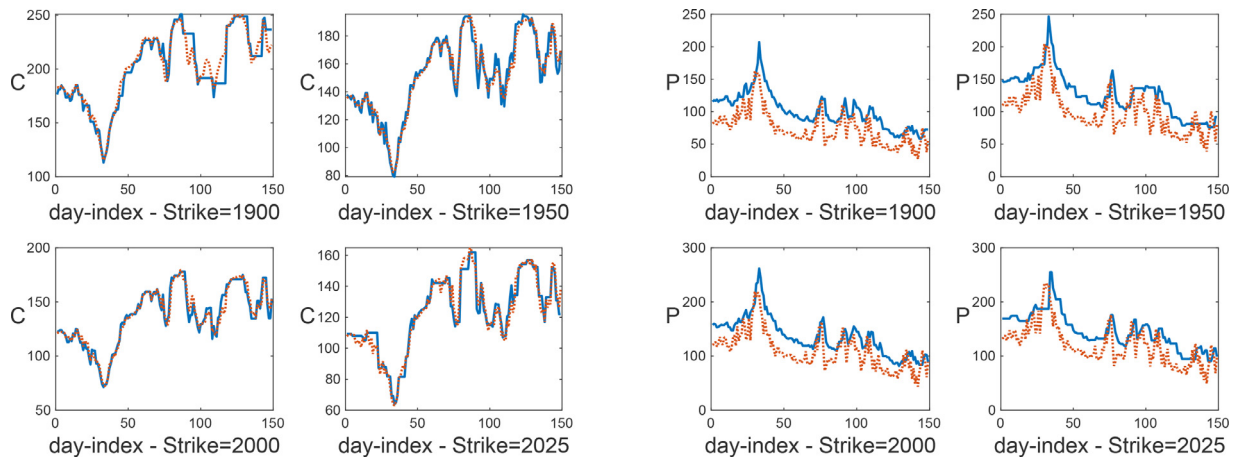


Fig. 2. Left panel: Observed call option prices (solid line) and second-order approximations $C_{2,H}$ (dotted line) for four different strike prices $E_1 = 1900$, $E_2 = 1975$, $E_3 = 2000$, and $E_4 = 2025$ and expiry date $T =$ December 19, 2015, versus time (September 1, 2014–March 30, 2015) obtained with the optimal parameters from the observed implied volatility of call options (i.e., call set). Right panel: Observed put option prices (solid line) and Black-Scholes second-order approximations $P_{2,H}$ (dotted line) for four different strike prices $E_1 = 1900$, $E_2 = 1975$, $E_3 = 2000$, and $E_4 = 2025$ and expiry date $T =$ December 19, 2015, versus time (September 1, 2014–March 30, 2015) obtained with the optimal parameters from the observed implied volatility of call options (i.e., call set).

the observed and second-order (solid line and dotted line, respectively) call option prices. The approximations in Fig. 2 are obtained using the model parameters estimated by the observed implied volatility from call options (i.e., call set). The corresponding figures for the put prices, obtained using the model parameters estimated by the observed implied volatility from put options (i.e., put set) are available in the supplementary material. For each set, we compute the mean and standard deviation of the relative errors for the call options as:

$$E_{i,j}^{C,\Theta^L} = |C^o(S_i, T_i, E_j) - C_{2,H}(S_i, T_i, E_j; \Theta^L)| / C^o(S_i, T_i, E_j), \text{ with } L = C, P,$$

and we also compute the equivalent errors for the put options. The average relative errors E^{C,Θ^C} and E^{P,Θ^P} (i.e., when parameters are estimated starting from the corresponding option prices) are, respectively, 0.027 (i.e., 2.7%) and 0.031 (i.e., 3.1%). These errors are in line with those in Pacati et al. (2018), where a double Heston model with jumps is used. By contrast, when using the model parameters of the put set to estimate the call prices, and vice versa, the relative errors E^{C,Θ^P} and E^{P,Θ^C} are, on average, 0.21 (i.e., 21%) for the call and 0.22 (i.e., 22%) for the put options. Thus, while the cross estimates produce a clear bias, the error is of the same order as the relative error in the implied volatility (i.e., 24%), suggesting that the bias is driven by market imperfections rather than an inconsistency with the methodology.

We conclude this section by testing the potential of the calibrated parameters to forecast option prices one day ahead. Fig. 3 shows the one-day-ahead estimates for call (left panel) and put (right panel) option prices. Specifically, the option estimates at

time $t + 1$ are calculated using the optimal parameter values at time t . The one-day-ahead estimated call prices are obtained using the model parameters Θ_t^C , while the one-day-ahead estimated put prices are obtained from Θ_t^P . The relative errors of the one-day-ahead estimates are, on average, 4.67% for call options and 4.72% for put options.

6. Variance of the Gaussian kernels and the VIX index

In this section, we focus on the relationship between the VIX and the variances Γ_0 and Γ_2 in the Heston, double Heston, and triple Heston models. We use the VIX time series for the years 2000, 2001, 2002 and 2003 provided by the CBOE¹⁰ and two time series for the realized variance, the median truncated realized variance and the 5-minute realized variance, both available from the Oxford-Man Institute¹¹. For the Heston model, we assume that the realized variance from the Oxford-Man Institute database plays the role of the spot variance; thus, $\nu_t = RV_t$. The use of the realized variance as a proxy for the short-term volatility factor is supported by the results illustrated in Corsi, Fusari, and La Vecchia (2013). In the double Heston model, each factor variance is evaluated as a fraction of the total realized variance; thus, $\nu_{1,t} = \alpha_1 RV_t$ and $\nu_{2,t} = (1 - \alpha_1) RV_t$. In the triple Heston model, the stochastic variances $\nu_{j,t}$, $j = 1, 2, 3$ are chosen to be a fraction of the total

¹⁰ The VIX level was downloaded from <http://www.cboe.com/products/vix-index-volatility/vix-options-and-futures/vix-index/vix-historical-data>.

¹¹ website <https://realized.oxford-man.ox.ac.uk/data>.

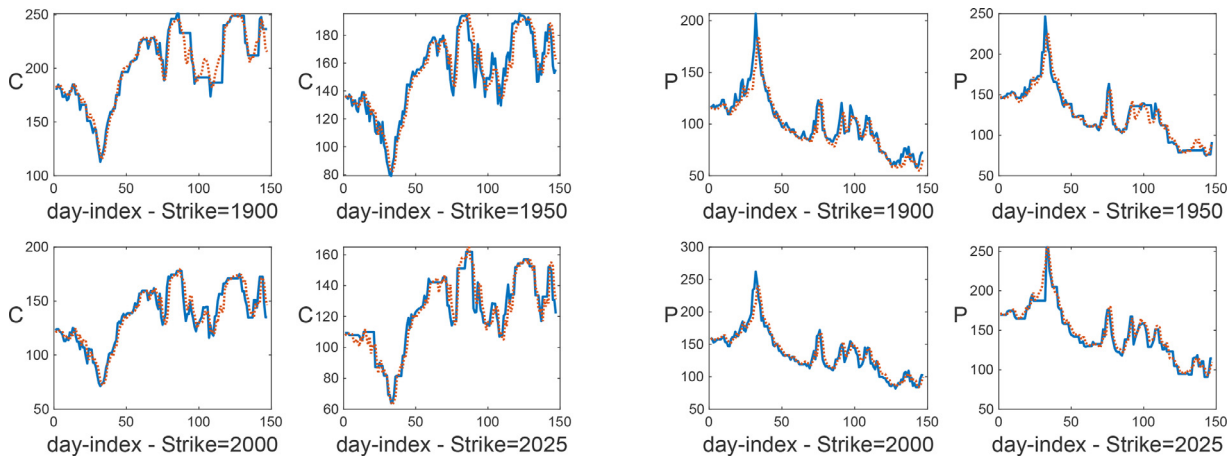


Fig. 3. Observed option prices (solid line) and one-day-ahead estimates computed using second-order approximation (dotted line) for four different strike prices $E_1 = 1900$, $E_2 = 1975$, $E_3 = 2000$, and $E_4 = 2025$ and with expiry date $T =$ December 19, 2015, versus time (September 1, 2014–March 30, 2015). Call price one-day-ahead estimates using the call set (left panel); Put price one-day-ahead estimates using the put set (on the right). The average relative errors of call and put options are 7.9% and 6.2%, respectively.

Table 7
Estimated parameters for the Heston model from Christoffersen et al. (2009).

Heston model parameters					
Year	χ	ν^*	γ	ρ	$\frac{2\chi \nu^*}{\gamma^2}$
2000	2.5751	0.0678	0.6561	-0.6975	0.8111
2001	3.8191	0.0564	0.6489	-0.7410	1.0231
2002	3.3760	0.0532	0.5973	-0.7725	1.0068
2003	1.7201	0.0691	0.6837	-0.5939	0.5085

realized variance, as $v_{j,t} = \alpha_j RV_t$, $j = 1, 2, 3$, $\alpha_j \geq 0$, $\alpha_j \leq 1$. We use $\tilde{\Sigma}_{n,model}(t)$ to denote the quantity

$$\tilde{\Sigma}_{n,model}(t) = \sqrt{\frac{\Gamma_{n,model}(t, t+T)}{T}}, \quad model = H, DH, TH \quad n = 0, 2. \tag{90}$$

6.1. Gaussian kernels and the VIX index in the Heston and double Heston frameworks

We now empirically test the relationship between the VIX, Γ_0 and Γ_2 in the Heston and double Heston frameworks. For each fixed year, we use the model parameters in Christoffersen et al. (2009), provided in Table 7 and Table 8, to compute the kernel variance Γ_0 and Γ_2 , while the α_1 parameter is obtained by minimizing the squared residuals (sum of squared errors):

$$SSE = \sum_t [\tilde{\Sigma}_{2,TH}(t; \alpha_1) - VIX_t]^2. \tag{91}$$

across the four years (thus, α_1 is imposed to be the same for the four years). We find that the optimal value of α_1 is $\alpha_1 = 0.15$ when we use the median truncated realized variance and $\alpha_1 = 0.06$ in the case of 5-minute realized variance.

We start by comparing, in Figs. 4 and 5, the VIX time series (solid line) and $\tilde{\Sigma}_{2,model}$ (dotted line) in the Heston (Fig. 4) and double Heston (Fig. 5) models as a function of the day index for each year considered. The figures show that $\tilde{\Sigma}_{2,DH}(t)$ (see Eq. (90)) more closely follows the VIX behavior for all years and both time series. This result is confirmed in Table 9, which shows that the double Heston model outperforms the Heston model in terms of the sup-norm. The RMSE shown in Table 9 compares favourably with the results obtained by Corsi et al. (2013) (see Section 4.3, Table 4).

We then compare, in Fig. 6, the fit between the VIX and $\tilde{\Sigma}_{2,model}$ versus $\tilde{\Sigma}_{0,model}$. The figures clearly show, as discussed in Section 3.3, that the VIX overestimates $\Sigma_{0,model}$.

To provide further evidence of this point, we test for linear dependence between the VIX index and $\tilde{\Sigma}_{0,model}$ and $\tilde{\Sigma}_{2,model}$ with $model = H$ and DH . This is done by regressing the daily VIX observations on the daily estimates of $\tilde{\Sigma}_{0,model}(t)$ and $\tilde{\Sigma}_{2,model}(t)$ when using, respectively, the median truncated realized variance (see Table 10, left panel) and the 5-minute realized variance (see Table 10, right panel) as proxies of the spot variance process $v_t = \sum_{j=1}^n v_{j,t}$. The results of these zero-intercept regressions show that both $\tilde{\Sigma}_{0,model}(t)$ and $\tilde{\Sigma}_{2,model}(t)$ perform better than the naive linear model $VIX_t = \beta_1 RV_t + noise$. The coefficients are statistically significant at the 5% level. These results are in line with the findings of Huang et al. (2020). These results also confirm our hypothesis that $\tilde{\Sigma}_{2,model}(t)$ in the Heston and double Heston models captures the VIX dynamics better than $\tilde{\Sigma}_{0,model}(t)$. In fact, in both the Heston and double Heston models, the coefficient β_1 is, on average, closer to one when we regress on $\tilde{\Sigma}_{2,model}(t)$ rather than $\tilde{\Sigma}_{0,model}(t)$.

We further investigate the quality of the VIX approximation by analysing the bias, i.e., $E(\tilde{\Sigma}_{m,model} - VIX)$, for $m = 0, 2$, for the Heston and double Heston models. Table 11 shows that $\tilde{\Sigma}_{0,model}$ has a more pronounced bias than $\tilde{\Sigma}_{2,model}$ and that, particularly for the years characterized by large vols of vols, the use of $\tilde{\Sigma}_{2,model}$ substantially improves the fit.

To provide further intuition about the above results, we compare the accuracy of the double Heston call option pricing formulas when the expansion in the vols of vols is performed starting from the representation in Eq. (15), after extracting the Gaussian kernel Γ_0 , and from the representation in Eq. (18), after extracting the Gaussian kernel Γ_2 . We focus on out-of-the-money call options, which are the ones used to compute the VIX index. A better performance of the approximation formulas, written in terms of Γ_2 , in pricing out-of-the-money options, would provide justification for the better performance of Γ_2 itself in approximating the VIX.

As an illustration, we use the double Heston parameters estimated by Christoffersen et al. (2009) for European call options on the S&P500 in the year 2003 (see the last row of Table 8). The first factor of the double Heston model in 2003 is characterized by a high vols of vols (881%), a very small long-term mean (i.e., 0.33%) and a slow mean reverting speed (i.e., 0.1638), so the pa-

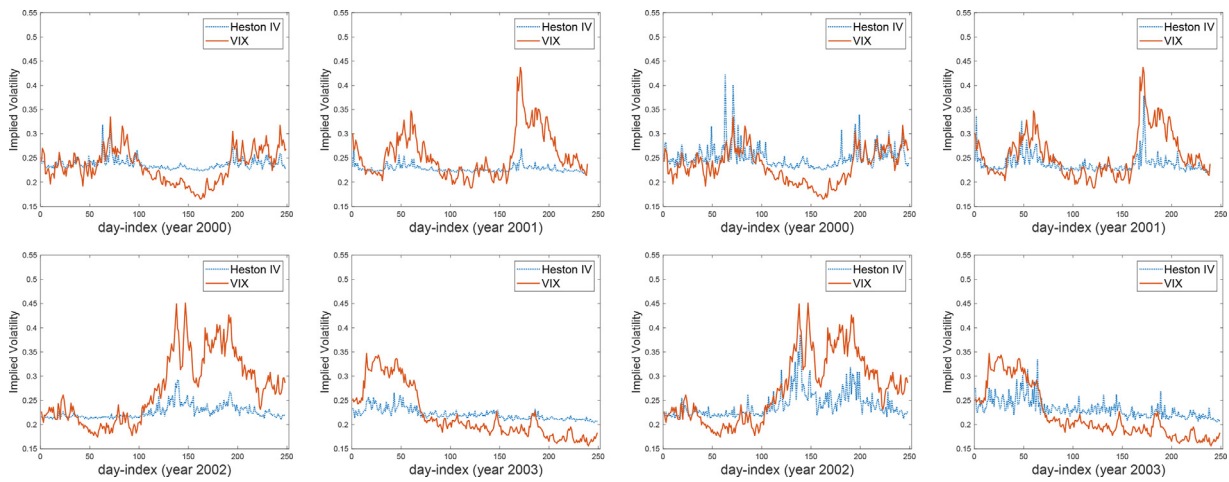


Fig. 4. Each panel contains the VIX time series and the model implied volatility $\Sigma_{2,H}$ (i.e., Eq. (90) – Heston model) as a function of day. The model parameters in Table 7 were used with the spot variance of the price log-return corresponding to the daily time series of the median truncated realized variance (left panels) and the 5-minute realized variance (right panels) from the Oxford-Man Institute.

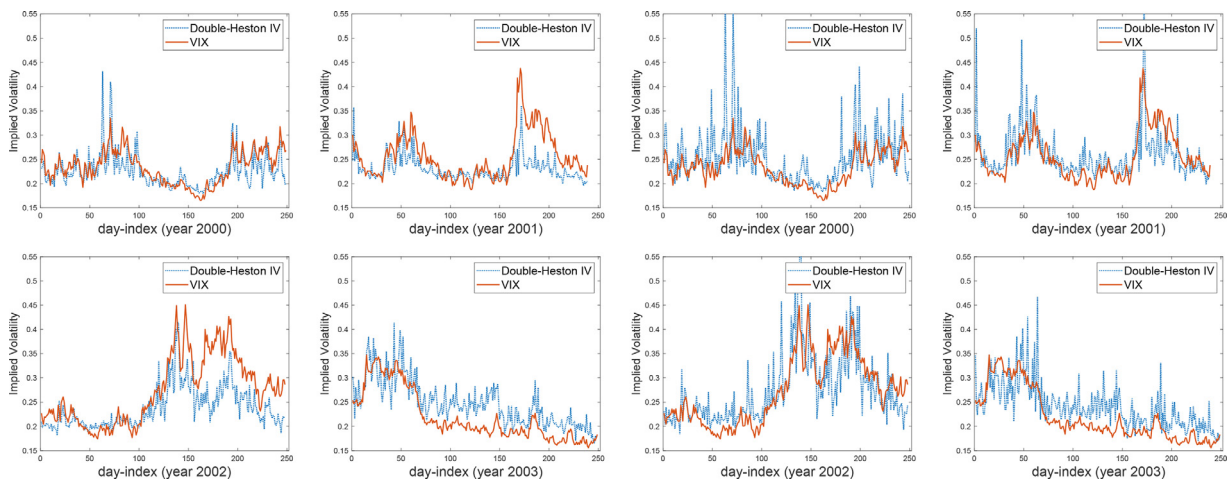


Fig. 5. Each panel contains the VIX time series and the model implied volatility $\Sigma_{2,DH}$ (i.e., Eq. (90) – Double Heston model) as a function of day. The model parameters in Table 8 were used with the spot variance of the price log-return corresponding to the daily time series of the median truncated realized variance (left panels, $\alpha = 0.15$) and the 5-minute realized variance (right panels, $\alpha = 0.06$) from the Oxford-Man Institute.

Table 8
Estimated parameters for the double Heston model from Christoffersen et al. (2009).

Double Heston model parameters										
Year	χ_1	ν_1^*	γ_1	ρ_1	χ_2	ν_2^*	γ_2	ρ_2	$\frac{2\chi_1\nu_1^*}{\gamma_1^2}$	$\frac{2\chi_2\nu_2^*}{\gamma_2^2}$
2000	0.1404	0.0052	1.9382	-0.9915	0.3542	0.1690	0.2292	-0.9024	0.0004	2.2789
2001	0.1433	0.0054	1.9115	-0.9911	0.2347	0.1655	0.2047	-0.8983	0.0004	1.8539
2002	0.1491	0.0058	1.9754	-0.9902	0.1855	0.1607	0.1715	-0.8896	0.0004	2.0270
2003	0.1638	0.0032	8.8078	-0.9838	0.4625	0.1198	0.3976	-0.6569	0.0000	0.7009

parameters do not satisfy the Feller condition. The second factor is characterized by less volatile dynamics, with a vols of vols of 39%, a long-term mean equal to 11% and a faster mean reverting speed (i.e., 0.4625). This suggests that the volatility remains closer to its long-term mean, with parameters satisfying the Feller condition. The initial value of each factor variance is evaluated as a fraction of the total variance, so $\nu_{1,0} = \alpha$ and $\nu_{2,0} = (1 - \alpha)$. The risk-free interest rate is chosen to be 0.15.

We analyse the accuracy of the approximations as a function of α (which is the only parameter we estimated in the VIX exercise) to assess the sensitivity of the option price approximations to the choice of spot volatility. The comparison is presented in Fig. 7, where the relative errors of the second-order call option approx-

imations in the double Heston framework are shown in a logarithmic scale. The solid lines are the approximations obtained with the Gaussian kernel \mathcal{G}_{Γ_0} , while the dashed lines are those obtained with \mathcal{G}_{Γ_2} . In all panels, a logarithmic scale with logarithm-base 10 is used. The x-axis shows the values of the spot variance $\nu_{1,t} = \alpha$. Fig. 7 shows that the approximations obtained with the complete kernel \mathcal{G}_{Γ_2} are more accurate than those obtained with \mathcal{G}_{Γ_0} for the considered parameter values. Interestingly, some values of the spot variance $\nu_{1,0}$ (i.e., $\nu_{2,0}$) reduce the relative pricing errors. We note that as we move from $\nu_{1,0} = 0$ to $\nu_{1,0} = 1$, we start closer to or further from the long-term means of the two factors. This movement has the effect of changing the relative contribution of each factor to the overall dynamics, which, as the process transitions

Table 9
Root mean square error (RMSE) obtained using $\tilde{\Sigma}_{2,model}$ to approximate the VIX index.

Model	Median truncated RV			5-minute RV		
	RMSE	min err	max err	RMSE	min err	max err
Heston	0.0276	0.0131	0.0453	0.0253	0.0168	0.0380
Double Heston	0.0239	0.0152	0.0341	0.0301	0.0233	0.0347

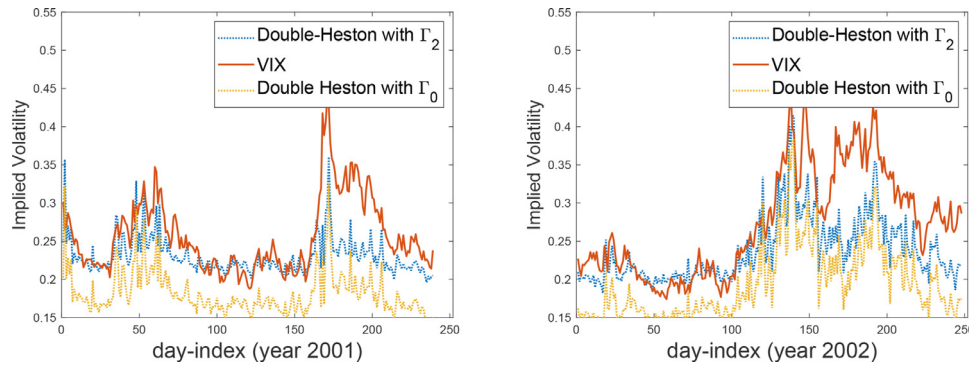


Fig. 6. Comparison of VIX, $\sqrt{\Gamma_0/T}$ and $\sqrt{\Gamma_2/T}$ (double Heston model) when the spot variance is computed with the RV median truncated realized variance.

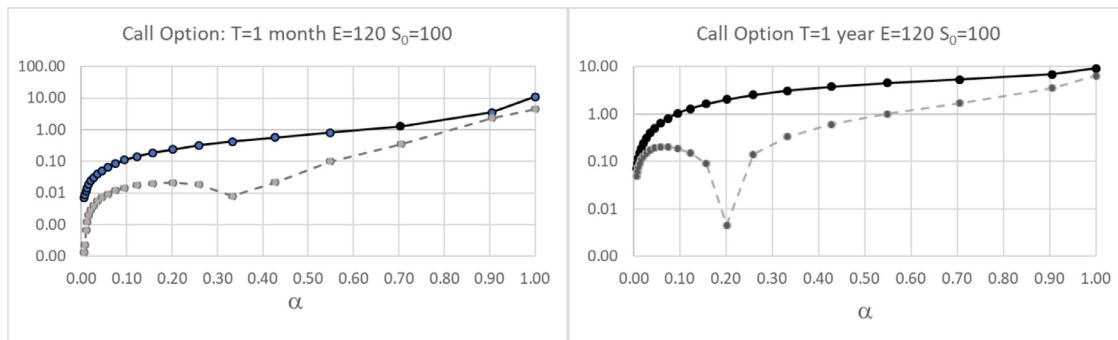


Fig. 7. Relative errors of the second-order approximations of call options in the double Heston framework obtained using the Gaussian kernels \mathcal{G}_{Γ_0} (solid-line) and \mathcal{G}_{Γ_2} (dashed line) as a function of the initial spot variance $v_{1,0} = \alpha$, $v_{2,0} = (1 - \alpha)$. The double Heston parameters used to compute the call option prices are those estimated in the year 2003 and shown in Table 8. A logarithmic scale is used for the y-axis (logarithm base=10).

from smooth mean reverting dynamics with a small vol of vol to dynamics with abrupt fluctuations, could make the option more difficult to price, explaining the observed changes in pricing errors.

While we restrict the analysis to out-of-the-money options for a specific set of parameters, the comparison of the accuracy of the two approximations when expressed in terms of Γ_0 or Γ_2 deserves a full investigation, which will be the subject of future work.

6.2. Calibration of the double and triple Heston models from the VIX index

Given the encouraging results in the previous subsection, we explore the possibility of calibrating the parameters of the double and triple Heston models directly from the VIX daily data.

For this exercise, we use only the median truncated realized variance as a proxy of the spot variance v_t . In this case, both the model parameters and α_i are obtained by minimizing the squared residuals (SSE) separately for each year (thus, α_i differs by year). We use the Matlab *lsqnonlin* function to minimize the SSE. As a starting point, we use the Heston and double Heston parameters from the previous section.

We first calibrate the double Heston model. The results reported in Table 12 are similar to those of Christoffersen et al. (2009) for a large basket of options. The estimated parameters for the triple Heston model are reported in Table 13, and the relative values of the coefficients α_j , $j = 1, 2, 3$ are shown in Table 14.

Fig. 8 presents the VIX time series (solid line) and $\tilde{\Sigma}_{2,TH}$ (dotted line) in the triple Heston model as a function of the day index for each year considered. The fit with $\tilde{\Sigma}_{2,TH}(t)$ appears to better capture the VIX behavior than the Heston and double Heston models presented in the previous subsection. The visual inspection is supported by the lower values of the average, minimum and maximum RMSE, which are 0.0187, 0.0126 and 0.0258, respectively, and of the bias, reported in the last column of Table 14, which is two orders of magnitude lower than the values in Table 11. The coefficient β_1 is also closer to one.

Notably, the estimation performed using the VIX provides model parameter values for the first two factors that are similar to those obtained by Christoffersen et al. (2009). In particular, the second factor, which is dominant, is consistently slowly mean reverting around its long-run mean, while the first factor has more volatile dynamics around its very small long-term mean across the whole period. By contrast, the temporal dynamics of the parameters characterizing the third factor appear to switch between these two types of behavior. Specifically, the vol of vol, γ_3 , and the speed of mean reversion, χ_3 , are lower in the years 2001 and 2002, while the long-term mean, v_3^* , is higher in the same years. The correlation coefficient, ρ_3 , changes sign, going from positive in 2000 to negative in 2001 and 2002 and positive again in 2003. This behavior may be driven by the 2001 crisis, which was triggered by the collapse of the dot-com bubble and the 9/11 attacks. The long-term mean, in particular, is anti-correlated with the dynamics of the real

Table 10
Zero-intercept regression models with two proxies for spot variance. The model parameters of the Heston and double Heston models are taken from Table 3 in Christoffersen et al. (2009).

Proxy: median truncated realized variance					
$VIX_t = \beta_1 RV_t + noise$					
Year	β_1	S.E.	t-stat	R^2	
2000	0.589	0.0089	65.94	0.271	
2001	0.490	0.0075	64.54	0.352	
2002	0.574	0.0081	68.20	0.532	
2003	0.524	0.0063	82.66	0.597	
$VIX_t = \beta_1 \tilde{\Sigma}_{0,H}(t) + noise$					
Year	β_1	S.E.	t-stat	R^2	
2000	0.93603	0.0069	134.65	0.609	
2001	0.8142	0.0087	93.718	0.5583	
2002	0.745	0.0095	78.416	0.6095	
2003	0.8846	0.0107	82.43	0.6042	
$VIX_t = \beta_1 \tilde{\Sigma}_{2,H}(t) + noise$					
Year	β_1	S.E.	t-stat	R^2	
2000	1.002	0.0075	132.2	0.600	
2001	0.860	0.0092	92.67	0.553	
2002	0.786	0.0102	76.65	0.599	
2003	0.962	0.0120	80.17	0.591	
$VIX_t = \beta_1 \tilde{\Sigma}_{0,DH}(t) + noise$					
Year	β_1	S.E.	t-stat	R^2	
2000	0.8677	0.0063	138.28	0.6192	
2001	0.6979	0.0063	109.85	0.6300	
2002	0.6995	0.0067	104.7	0.7288	
2003	0.8096	0.0079	101.75	0.6961	
$VIX_t = \beta_1 \tilde{\Sigma}_{2,DH}(t) + noise$					
Year	β_1	S.E.	t-stat	R^2	
2000	0.964	0.0072	132.60	0.599	
2001	0.879	0.0079	110.74	0.635	
2002	0.699	0.0068	104.73	0.7328	
2003	0.8071	0.0079	101.33	0.6944	
Proxy: 5-minute realized variance					
$VIX_t = \beta_1 RV_t + noise$					
$\tilde{\Sigma}_{2,DH}$ Year	β_1	S.E.	t-stat	R^2	
2000	0.807	0.0156	51.68	0.186	
2001	0.706	0.0138	50.86	0.253	
2002	0.784	0.0140	55.73	0.431	
2003	0.671	0.0101	66.40	0.489	
$VIX_t = \beta_1 \Sigma_{0,H}(t) + noise$					
Year	β_1	S.E.	t-stat	R^2	
2000	1.004	0.0076	132.1	0.5981	
2001	0.8594	0.0082	103.57	0.6048	
2002	0.8044	0.0092	76.65	0.6554	
2003	0.9371	0.01095	85.53	0.6204	
$VIX_t = \beta_1 \tilde{\Sigma}_{2,H}(t) + noise$					
Year	β_1	S.E.	t-stat	R^2	
2000	1.068	0.0080	132.2	0.602	
2001	0.904	0.0088	102.3	0.599	
2002	0.843	0.0098	85.254	0.646	
2003	1.013	0.0121	83.488	0.609	
$VIX_t = \beta_1 \tilde{\Sigma}_{0,DH}(t) + noise$					
Year	β_1	S.E.	t-stat	R^2	
2000	1.013	0.0111	91.21	0.414	
2001	0.8518	0.0110	77.58	0.4578	
2002	0.8698	0.0116	75.24	0.5806	
2003	0.8957	0.0094	94.66	0.664	
$VIX_t = \beta_1 \tilde{\Sigma}_{2,DH}(t) + noise$					
Year	β_1	S.E.	t-stat	R^2	
2000	1.087	0.0120	90.56	0.410	
2001	1.008	0.0106	94.51	0.557	
2002	0.992	0.0112	88.14	0.655	
2003	1.107	0.0114	94.23	0.660	

Table 11

Comparison of the bias in the estimates obtained with $\hat{\Sigma}_{0,H}$, $\hat{\Sigma}_{2,H}$, $\hat{\Sigma}_{0,DH}$ and $\hat{\Sigma}_{2,DH}$ using the two proxies for the spot variance.

Year	Proxy: Median truncated realized variance				Proxy: 5-minute realized variance			
	Heston		Double Heston		Heston		Double Heston	
	$Bias \hat{\Sigma}_{0,H}$	$Bias \hat{\Sigma}_{2,H}$	$Bias \hat{\Sigma}_{0,DH}$	$Bias \hat{\Sigma}_{2,DH}$	$Bias \hat{\Sigma}_{0,H}$	$Bias \hat{\Sigma}_{2,H}$	$Bias \hat{\Sigma}_{0,DH}$	$Bias \hat{\Sigma}_{2,DH}$
2000	-0.0114	0.0045	-0.0294	-0.0070	0.0037	0.0192	0.0033	0.0207
2001	-0.0414	-0.0290	-0.0748	-0.0260	-0.0306	-0.0187	-0.0373	0.0050
2002	-0.0596	-0.0473	-0.0797	-0.0357	-0.0446	-0.0329	-0.0354	0.0018
2003	-0.0166	0.0016	-0.0359	0.0284	-0.0054	0.0125	-0.0172	0.0220
Avg	-0.0322	-0.0175	-0.0549	-0.0101	-0.0192	-0.0049	-0.0216	0.0123

Table 12

Estimated parameters for the double Heston model from VIX data.

Double Heston model parameters											
year	χ_1	v_1^*	γ_1	ρ_1	χ_2	v_2^*	γ_2	ρ_2	α_1	α_2	Bias
2000	0.4128	0.0001	1.8897	-0.9664	1.0737	0.0937	0.2225	-0.8773	0.1439	0.8560	-1.064e-4
2001	0.1462	0.0204	3.5930	-0.9623	0.2534	0.3103	0.2077	-0.8762	0.1914	0.8085	-1.187e-4
2002	0.1463	0.0960	3.198	-0.9922	0.1979	0.1994	0.2073	-0.9149	0.2533	0.7466	-3.869e-4
2003	0.0367	0.0027	8.0235	-0.8953	0.3951	0.1030	0.3501	-0.5771	0.1372	0.8627	2.6097e-5

Table 13

Triple Heston model parameters estimated from the VIX and the median truncated realized variance data by minimizing the SSE in Eq. (91).

Triple Heston model parameters												
Year	χ_1	v_1^*	γ_1	ρ_1	χ_2	v_2^*	γ_2	ρ_2	χ_3	v_3^*	γ_3	ρ_3
2000	0.4840	0.0046	1.6951	-0.8672	0.3231	0.1516	0.2023	-0.8027	4.3913	0.0170	2.529	0.1009
2001	0.1286	0.0056	4.5488	-0.9988	0.2271	0.1607	0.2024	-0.8916	0.4429	0.1197	0.0123	-0.5101
2002	0.1317	0.0069	4.1944	-0.9873	0.1623	0.1490	0.1624	-0.7542	0.3289	0.1435	0.10931	-0.5354
2003	0.1128	0.0016	8.9596	-0.9752	0.4326	0.0920	0.3884	-0.6436	5.2722	0.0001	7.2568	0.4272

Table 14

(Left) Parameters α_j , $j = 1, 2, \dots$, with $v_{1,t} = \alpha_1 RV_t$, $v_{2,t} = \alpha_2 RV_t$, $v_{3,t} = \alpha_3 RV_t$ estimated from the VIX and the median truncated realized variance data by minimizing the SSE in Eq. (91). (Right) Results of zero-intercept linear regression $VIX_t = \beta_1 \hat{\Sigma}_{2,TH}(t) + noise$, that is, β_1 , SE, t -stat, R^2 and Bias.

Year	α_1	α_2	α_3	β_1	SE	t -stat	R^2	Bias
2000	0.1120	0.6499	0.2379	0.9883	0.0069	143.165	0.6362	-1.088e-4
2001	0.1340	0.7598	0.1061	0.9987	0.0077	129.88	0.7029	-1.186e-4
2002	0.1789	0.7458	0.0752	0.9816	0.0089	109.21	0.7455	-3.837e-4
2003	0.1283	0.7451	0.1265	1.0038	0.0074	134.91	0.7980	3.353e-5

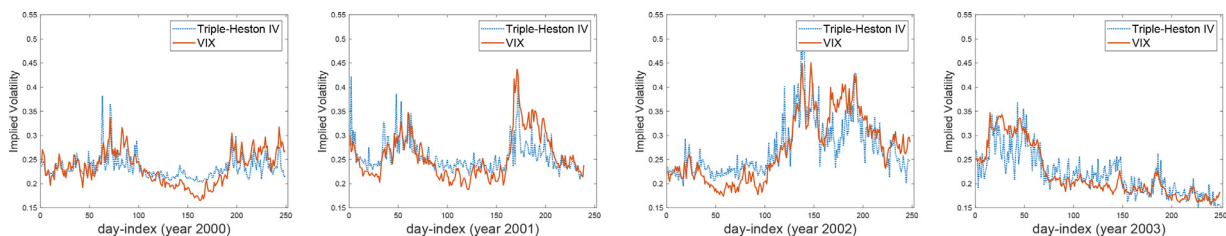


Fig. 8. Each panel contains the VIX time series and the model implied volatility $\hat{\Sigma}_{2,TH}$ (i.e., Eq. (90) – Triple Heston model) as a function of day. The model parameters are in Table 13.

U.S. GDP growth, which registered 4.1% in 2000, 1.1% in 2001, 1.7% in 2002 and 2.9% in 2003, i.e., the long-term volatility is higher in 2001 and 2002 when the GDP experiences a decline. The third factor may thus have macro-economic significance.

This result is not surprising since other studies have shown a correlation between GDP growth and stock market returns (see, Ritter, 2005 and the references therein; Cournéde & Denk, 2015)¹².

¹² Real U.S. GDP growth data have been downloaded from <https://www.statista.com/statistics/188165/annual-gdp-growth-of-the-united-states-since-1990> ; S&P 500 annual returns are from <https://www.macrotrends.net/2526/sp-500-historical-annual-returns>.

7. Conclusions

This paper introduces an approach to extract the Gaussian kernel behind the multi-factor Heston model, which allows a clear connection of the prices of European option contracts in the multi-factor Heston framework to the corresponding prices in the Black-Scholes model. Our simple formulas illustrate how the option prices and implied volatility respond to changes in model parameters. A series of numerical exercises shows that our formulas are accurate, computationally efficient, and easy to calibrate. We numerically demonstrate that our approximations compare favourably with other pricing formulas available in the literature, such as those of Pacati et al. (2018) and Veng et al. (2019), when we use them to calibrate the model parameters to the implied volatility and forecast the option prices one day ahead.

The approach proposed in this paper, while applied only to the multi-factor Heston framework and implemented for vanilla contracts, is more generally valid. Extensions to exotic derivatives whose payoff allows for a closed or semi-closed form in the Black–Scholes framework would be straightforward. More importantly, the representation of the marginal density function as a convolution with an appropriate Gaussian kernel applies to any model for which an analytically tractable characteristic function exists, including affine stochastic volatility, exponential Lévy models, and jump diffusion models. We plan to explore the implications of our representation formulas, and related asymptotic expansions, more generally for this broader class of models and contracts in future work. We also defer to future work a detailed study of the potential advantages of the convolution formulas in terms of computing option prices exactly via numerical integration. In fact, the convolution formula allows us to price any derivative as the convolution of the corresponding price in a time-dependent Black–Scholes framework and the function \mathcal{L}_γ (in the case of the Gaussian kernel \mathcal{G}_{Γ_0}) or \mathcal{L}_γ^* (in the case of the Gaussian kernel \mathcal{G}_{Γ_2}), which do not depend on the payoff of the contract. A comparison of the performance of these formulas for option pricing and those derived from Recchioni and Sun (2016) deserves further investigation. Additionally, the use of Γ_2 to estimate the variance risk premium from the VIX and S&P 500 indices and to price VIX options is worthy of further rigorous analysis.

The results of this work, and in particular the decomposition of the option prices and implied volatility in terms of the Greeks of the options and higher-order risks, may have applications in other areas, such as portfolio management and asset allocation.

Appendix A. Proofs

Detailed proofs of all the results are provided in the Supplementary material. Here, we provide the most relevant points of each proof.

A.1. Proof of Theorem 2.1

We recall the backward Kolmogorov equation satisfied by the function M given in (11) as a function of the past log-price x and time t :

$$-\frac{\partial M}{\partial t} = \frac{1}{2} \sum_{j=1}^n v_j \frac{\partial^2 M}{\partial x^2} + \frac{1}{2} \sum_{j=1}^n \gamma_j^2 v_j \frac{\partial^2 M}{\partial v_j^2} + \sum_{j=1}^n \gamma_j \rho_j v_j \frac{\partial^2 M}{\partial x \partial v_j} + \sum_{j=1}^n \chi_j (v_j^* - v_j) \frac{\partial M}{\partial v_j} + \left(r(t) - \frac{1}{2} \sum_{j=1}^n v_j \right) \frac{\partial M}{\partial x} \tag{92}$$

with final condition

$$M(x, \underline{v}, t', x', t') = \delta(x - x'), \tag{93}$$

where $\delta(\cdot)$ is the Dirac delta function. We look for M in the form

$$M(x, \underline{v}, t, x', t') = \frac{1}{2\pi} \int_{-\infty}^{+\infty} e^{ik(x'-x) - ik \int_t^{t'} r(s) ds + Q(k, t, t', \underline{v}; \underline{\Theta}_v)} dk, \quad x, x' \in \mathbb{R}, \quad \underline{v} \in \mathbb{R}^{n+}, \tag{94}$$

$t, t' \geq 0, t' - t > 0,$

where Q is defined as

$$Q(t' - t, \underline{v}, k; \underline{\Theta}_v) = A(k, t, t') - \sum_{j=1}^n v_j B_j(k, t, t'). \tag{95}$$

Substituting Eq. (95) into Eq. (92), we obtain the Riccati equation satisfied by A and B_j (see Duffie et al., 2000; Fatone et al., 2009):

$$\frac{d}{dt} A = \sum_{j=1}^n \chi_j v_j^* B_j, \tag{96}$$

and for $j = 1, 2, \dots, n,$

$$\frac{d}{dt} B_j = \chi_j B_j + \frac{1}{2} \gamma_j^2 B_j^2 + ik \rho_j \gamma_j B_j - \frac{k^2}{2} + \frac{ik}{2}, \tag{97}$$

with final conditions

$$A(k, t', t') = 0, \quad B_j(k, t', t') = 0, \quad j = 1, 2, \dots, n. \tag{98}$$

We now rewrite Q in Eq. (95). Eqs. (96) and (98) yield

$$A(k, t, t') = \sum_{j=1}^n A_j(k, t, t') = - \sum_{j=1}^n \chi_j v_j^* \int_t^{t'} B_j(k, \tau, t') d\tau, \tag{99}$$

where

$$A_j(k, t, t') = - \chi_j v_j^* \int_t^{t'} B_j(k, \tau, t') d\tau, \tag{100}$$

while Eqs. (97) and (98) yield

$$\begin{aligned} \frac{d}{dt} (e^{-\chi_j t} B_j(k, t, t')) &= e^{-\chi_j t} \left(ik \rho_j \gamma_j B_j(k, t, t') + \frac{1}{2} \gamma_j^2 B_j^2(k, t, t') \right) \\ &\quad - e^{-\chi_j t} \left(\frac{k^2}{2} - ik \right). \end{aligned} \tag{101}$$

Since $B_j(k, t', t') = 0,$ integration yields:

$$\begin{aligned} B_j(k, t, t') &= - \int_t^{t'} e^{-\chi_j (s-t)} \left[ik \rho_j \gamma_j B_j(k, s, t') + \frac{1}{2} \gamma_j^2 B_j^2(k, s, t') \right] ds \\ &\quad - \left(-\frac{k^2}{2} + ik \right) \int_t^{t'} e^{-\chi_j (s-t)} ds. \end{aligned} \tag{102}$$

From Eqs. (99) and (102), we obtain:

$$\begin{aligned} A_j(k, t, t') &= - \chi_j v_j^* \int_t^{t'} B_j(k, \tau, t') d\tau \\ &= \chi_j v_j^* \int_t^{t'} \left[\int_\tau^{t'} \left[e^{-\chi_j (s-\tau)} \left(ik \rho_j \gamma_j B_j(k, s, t') + \frac{1}{2} \gamma_j^2 B_j^2(k, s, t') \right) \right. \right. \\ &\quad \left. \left. + e^{-\chi_j (s-\tau)} \left(-\frac{k^2}{2} + ik \right) \right] ds \right] d\tau. \end{aligned} \tag{103}$$

so by inverting the integration order and using Eqs. (102) and (103), we obtain

$$\begin{aligned} A_j(k, t, t') - v_j B_j(k, t, t') &= - \left(\frac{k^2}{2} - ik \right) \int_t^{t'} \left[v_j^* (1 - e^{-\chi_j (s-t)}) + v_j e^{-\chi_j (s-t)} \right] ds \\ &\quad + \int_t^{t'} \left[ik \rho_j \gamma_j B_j(k, s, t') + \frac{1}{2} \gamma_j^2 B_j^2(k, s, t') \right] \\ &\quad \times \left[v_j^* (1 - e^{-\chi_j (s-t)}) + v_j e^{-\chi_j (s-t)} \right] ds \end{aligned} \tag{104}$$

Noting that v_j is the variance at time t and the conditional mean of the point-in-time volatility given in (7), Eq. (104) becomes

$$\begin{aligned}
 &A_j(k, t, t') - v_j B_j(k, t, t') \\
 &= \int_t^{t'} \left[\iota k \rho_j \gamma_j B_j(k, s, t') + \frac{1}{2} \gamma_j^2 B_j^2(k, s, t') + \left(-\frac{k^2}{2} + \iota \frac{k}{2} \right) \right] \\
 &\quad \times E(v_{j,s} | \mathcal{F}_t) ds. \tag{105}
 \end{aligned}$$

Eq. (105) implies

$$\begin{aligned}
 &\sum_{j=1}^n (A_j(k, t, t') - v_j B_j(k, t, t')) \\
 &= -\frac{(k^2 - \iota k)}{2} \Gamma_0(t, t') + \sum_{j=1}^n \int_t^{t'} E(v_{j,s} | \mathcal{F}_t) \\
 &\quad \times \left[\frac{1}{2} \gamma_j^2 B_j^2(k, s, t') + \iota k \rho_j \gamma_j B_j(k, s, t') \right] ds, \tag{106}
 \end{aligned}$$

where Γ_0 is given in formula (16). This proves formula (11).

$$\begin{aligned}
 &M_2(x, \underline{v}, t, x', t') \\
 &= \frac{1}{2\pi} \int_{-\infty}^{+\infty} e^{ik \left[(x'-x) - \int_t^{t'} r(s) ds + \frac{1}{2} \Gamma_2(t, t') \right] - \frac{1}{2} \Gamma_2(t, t') k^2} e^{S_1(t, t')(ik^3 + \iota k) + S_2(t, t')(k^4 - 2\iota k^3 - \iota k) + S_{2c}(t, t')(k^4 - \iota k^3)} dk, \tag{115}
 \end{aligned}$$

Formula (15) follows if we apply the convolution theorem for the inverse Fourier transform to formula (11).

The proof of Eq. (12) follows using a standard approach for the Riccati equations. This concludes the proof. \square

A.2. Proof of Theorem 2.2

Eqs. (18) and (23) follow from Eq. (11) by adding and subtracting the quantity $(k^2 - \iota k)(-S_1(t, t') + S_2(t, t'))$, where S_1 and S_2 are given in Eqs. (21) and (22), and applying the convolution theorem for the inverse Fourier transform. We now prove the expansion of \mathcal{L}_γ^* in Eq. (24). To this end, we prove the following expansion for B_j (12):

$$\begin{aligned}
 &B_j(k, t, t') = B_{j,0}(k, t, t') + \gamma_j B_{j,1}(k, t, t') \\
 &\quad + O(\gamma_j^2), \quad \gamma_j \rightarrow 0^+, \quad t < t'. \tag{107}
 \end{aligned}$$

Substituting Eq. (107) into (97) and equating the coefficients of the same powers of γ_j , we obtain that the zero- and first-order terms $B_{j,0}$ and $B_{j,1}$ solve the following equations:

$$\frac{dB_{j,0}}{dt}(k, t, t') - \chi_j B_{j,0}(k, t, t') = -\frac{k^2}{2} + \frac{\iota k}{2} \tag{108}$$

$$\frac{dB_{j,1}}{dt}(k, t, t') - \chi_j B_{j,1}(k, t, t') = \iota k \rho_j B_{j,0}(k, t, t'), \tag{109}$$

with final conditions

$$B_{j,0}(k, t', t') = 0, \quad B_{j,1}(k, t', t') = 0. \tag{110}$$

The solution $B_{j,0}$ is

$$B_{j,0}(k, t, t') = \frac{1}{2} (k^2 - \iota k) \frac{(1 - e^{-\chi_j(t'-t)})}{\chi_j} = \frac{1}{2} (k^2 - \iota k) \psi_j(t, t'), \tag{111}$$

where ψ_j is given in (28), while $B_{j,1}$ is

$$B_{j,1}(k, t, t') = -\frac{\iota k \rho_j}{2 \chi_j} (k^2 - \iota k) f_j(t, t'), \tag{112}$$

where f_j is defined as

$$\begin{aligned}
 &f_j(t, t') = (\psi_j(t' - t) - (t' - t)e^{-\chi_j(t'-t)}) \\
 &= e^{-\chi_j(t'-t)} \int_t^{t'} (e^{\chi_j(t'-s)} - 1) ds \quad t < t'. \tag{113}
 \end{aligned}$$

Using Eq. (107) in Eq. (23), we obtain

$$\begin{aligned}
 &H_j(k, s, t') = \frac{\gamma_j^2}{2} \left(\frac{\psi_j^2(s, t')}{4} (k^2 - \iota k)^2 + \frac{(k^2 - \iota k)}{4} \psi_j^2(s, t') \right) \\
 &\quad + \iota k \rho_j \gamma_j \left(\frac{\psi_j(s, t')}{2} (k^2 - \iota k) + \frac{\gamma_j \rho_j}{2 \chi_j} f_j(s, t') (-\iota k^3 - k^2) \right. \\
 &\quad \left. + \frac{(\iota k + 1)}{2} \psi_j(s, t') \right) + o(\gamma_j^2), \quad \gamma_j \rightarrow 0^+. \tag{114}
 \end{aligned}$$

Proceeding similarly (see online supplementary material), we obtain Eq. (24). This concludes the proof. \square

A.3. Proof of Corollary 2.4

We sketch the proof for the first three-order terms, \mathcal{G}_{Γ_2} , \mathcal{M}_1 and \mathcal{M}_2 . From Theorem 2.2 and using the expansion in formula (24) up to the second order, we have:

where S_1 is a linearly homogeneous function of the vols of vols, while S_2 and S_{2c} are homogeneous functions of degree two. We compute the first three terms of the expansion in powers of the vols of vols of the function

$$\mathcal{E}(\underline{\gamma}) = e^{S_1(t, t')(ik^3 + \iota k) + S_2(t, t')(k^4 - 2\iota k^3 - \iota k) + S_{2c}(t, t')(k^4 - \iota k^3)}. \tag{116}$$

The proof follows based on:

$$\begin{aligned}
 &\mathcal{E}|_{\underline{\gamma}=0} = 1, \quad \frac{\partial \mathcal{E}}{\partial \gamma_j} \Big|_{\underline{\gamma}=0} = (\iota k^3 + \iota k) \frac{\partial S_1}{\partial \gamma_j}, \\
 &\frac{\partial^2 \mathcal{E}}{\partial \gamma_j \gamma_i} \Big|_{\underline{\gamma}=0} = (\iota k^3 + \iota k)^2 \frac{\partial S_1}{\partial \gamma_i} \frac{\partial S_1}{\partial \gamma_j}, \quad i \neq j, \tag{117}
 \end{aligned}$$

and

$$\begin{aligned}
 &\frac{\partial^2 \mathcal{E}}{\partial \gamma_j^2} \Big|_{\underline{\gamma}=0} = (\iota k^3 + \iota k)^2 \left(\frac{\partial S_1}{\partial \gamma_j} \right)^2 \\
 &\quad + \frac{\partial^2 S_2}{\partial \gamma_j^2} (k^4 - 2\iota k^3 - \iota k) + \frac{\partial^2 S_{2c}}{\partial \gamma_j^2} (k^4 - \iota k^3). \tag{118}
 \end{aligned}$$

This concludes the proof. \square

A.4. Proof of Proposition 3.1

The proof follows by substituting M with its third-order approximation and integrating by parts. Details on why we obtain an explicit formula for the corrections terms are given in the online supplementary material. As mentioned above, the correction $\mathcal{R}_{m,MH}$, $m = 1, 2, 3$ for the call option is the same as the put correction since there are two changes of sign: one due to the payoff function and the other due to integration by parts over the interval $(-\infty, \log E)$ rather than $(\log E, +\infty)$. This concludes the proof. \square

A.5. Proof of Proposition 3.2

Let us now prove formula (62). When $\underline{\gamma} = 0$ (i.e., all vols of vols are equal to zero), we have $\Gamma_2(0, T)$ equal to $\Gamma_0(0, T)$ and the correction terms $\mathcal{R}_1, \mathcal{R}_2$ equal to zero, which implies

$$\Sigma_1(\underline{0}) = \sqrt{\Gamma_0(0, T)}. \tag{119}$$

We compute the first- and second-order partial derivatives of both sides of Eq. (61) with respect to γ_j , $j = 1, 2, \dots, n$, and we evaluate the derivatives at $\underline{\gamma} = 0$. Using the Black-Scholes Vega (i.e.,

$\frac{\partial C_{BS}}{\partial \sigma} |_{\gamma=0} = S_0 N'(d_1(\Gamma_0)) \sqrt{T}$ and the derivatives of Γ_2 , S_1 and S_2 with respect to γ_j , we obtain

$$\begin{aligned} \frac{\partial}{\partial \gamma_j} \Sigma_1 \Big|_{\gamma=0} &= \frac{\rho_j \mathcal{T}_j(0, T)}{2\chi_j} \frac{1}{\sqrt{\Gamma_0(0, T)}} \left(+\frac{1}{2} - \frac{(\ln(S_0/E) + \int_0^T r(s) ds)}{\Gamma_0(0, T)} \right), \end{aligned} \tag{120}$$

thus implying

$$\begin{aligned} \Sigma_1(\underline{\gamma}) &= \sqrt{\Gamma_0(0, T)} - \frac{1}{\sqrt{\Gamma_0(0, T)}} \left(\frac{(\ln(S_0/E) + \int_0^T r(s) ds)}{\Gamma_0(0, T)} - \frac{1}{2} \right) \\ &\times \sum_{j=1}^n \frac{\gamma_j \rho_j}{2\chi_j} \mathcal{T}_j(0, T). \end{aligned} \tag{121}$$

To prove Eq. (63), we proceed by computing the second-order derivatives, which are given by:

$$\left(\frac{\partial \Sigma_2}{\partial \gamma_j} \right) \Big|_{\gamma=0} = \frac{1}{\sqrt{\Gamma_0}} \left(\frac{\partial S_1}{\partial \gamma_j} \right) \frac{(m_E + \frac{1}{2}\Gamma_0)}{\Gamma_0}. \tag{122}$$

An easy, but involved, computation illustrated in the online supplementary material shows that the addenda containing powers of $(m_E + \frac{1}{2}\Gamma_0)$ higher than two are cancelled by the addenda involving the Black–Scholes Vomma. In fact, we have:

$$\begin{aligned} \frac{\partial^2}{\partial \gamma_j^2} \Sigma_2(0) &= \frac{1}{\sqrt{\Gamma_0}} \left(\frac{\partial S_1}{\partial \gamma_j} \right)^2 \\ &\times \left[-\frac{6}{\Gamma_0} \frac{(m_E + \frac{1}{2}\Gamma_0)^2}{\Gamma_0^2} + \frac{3}{\Gamma_0} \frac{(m_E + \frac{1}{2}\Gamma_0)}{\Gamma_0} + \frac{3}{\Gamma_0^2} \right] \\ &+ \frac{\partial^2 S_2}{\partial \gamma_j^2} \frac{1}{\sqrt{\Gamma_0}} \left[\frac{(m_E + \frac{1}{2}\Gamma_0)^2}{\Gamma_0^2} - \frac{(m_E + \frac{1}{2}\Gamma_0)}{\Gamma_0} - \frac{1}{\Gamma_0} \right] \\ &+ \frac{\partial^2 S_{2c}}{\partial \gamma_j^2} \frac{1}{\sqrt{\Gamma_0}} \left[\frac{(m_E + \frac{1}{2}\Gamma_0)^2}{\Gamma_0^2} - \frac{1}{\Gamma_0} \right]. \end{aligned} \tag{123}$$

Proceeding in a similar manner, we obtain mixed-order mixed derivatives:

$$\begin{aligned} \frac{\partial^2}{\partial \gamma_j \partial \gamma_k} \Sigma_2(0) &= \frac{1}{\sqrt{\Gamma_0}} \left(\frac{\partial S_1}{\partial \gamma_j} \right) \left(\frac{\partial S_1}{\partial \gamma_k} \right) \\ &\times \left[-\frac{6}{\Gamma_0} \frac{(m_E + \frac{1}{2}\Gamma_0)^2}{\Gamma_0^2} + \frac{3}{\Gamma_0} \frac{(m_E + \frac{1}{2}\Gamma_0)}{\Gamma_0} + \frac{3}{\Gamma_0^2} \right]. \end{aligned} \tag{124}$$

The thesis follows since we have $S_2 = \frac{1}{2} \sum_{j=1}^n \gamma_j^2 \frac{\partial^2 S_2}{\partial \gamma_j^2}$, $S_{2c} = \frac{1}{2} \sum_{j=1}^n \gamma_j^2 \frac{\partial^2 S_{2c}}{\partial \gamma_j^2}$ and $S_1^2 = \sum_{j=1}^n \sum_{k=1}^n \gamma_j \gamma_k \frac{\partial S_1}{\partial \gamma_j} \frac{\partial S_1}{\partial \gamma_k}$. This concludes the proof. A more detailed proof is provided in the supplementary material section available online. □

Appendix B. Formulas in terms of the Gaussian kernel \mathcal{G}_{Γ_0}

In this section, we provide the second-order approximations of the option prices starting from the representation of the marginal density function given by formula (11).

Corollary B.1. *The following expansion of the conditional marginal M in powers of $\underline{\gamma}$ as $\|\underline{\gamma}\| \rightarrow 0$ holds:*

$$\begin{aligned} M(x, \underline{v}, t, x', t') &= \mathcal{G}_{\Gamma_0}(x' - x, t, t') + \mathcal{M}_{1,0}(x, \underline{v}, t, x', t') + \mathcal{M}_{2,0}(x, \underline{v}, t, x', t') \\ &+ o(\|\underline{\gamma}\|^2), \quad \|\underline{\gamma}\| \rightarrow 0, \end{aligned} \tag{125}$$

where $\mathcal{M}_{1,0}$ and $\mathcal{M}_{2,0}$ are given by

$$\begin{aligned} \mathcal{M}_{1,0}(x, \underline{v}, t, x', t') &= S_1(t, t') \left[-\frac{d^3 \mathcal{G}_{\Gamma_0}}{dx'^3}(x' - x, t, t') - \frac{d^2 \mathcal{G}_{\Gamma_0}}{dx'^2}(x' - x, t, t') \right], \end{aligned} \tag{126}$$

$$\begin{aligned} \mathcal{M}_{2,0}(x, \underline{v}, t, x', t') &= +S_2(t, t') \\ &\times \left[\frac{d^4 \mathcal{G}_{\Gamma_0}}{dx'^4}(x' - x, t, t') + 2 \frac{d^3 \mathcal{G}_{\Gamma_0}}{dx'^3}(x' - x, t, t') + \frac{d^2 \mathcal{G}_{\Gamma_0}}{dx'^2}(x' - x, t, t') \right] \\ &+ S_{2c}(t, t') \left[\frac{d^4 \mathcal{G}_{\Gamma_0}}{dx'^4}(x' - x, t, t') + \frac{d^3 \mathcal{G}_{\Gamma_0}}{dx'^3}(x' - x, t, t') \right] \\ &+ \frac{1}{2} S_1^2(t, t') \left[\frac{d^6 \mathcal{G}_{\Gamma_0}}{dx'^6}(x' - x, t, t') + 2 \frac{d^5 \mathcal{G}_{\Gamma_0}}{dx'^5}(x' - x, t, t') \right. \\ &\left. + \frac{d^4 \mathcal{G}_{\Gamma_0}}{dx'^4}(x' - x, t, t') \right]. \end{aligned} \tag{127}$$

Here, S_1 is given by (21), \mathcal{G}_{Γ_0} is the Gaussian kernel defined in (10), and S_2 and S_{2c} are given in (22) and (25), respectively. The following expansion holds for the European vanilla call and put option prices, C_{MH} and P_{MH} , with spot price S_0 , maturity T , strike price E and discount factor $B(T)$:

$$\begin{aligned} C_{MH}(S_0, T, E) &= C_{BS} \left(S_0, T, E, \frac{\sqrt{\Gamma_0}}{\sqrt{T}} \right) + \mathcal{R}_{1,0}(S_0, T, E) \\ &+ \mathcal{R}_{2,0}(S_0, T, E) + o(\|\underline{\gamma}\|^2), \quad \|\underline{\gamma}\| \rightarrow 0, \end{aligned} \tag{128}$$

and

$$\begin{aligned} P_{MH}(S_0, T, E) &= P_{BS} \left(S_0, T, E, \frac{\sqrt{\Gamma_0}}{\sqrt{T}} \right) \\ &+ \mathcal{R}_{1,0}(S_0, T, E) + \mathcal{R}_{2,0}(S_0, T, E) + o(\|\underline{\gamma}\|^2), \quad \|\underline{\gamma}\| \rightarrow 0. \end{aligned} \tag{129}$$

Here, $\Gamma_0(0, T)$ is given by (16), C_{BS} and P_{BS} denote the classic Black–Scholes formulas, as in (45) and (46), and $\mathcal{R}_{1,0}$ and $\mathcal{R}_{2,0}$ are the corrections to the standard Black–Scholes formula due to the contribution of the first- and second-order terms of the expansion in powers of the vols of vols of the marginal density function:

$$\begin{aligned} \mathcal{R}_{1,0}(S_0, T, E) &= B(T) E \frac{S_1(0, T)}{\Gamma_0(0, T)} \\ &\times \left(+ \log \left(\frac{E}{S_0 e^{\int_0^T r(s) ds}} \right) + \frac{1}{2} \Gamma_0(0, T) \right) \mathcal{G}_{\Gamma_0} \\ &\times (\log(E/S_0), 0, T), \end{aligned} \tag{130}$$

and

$$\begin{aligned} \mathcal{R}_{2,0}(S_0, T, E) &= S_2(0, T) B(T) E \left[\frac{d^2 \mathcal{G}_{\Gamma_0}}{dx'^2} + \frac{d \mathcal{G}_{\Gamma_0}}{dx'} \right] (\log(E/S_0), 0, T) \\ &+ S_{2c}(0, T) B(T) E \frac{d^2 \mathcal{G}_{\Gamma_0}}{dx'^2} (\log(E/S_0), 0, T) + \frac{1}{2} S_1^2(0, T) B(T) E \\ &\times \left[\frac{d^4 \mathcal{G}_{\Gamma_0}}{dx'^4} + \frac{d^3 \mathcal{G}_{\Gamma_0}}{dx'^3} \right] (\log(E/S_0), 0, T). \end{aligned} \tag{131}$$

Proof. The proof is based on the proof of Corollary 2.4 and Proposition 3.2 for the expansion in powers the vols of vols considering that the Fourier transform of $\mathcal{L}_{\underline{\gamma}}$ is equal to the product of the Fourier transform of $\mathcal{L}_{\underline{\gamma}}^*$ multiplied by $e^{(k^2 - ik)(S_1(t, t') - S_2(t, t'))}$. □

Appendix C. Formulas derived from Recchioni and Sun (2016)

Starting from the approach of Recchioni and Sun (2016), with a straightforward computation, the following explicit formulas for the option prices in the multi-factor Heston model are derived (see the online Supplementary material):

$$C_{MH}(S_0, T, E) = e^{(q-1) \int_0^T r(s) ds} \frac{S_0}{2\pi} \times \int_{-\infty}^{+\infty} \frac{\left(\frac{S_0}{E}\right)^{(q-1-ik)} e^{-ik \int_0^T r(s) ds} e^{Q_{v,q}(T, v_0, k; \Theta_v)}}{-k^2 - (2q-1)ik + q(q-1)} dk, \tag{132}$$

and

$$P_{MH}(S_0, T, E) = e^{(q-1) \int_0^T r(s) ds} \frac{S_0}{2\pi} \times \int_{-\infty}^{+\infty} \frac{\left(\frac{S_0}{E}\right)^{(q-1-ik)} e^{-ik \int_0^T r(s) ds} e^{Q_{v,q}(T, v_0, k; \Theta_v)}}{-k^2 - (2q-1)ik + q(q-1)} dk, \tag{133}$$

where, in the case of the Heston/double Heston models, $Q_{v,q}$ is the elementary function given by

$$Q_{v,q}(t' - t, v, k; \Theta_v) = \sum_{j=1}^n -(2\chi_j v_j^* / \gamma_j^2) \ln(s_{q,v_j,b} / (2\zeta_{q,v_j})) - (2\chi_j v_j^* / \gamma_j^2) (\zeta_{q,v_j} + \mu_{q,v_j})(t' - t) - (2v_j / \gamma_j^2) (\zeta_{q,v_j}^2 - \mu_{q,v_j}^2) s_{q,v_j,g} / s_{q,v_j,b},$$

with μ_{q,v_j} , ζ_{q,v_j} , $s_{q,v_j,g}$, and $s_{q,v_j,b}$ defined as follows:

$$\mu_{q,v_j} = -\frac{1}{2}(\chi_j + (1k - q) \gamma_j \rho_j),$$

$$\zeta_{q,v_j} = \frac{1}{2} [4\mu_{q,v_j}^2 + 2\gamma_j^2 \varphi_q(k)]^{1/2}, \tag{134}$$

$$s_{q,v_j,g} = 1 - e^{-2\zeta_{q,v_j}(t'-t)},$$

$$s_{q,v_j,b} = (\zeta_{q,v_j} + \mu_{q,v_j}) e^{-2\zeta_{q,v_j}(t'-t)} + (\zeta_{q,v_j} - \mu_{q,v_j}). \tag{135}$$

The quantity φ_q in Eq. (134) is given by $\varphi_q(k) = \frac{k^2}{2} + ik(2q-1) - \frac{1}{2}(q^2 - q)$, $k \in \mathbb{R}$. Formulas (132) and (133) differ in the calculations of call and put prices only in the choice of the real parameter q , which should be larger than one to compute a call option and smaller than 0 to compute a put option. These formulas are in line with the Lewis regularization technique (i.e., Lewis, 2000, Chap 2), whose integrand functions are smooth functions.

Supplementary material

Supplementary material associated with this article can be found, in the online version, at doi:10.1016/j.ejor.2020.11.050.

References

Abadir, K. M., & Rockinger, M. (2003). Density functionals with an option-pricing application. *Econometric Theory*, 19(5), 778–811.

Ait-Sahalia, Y. (2002). Maximum likelihood estimation of discretely sampled diffusions: A closed-form approximation approach. *Econometrica*, 70(1), 223–262.

Alòs, E., León, J. A., & Vives, J. (2007). On the short-time behavior of the implied volatility for jump-diffusion models with stochastic volatility. *Finance Stoch*, 11, 571–589.

Antonelli, F., & Scarlatti, S. (2009). Pricing options under stochastic volatility: A power series approach. *Finance and Stochastics*, 13(2), 269–303.

Benhamou, E., Gobet, E., & Miri, M. (2009). Smart expansion and fast calibration for jump diffusions. *Finance and Stochastics*, 13(4), 563–589.

Berestycki, H., Busca, J., & Florent, I. (2004). Computing the implied volatility in stochastic volatility models. *Communications on Pure and Applied Mathematics*, 57(10), 1352–1373.

Bergomi, L., & Guyon, J. (2011). The smile in stochastic volatility models. Available at SSRN: <https://ssrn.com/abstract=1967470> or <https://doi.org/10.2139/ssrn.1967470>.

Bollerslev, T., Tauchen, G., & Zhou, H. (2009). Expected stock returns and variance risk premia. *Review Financial Studies*, 22, 4463–4492.

Bon Bondarenko, O. (2014). Variance trading and market price of variance risk. *Journal of Econometrics*, 180(1), 81–97.

Carr, P., & Wu, L. (2009). Variance risk premiums. *Review Financial Studies*, 22(13)–1341.

Chow, V., Jiang, W., & Li, J. (2020). Does VIX truly measure return volatility? In *Handbook of financial econometrics, mathematics, statistics, and machine learning: II*. World Scientific Publishing. ISBN: 978-981-12-0238-4, <https://doi.org/10.1142/11335>.

Christoffersen, P., Heston, S., & Jacobs, K. (2009). The shape and term structure of the index option smirk: Why multifactor stochastic volatility models work so well. *Management Science*, 55, 1914–1932.

Corsi, F., Fusari, N., & La Vecchia, D. (2013). Realizing smiles: Options pricing with realized volatility. *Journal of Financial Economics*, 107, 284–304.

Cournède, B., & Denk, O. (2015). *Finance and economic growth in OECD and g20 countries*. Paris: O. OECD Economics Department Working Papers, No. 1223.

Cui, Y., del Bano Rollin, S., & Germano, G. (2017). Full and fast calibration of the Heston stochastic volatility model. *European Journal of Operational Research*, 263(2), 625–638.

Das, S. R., & Sundaram, R. K. (1999). Of smiles and smirks: A term-structure perspective. *Journal of Financial and Quantitative Analysis*, 34(2), 211–240.

Date, P., & Islyayev, S. (2015). A fast calibrating volatility model for option pricing. *European Journal of Operational Research*, 243, 599–606.

Demeterfi, K., Derman, E., Kamal, M., & Zou, J. (1999). *More than you ever wanted to know about volatility swaps*. Goldman Sachs. Quantitative Strategies Research Notes.

Drimus, G. G. (2011). Closed-form convexity and cross-convexity adjustments for Heston prices. *Quantitative Finance*, 11(8), 1137–1149.

Duffie, D., Pan, J., & Singleton, K. (2000). Transform analysis and asset pricing for affine jump diffusions. *Econometrica*, 68, 1343–1376.

Egorov, A. V., Li, H., & Xu, Y. (2003). Maximum likelihood estimation of time-inhomogeneous diffusions. *Journal of Econometrics*, 114(1), 107–139.

Fatone, L., Mariani, F., Recchioni, M. C., & Zirilli, F. (2009). An explicitly solvable multi-scale stochastic volatility model: Option pricing and calibration. *Journal of Futures Markets*, 29(9), 862–893.

Fatone, L., Mariani, F., Recchioni, M. C., & Zirilli, F. (2013). The analysis of real data using a multiscale stochastic volatility model. *European Financial Management*, 19(1), 153–179.

Forde, M., & Jacquier, A. (2009). Small-time asymptotics for implied volatility under the Heston model. *International Journal of Theoretical and Applied Finance*, 12(6), 861–876.

Forde, M., & Jacquier, A. (2011). Small-time asymptotics for an uncorrelated Local-Stochastic volatility model. *Applied Mathematical Finance*, 18(6), 517–535.

Fouque, J.-P., & Lorig, M. J. (2011). A fast mean-reverting correction to Heston's stochastic volatility model. *SIAM Journal on Financial Mathematics*, 2(1), 221–254.

Fouque, J.-P., Papanicolaou, G., Sircar, R., & Solna, K. (2011). *Multiscale stochastic volatility for equity, interest rate, and credit derivatives*. Cambridge University Press, 2011.

Friz, P. K., Gerhold, S., Gulisashvili, A., & Sturm, S. (2011). On refined volatility smile expansion in the Heston model. *Quantitative Finance*, 11(8), 1151–1164.

Heston, S. L. (1993). A closed-form solution for options with stochastic volatility with applications to bond and currency options. *The Review of Financial Studies*, 6, 327–343.

Huang, D., Schlag, C., Shaliastovich, I., & Thimme, J. (2020). Volatility-of-volatility risk. *Journal of Financial and Quantitative Analysis*.

Jacquier, A., & Lorig, M. (2015). From characteristic functions to implied volatility expansions *Advances in Applied Probability*, 47, 837–857.

Jiang, G., & Tian, Y. S. (2005). The model-free implied volatility and its information content. *Review of Financial Studies*, 18(4), 1305–1342. 2005.

Jiang, G., & Tian, Y. S. (2007). Extracting model-free volatility from option prices: An examination of the VIX index. *Journal of Derivatives Spring*, 1–26.

Kristensen, D., & Mele, A. (2011). Adding and subtracting Black-Scholes: A new approach to approximating derivative prices in continuous-time models. *Journal of Financial Economics*, 102, 390–415.

Lee, R. W. (2001). Implied and local volatilities under stochastic volatility. *International Journal of Theoretical and Applied Finance*, 4(1), 45–89.

Lewis, A. L. (2000). *Option pricing under stochastic volatility, with mathematica code*. Finance Press. ISBN: 0967637201.

Li, M. (2006). You don't have to bother Newton for implied volatility (November, 2006). Available at SSRN: <https://ssrn.com/abstract=952727> or <https://doi.org/10.2139/ssrn.952727>.

Li, M. (2008). Approximate inversion of the Black-Scholes formula using rational functions. *European Journal of Operational Research*, 185(2), 743–759.

Lorig, M., Pagliarini, S., & Pascucci, A. (2017). Explicit implied volatilities for multi-factor local-stochastic volatility models. *Mathematical Finance*, 27(3), 926–960.

Medvedev, A., & Scaillet, O. (2007). Approximation and calibration of short-term implied volatilities under jump-diffusion stochastic volatility. *Review of Financial Studies*, 20(2), 427–459.

Nagashima, K., Chung, T.-K., & Tanaka, K. (2014). Asymptotic expansion formula of option price under multifactor Heston model. *Asia-Pacific Financial Market*, 21, 351–396.

- Nicolato, N., & Sloth, D. (2012). *Approximation of option prices under time-changed dynamics*. Aarhus University. Working Paper.
- Pacati, C., Renó, R., & Pompa, G. (2018). Smiling twice: the Heston++ model. *Journal of Banking and Finance*, 96, 185–206.
- Pagliarani, S., & Pascucci, A. (2013). Local Stochastic Volatility with Jumps: Analytical Approximations. *Int. J. Theor. Appl. Finan*, 16(8), 1–35.
- Recchioni, M. C., & Scoccia, A. (2000). A stochastic algorithm for constrained global optimization. *Journal of Global Optimization*, 16, 257–270.
- Recchioni, M. C., & Sun, Y. (2016). An explicitly solvable Heston model with stochastic interest rate. *European Journal of Operational Research*, 249, 359–377.
- Recchioni, M. C., & Tedeschi, G. (2017). From bond yield to macroeconomic instability: A parsimonious affine model. *European Journal of Operational Research*, 262(3), 1116–1135.
- Ritter, J. R. (2005). Economic growth and equity return. *Pacific-Basin Finance Journal*, 13(5), 489–503.
- Takahashi, A., & Yamada, T. (2015). On error estimates for asymptotic expansions with Malliavin weights-application to stochastic volatility model. *Math. Oper. Res.*, 40(3), 513–796.
- Veng, S., Yoon, J.-H., & Choi, S. Y. (2019). Multifactor Heston's stochastic volatility model for European option pricing. *Applied Stochastic Models in Business and Industry*, 35, 1202–1227.
- Wand, M. P., & Schucany, W. R. (1990). Gaussian-based kernels. *The Canadian Journal of Statistics/La Revue Canadienne de Statistique*, 18(3), 197–204.
- Yu, J. (2007). Closed-form likelihood approximation and estimation of jump-diffusions with an application to the realignment risk of the Chinese Yuan. *Journal of Econometrics*, 141(2), 1245–1280.
- Zhang, J. E., Shu, J., & M., B. (2010). The new market for volatility trading. *Journal of Futures Markets*, 30(9), 809–833.
- Zhang, J. E., Zhen, F., Sun, X., & Zhao, H. (2017). The skewness implied in the Heston model and its application. *Journal of Futures Markets*, 37(3), 211–237.
- Zhao, H., Zhang, J. E., & Chang, E. (2013). The relation between physical and risk-neutral cumulants. *International Review of Finance*, 13(3), 345–381. 2013.