

This pdf is a digital offprint of your contribution in Laffineur, R., van Wijngaarden G.J. (eds), *HYDOR. Water Resources and Management in the Aegean Bronze Age: Proceedings of the 20th Rencontre égéenne internationale/International Aegean Conference, University of Amsterdam, Amsterdam Centre for Ancient Studies & Archaeology, 11-16 June, 2024* (Aegaeum. Annales d'archéologie égéenne de l'Université de Liège et UT-PASP, 50)

ISBN 978-90-429-5588-2

[https://www.peeters-leuven.be/detail.php?search\\_key=9789042955882&series\\_number\\_str=50&lang=en](https://www.peeters-leuven.be/detail.php?search_key=9789042955882&series_number_str=50&lang=en)

The copyright on this publication belongs to Peeters Publishers.

As author you are licensed to make printed copies of the pdf or to send the unaltered pdf file to up to 50 relations. You may not publish this pdf on the World Wide Web – including websites such as academia.edu and open-access repositories – until three years after publication. Please ensure that anyone receiving an offprint from you observes these rules as well.

If you wish to publish your article immediately on open-access sites, please contact the publisher with regard to the payment of the article processing fee.

For queries about offprints, copyright and republication of your article, please contact the publisher via [peeters@peeters-leuven.be](mailto:peeters@peeters-leuven.be)

**AEGAEUM 50**

**Annales liégeoises et PASPiennes d'archéologie égéenne**

# **HYDOR**

## **WATER RESOURCES AND MANAGEMENT IN THE AEGEAN BRONZE AGE**

**Proceedings of the 20th Rencontre égéenne internationale/  
International Aegean Conference, University of Amsterdam,  
Amsterdam Centre for Ancient Studies & Archaeology**

**11-16 June, 2024**

Edited by Robert LAFFINEUR and Gert Jan van WIJNGAARDEN

PEETERS  
LEUVEN - LIÈGE  
2025

## CONTENTS

Preface	ix
<b>KEYNOTE LECTURE</b>	
Thomas F. TARTARON, <i>Water-worlds of the Aegean Bronze Age: Toward a Comprehensive Perspective</i>	3
<b>I. WATERSCAPES</b>	
Tristan CARTER, Shannon CREWSON, Justin A. HOLCOMB, Matthew C. HARDER, Emma LIPSETT, Kristine MALLINSON, Danica D. MIHAILOVIĆ, Vagia MASTROGIANNOPOULOU, and Demetris ATHANASOULIS, <i>From Neanderthal Camps to Later Bronze Age Ritual Landscape: Springs at Stelida, Naxos</i>	17
Giulia ALBERTAZZI, <i>The Culture / Nature Interplay Contribution to the Evolution of Fresh Water Management Systems in Bronze Age Cyprus: A Preliminary Survey</i>	25
Maia POMADÈRE and Maria Emanuela ALBERTI, <i>Malia and the Water: Sources, Uses and Management of Fresh Water in the Palatial Town</i>	37
Nicola CUCUZZA, <i>Haghia Triada and the Water in Late Minoan IIIA-B</i>	47
Kyle A. JAZWA and Kimberley A.M. VAN DEN BERG, <i>The Way of Water: The Influence of Water on Ex Novo Settlement Locations During the LBA Collapse</i>	53
Stella KATSAROU and Andreas DARLAS, <i>Water in Caves: Aspects of Social Ecology in the Bronze Age Mainland and the Aegean</i>	75
Myrsini GKOUMA, Panayiotis KARKANAS, Thomas M. BROGAN, Chrysa SOFIANOU, and Yannis PAPADATOS, <i>Minoan Occupation in Wetland Areas: Results from the Geoarchaeological Study of Minoan Habitation in the Area of Ierapetra, East Crete</i>	83
Daniel J. PULLEN, Thomas F. TARTARON, and Richard K. DUNN, <i>Wringing Water out of a Karstic Landscape: Fissures, Faults, and Terraces at Late Bronze Age Kalamianos</i>	91
Simona TODARO, <i>Coastal Marshes and Water Engineering Works in Crete at the Onset of the 2nd Millennium BC: New Insights from Phaistos and Patrikies</i>	99
Marie FLOQUET, Michael J. BOYD, Myrsini GKOUMA, Joshua WRIGHT, James HERBST, Tim KINNAIRD, Evi MARGARITIS, Ioanna MOUTAFI, Giorgos GAVALAS, and Colin RENFREW, <i>Rainwater as Threat and Opportunity: Terraces and Water Management in the Early Bronze Age Cyclades in the Light of Recent Data from Keros</i>	109
Nasser Bovoleti AYASH, <i>The Role of the Waterscape in Enhancing the Understanding of the Locations of the Minoan Tholoi of the Asterousia and Messara</i>	121
Giorgios VAVOURANAKIS, <i>An Elemental Approach to Water in Minoan Crete</i>	131

Nikolaos PAPANIMITRIOU, <i>Rivers, Floods and Wetlands in Prehistoric Attica</i>	141
Jan Paul CRIELAARD, Lou GODEFROY, and Taariq Ali SHEIK, <i>The Importance of Wetlands in the Late Bronze and Early Iron Age Aegean</i>	151
<b>II. WATER MANAGEMENT AND TECHNOLOGY</b>	
Stephanie AULSEBROOK and David MASON, <i>Need this don't Need that: Aspects of Water Management at Late Bronze Age Mycenae</i>	163
Ilaria CALOI, <i>Looking for Minoan Washing Vessels? Pedestalled Basins from Bronze Age Crete</i>	175
Jan DRIESSEN, <i>Water and Waste – The Role of Water in the Court Building at Sissi</i>	183
Jason W. EARLE, Alexander ASTON, and Michael Deniz YILMAZ, <i>Water Management in the Early Cycladic II and Late Helladic III C Middle Developed Periods on the Koukounaries Hill, Paros</i>	191
Michael LANE, <i>Antecedents to the Drainage at Gla: Implications of Prepalatial Hydraulic Engineering of the Kopaic Basin</i>	199
Stelios PERRAKIS, <i>The Transformation of a Waterscape: The Case Study of the Kato Zakros Valley</i>	211
Yannick DE RAAFF, <i>Drainage Systems in Settlements of Middle Helladic and Early Late Helladic Mainland Greece</i>	219
Kim SHELTON, <i>Well, Well, Well (?): Water Management and Use at Petsas House, Mycenae</i>	231
David Michael SMITH, <i>Hydor, Hygiene and Water Management at Bronze Age Phylakopi, Melos</i>	237
Jeffrey S. SOLES, Costis DAVARAS †, Chrysa SOFIANOY, and Georgios DOUDALIS, <i>1000 Years of Water Management at the Minoan Town of Mochlos (EM I-LM IB, 3100-1430 BC)</i>	247
Daniel J. FALLU, Georgia TSARTSIDOU, Leonidas VOKOTOPOULOS, Sara CUCCHIARO, Eugenio STRAFFELINI, Andreas LANG, Chiara BAHL, Robert SCAIFE, Alistair MONTEATH, Stella CHRYSOULAKI, and Antony G. BROWN, <i>Land and Water Management at Choïromandres, Zakros in the Second Millennium BC: A Geoarchaeological Study on Climatic Conditions, Erosion, Soils and Cultivation</i>	251
Aleydis VAN DE MOORTEL, <i>Water Management in the Bronze Age and Early Iron Age Coastal Community of Mitrou, Central Greece</i>	271
Elisabetta BORGNA and Simona TODARO, <i>Phaistos and the Sea. Searching for Landing Places along the Western Mesara Coast: A Diachronic Perspective</i>	281
<b>III. WATER IN CULTURAL PRACTICES</b>	
Thomas G. PALAIMA, <i>Cultural Attitudes Towards Water and its Importance in Mycenaean Palatial Culture: An Intertextual Approach</i>	293
Mary K. DABNEY, <i>Water in Mycenaean Mortuary Practices</i>	307

Lucia NIXON, <i>Minoan Neopalatial Flowing Water Cults</i>	311
Kiki BIRTACHA, Georgios VOUGIOUKALAKIS, Christina GIAMALI, Irene NIKOLAKOPOULOU, Fragoula GEORMA, Ioannis BITIS, and Anna KOUTROULI, <i>Tsunamiogenic Deposit in the LBA Akrotiri Settlement and its Interpretation</i>	323
Christos AGOURIDIS and Leonidas VOKOTOPOULOS, <i>Ἐπὸν ἕδωρ: The Use of Water at the Sacred Caves of Adiawtos and its Significance for the Rites</i>	333
<b>IV. FISHING AND AGRICULTURE</b>	
Lynne A. KVAPIL, <i>Eating From Field and Fen: Water in Food Production and Procurement in Late Bronze Age Greece</i>	351
Gypsy C. PRICE, <i>Isotopic Currents: Tracking Transhumance Practices in Domesticated Livestock at Bronze Age Mycenae</i>	359
Jacqueline S. MEIER and Kim SHELTON, <i>What's the Catch of the Day? Water, Food, and Animals at Petsas House, Mycenae</i>	365
<b>V. COASTAL INFRASTRUCTURE AND CONNECTIVITY</b>	
Pietro MILITELLO and Dario PUGLISI, <i>How Much Water does a Minoan Settlement Need? Water and Water Management at Ayia Triada and Phaistos in the Palatial Period</i>	375
Thomas M. BROGAN, Chrysa SOFIANOU, Vili APOSTOLAKOU, Melissa EABY, and Dimitra MYLONA, <i>East Cretan Maritime Coastscapes and Small Worlds During the Middle and Late Bronze Ages</i>	387
Susan C. FERRENCE, Chrysa SOFIANOU, Philip P. BETANCOURT, Alessandra GIUMLIA-MAIR, Konstantinos CHALIKIAS, Melissa EABY, J. Mark KENOYER, and Geoffrey E. LUDVIK, <i>Maritime Coastscapes and Big Worlds: Crete and the East in the Late Bronze Age</i>	395
Giorgia DI LORENZO, <i>Territory Occupation and Exchange Paths with the Central Mediterranean in the Post-Palatial Era through the Waterscapes: Some Case Studies from Western and N-Western Greece</i>	405
Louise A. HITCHCOCK and Caroline J. TULLY, <i>The Connecting Sea: The Aegean as Central to a Mediterranean Agorocracy</i>	417
Max K. MacDONALD, <i>Harbours and Hinterlands: Reconstructing Maritime Cultural Landscapes in Mycenaean Messenia</i>	427
<b>VI. ICONOGRAPHY OF WATER</b>	
Fritz BLAKOLMER, <i>Water and Earth in Aegean Iconography: The Pictorial Formulae of Terrestrial Rockwork and Coralline Forms ... and Some Misconceptions by Aegean Artists</i>	443
Eleni DRAKAKI, <i>A Historical and Contextual Approach of the Ownership of Hard Stone Seals with Motifs of Waterbirds from the Late Bronze Age Greek Mainland</i>	451
Emily C. EGAN, <i>New Thoughts on the Knossos Argonaut Frieze</i>	463

Karen Polinger FOSTER, <i>Wondrous Waterscapes: Floating Flowers and Flying Fish in Aegean Island Art</i>	469
Marianna NIKOLAIDOU and Nikos MEROUSIS, <i>Seascapes and Aquatic Symbolism in the Funerary Iconography of Postpalatial Crete</i>	483
Laetitia PHIALON, Vassilis ARAVANTINOS, and Evi TSOTA, <i>A Re-Examination of Water-Related Motifs from Tanagra: Contribution to the Study of Aegean Late Bronze Age Funerary Symbolism and Beliefs</i>	497
Vassiliki PLIATSIKA, <i>The Elusive Waterscapes of Mycenaean Pictorial Pottery</i>	509
Elizabeth SHANK, <i>Depictions of Water in Miniature-Style Wall Paintings: Part 2</i>	519
Anna PHILIPPA-TOUCHAIS, <i>The Waterscape of the Argolid and the first Depictions of Birds in Late Middle Helladic and Early Late Helladic Figurative Pottery</i>	525
Andreas G. VLACHOPOULOS, <i>“Nilotic” Versus “Aquatic” in Aegean Art</i>	537
Marisa MARTHARI, <i>A Footed Jar with a Longboat Depiction from the New Excavations at the Chalandriani Cemetery: Insights into Longboats and Society in the EBA Cyclades</i>	547
<b>CLOSING SESSION</b>	
Judith WEINGARTEN, <i>Closing Address</i>	561

# LOOKING FOR MINOAN WASHING VESSELS? PEDESTALLED BASINS FROM BRONZE AGE CRETE\*

## Introduction

In this paper I will present a Minoan vase — a tall, pedestalled basin — which is very common in Southern Crete, especially at Phaistos (Pl. LXVIIIa-b), in the First Palace or Protopalatial period (Middle Minoan IB-Middle Minoan IIB), corresponding to the XIX–XVIII cent. BC. The vase has been interpreted by the excavators of Phaistos, and especially by Doro Levi and Filippo Carinci,<sup>1</sup> as a washing basin and called *louter*.

The vessel is a pedestalled basin consisting of a tall, tubular hollow pedestal on a large base and on the top a large bowl with a thickened and flaring rim (Pls LXXI-LXXII).<sup>2</sup> All the retrieved examples are high: they range from 47 to 63cm, and the basin has a diameter going from 40 to 57cm. The base of the pedestal can reach 28cm (e.g. F. 3558 in Pl. LXXIe). This kind of vessel is usually plain, not painted, but below the basin, on the support, there are some diagonal relief bands, sometimes impressed, with possibly a double function: to decorate the vessel and to help the connection between the support and the basin. The support may have two opposite holes, which are likely produced to favor the cooking of the vessel, as it is often attested for footed lamps or braziers. The exterior surface of the basin is rough, while the interior is covered with a thick slip, very smooth and sometimes burnished, which could have been used to make the surface waterproof.

In the next pages, I will first focus on the specimens found at Phaistos and their finding contexts, then on those retrieved from outside the Minoan site of Phaistos, which are few and mainly concentrated in Southern Crete. The aim is to better understand the function of this peculiar vase and its possible connection with water. It will be argued that pedestalled basins could have been used as washing basins both for domestic use and for purification rituals on the occasion of ceremonial events.

## The pedestalled basins from Phaistos

Phaistos has revealed several examples coming both from the First Palace and from the houses and quarters outside it (Pl. LXVIIIb). First, I will present the pedestalled basins found *in situ* and following a chronological order, namely from M(iddle) M(inoan) IB through to the MM IIB, then I will deal with the specimens found in secondary depositions, which are mainly fills.

The most ancient pedestalled basin found *in situ* at Phaistos (F. 886: Pls LXIXa) comes from Ayia Photeini, a quarter located on the north-east slopes of the palace hillside (Pl. LXVIIIb). The pedestalled basin was retrieved from Room β, which is part of a two-room complex in use from MM IB to MM IIA.<sup>3</sup> This space is remarkable for several reasons: 1) it is a working place for domestic activities connected with food preparation; 2) it contains assemblages of entire vessels found *in situ* (something which is rarely found in this phase). The focus of the activities of this room is a bench filled-in with vases, where there is a *pitthos*, associated with two containers, a millstone, and its grinder,<sup>4</sup> the latter likely used for food preparation (Pl. LXIXa). Several assemblages of vases were found all around the filled-in bench. One of these assemblages

---

\* My first thanks go to the organisers of the Hydor Conference in Amsterdam. I am grateful to my *maestro* Filippo Carinci and my colleagues Pietro Militello and Simona Todaro for having discussed with me many aspects of this paper. A special thanks to Davide Aquini for his help with the plates of this article. The measures reported in the captions are in cm.

<sup>1</sup> D. LEVI and F.M. CARINCI, *Festòs e la civiltà minoica*, vol. II.2 (1988) 14, Pl. 9.

<sup>2</sup> See D. LEVI, *Festòs e la civiltà minoica*, vols I-II.1 (1976) Pl. LV; see LEVI and CARINCI (*supra* n. 1) Pl. 9.

<sup>3</sup> See I. CALOI, “Il vano β e il MM IB ad Haghia Fotini di Festòs,” *ASAtene* 83 (2005) 19-45.

<sup>4</sup> CALOI (*supra* n. 3) figs 3-5.

of artifacts was found next to the east wall: it was composed of a pedestalled basin, a small jug found inside it, and two amphorae (Pl. LXIXa). If the amphorae were used to contain water and the jug to pour it, the pedestalled basin could have been used as a washing basin, likely in connection with some food preparation. This complex was already studied by myself and the evidence seems to indicate that the inhabitants used this space for some stage of food preparation, but not for cooking because the room did not contain any cooking pots.<sup>5</sup>

Two are the pedestalled basins found within the First Palace of Phaistos, and specifically in the main edifice of the Palace, *i.e.* the three-floor South-West Building located in the lowest terrace of the Palace hill (Pl. LXVIIIa). They both come from the MM IIB destruction levels of the palatial building at the first floor. The first specimen is a complete pedestalled basin retrieved from Room LIII – first floor (F. 1787 in Pl. LXXIb), while the second is a fragmentary one coming from Room XXVIII – first floor (F. 958 in Pl. LXXIc). They are located respectively at the beginning and at the end of an indoor ceremonial route reconstructed by Carinci at the first floor of the South-West palatial Building (Pl. LXIXb).<sup>6</sup> Pl. LXIXb illustrates the cluster of rooms interested by this route (Rooms LIII, LI, LIV and LV, XXVII-XXVIII). Carinci has already studied and interpreted these rooms as connected with preparation of liquids for ritual activities,<sup>7</sup> and also for cult activities, especially in Room XXVIII.<sup>8</sup>

Room LIII (Pl. LXIXb) is the first of this cluster of rooms and is likely a passageway used to give access to the most interior rooms of the Palace. At the time of the Palace destruction, in MM IIB, Room LIII contained only a few vases placed at the southwest and northwest corners of the room, which are a pedestalled basin, a horned vase, a small *pithos* or *pitharaki*, and a basin.<sup>9</sup> The pedestalled basin and the horned vase were found in the southwest corner, while the other two vessels in the northwest one.

Room LI (Pl. LXIXb) is a small room, likely a storage room, equipped with a bench and a *doulapa*, located against the north wall. Here were found four *pitharakia*, one stamnos, two pouring vessels, and three special vessels, including an elaborate pedestal. This room was interpreted as a specialised storeroom for specific liquids, contained in the *pitharakia*.<sup>10</sup> It remains to understand, however, whether these *pitharakia* could have been used to contain water.

Room LV (Pl. LXIXb) is another storage room intended to accommodate medium-sized containers, mostly amphorae. This high concentration of *amphorae* has pushed Carinci to interpret this room as a specialised storeroom for the liquids contained in the *amphorae*.<sup>11</sup> Room LIV (Pl. LXIXb) is similar in function to Room LV, as it contained several *pitharakia*.

In the northeastern corner, Room XXVIII A-B (Pl. LXIXb) is a blind recess, which, according to Carinci, in its MM IIB phase was used for ritual purposes or as a cult room.<sup>12</sup> No drinking, pouring or storage vessels have been reported by Carinci.<sup>13</sup> Together with the fragmentary pedestalled basin, this room has revealed one of the two fragments of the well-known fruitstand depicting figures interpreted as a goddess with her worshippers (in Italian: “*dea e le sue adoranti*”).<sup>14</sup>

The indoor ceremonial route reconstructed by Carinci for the first floor of the South-West Building, visible in Pl. LXIXb, starts from Room LIII, reachable through the stairs coming from the ground floor, then moves to two focal points — Room LI and Room LV — and finally from Room LV it

<sup>5</sup> CALOI (*supra* n. 3) 26-28.

<sup>6</sup> F. CARINCI, “Le ceramiche e i nuovi dati di scavo,” in L. BESCHI, A. DI VITA, V. LA ROSA, G. PUGLIESE CARRATELLI, and G. RIZZA (eds), *I Cento anni dello Scavo di Festòs, Roma, 13-14 dicembre 2000* (2001) 477-515.

<sup>7</sup> CARINCI (*supra* n. 6) 486-493.

<sup>8</sup> F. CARINCI, “Per una rilettura funzionale dell’ala Sud-occidentale del Palazzo di Festòs: il caso dei vani IL-XXVII/XXVIII,” *CretAnt* 12 (2011) 98.

<sup>9</sup> CARINCI (*supra* n. 6) 491, 494, fig. 13.

<sup>10</sup> CARINCI (*supra* n. 6) 486-489, figs 7-10 and fig. 3.

<sup>11</sup> CARINCI (*supra* n. 6) 491-493, fig. 13.

<sup>12</sup> CARINCI (*supra* n. 8) 115; IDEM (*supra* n. 6) 98.

<sup>13</sup> CARINCI (*supra* n. 8) 108-109, figs 88-89.

<sup>14</sup> See the fruitstand F. 786 and F. 65 in LEVI (*supra* n. 2) 90, Pls 160, LXV-LXVI; see also LEVI and CARINCI (*supra* n. 1) 189.

proceeds until the easternmost room, *i.e.* Room XXVIII. According to this ceremonial route, there would be a pedestalled basin found in the first room, Room LIII (the passageway), where it is possible to see an equipment for ablutions represented by the pedestalled basin and perhaps the basin, with a vessel intended to hold water for them (*piṭharaki*).<sup>15</sup> Then, the second pedestalled basin from Room XXVIII, the last space of the route, could have been used in association with the abovementioned fruitstand with a goddess and her worshippers.<sup>16</sup>

Other two complete examples were found respectively in the MM IIB house located in the lowest terrace of the Quarter located to the West of the palatial Middle West Court (Pl. LXVIIIa) and in the Chalara Quarter (Pl. LXVIIIb). In the Quarter West of the Middle West Court, one pedestalled basin was found in Room LXXXV (Pl. LXVIIIa), which is part of a big house, the richest houses of the Protopalatial period (Pl. LXXa).<sup>17</sup> According to the study of Aurelia Speziale,<sup>18</sup> this house was inhabited by someone working for the Palace and connected to the palatial administrative functions. The house has indeed revealed both spaces used for non-domestic storage, like Room XCIV with 533 its whole vessels, likely deposited in shelves, and rooms for private use, like Room LXXXV, where a seal has been found.<sup>19</sup>

Room LXXXV is characterized by a red stucco floor, where a stone slab, plausibly used as a *trapeza*, was found together with a lamp re-used as a fix brazier in the middle of the room.<sup>20</sup> The ceramic deposit from the MM IIB destruction level found on the red stucco floor of the room has revealed 72 mendable vases, which are mainly conical cups, straight-sided cups, but also other vessels used for food preparation, like cooking pots and dishes, and containers as well.<sup>21</sup> The pedestalled basin (F. 5064 in Pl. LXXXId) was found on the stucco floor of the room and likely used in connection with these vases.

The Chalara Quarter is situated on the south-east hillside of the Phaistos Palace (Pl. LXVIIIa), near the river Ieropotamos. Like the Ayia Photeini Quarter, this one also develops on terraces set on the hill slopes. The MM IB phase is represented by five rooms (ζ<sup>1</sup> to ζ<sup>5</sup>), located in the northwest corner of the north area, while the MM II phase is represented by Room δ-ε and Corridor η in the upper part to the hill (Pl. LXXb).<sup>22</sup> Here the stratigraphy is complicated because of the super-imposed Neopalatial and then Geometric houses. Corridor η has revealed only a few vessels on the floor, reported as coming from the south corner; among them there is the mendable pedestalled basin F. 3558 (Pl. LXXIe), interpreted by Levi as a sink.<sup>23</sup> Unfortunately, because of the scarcity of ceramic material from this corridor, its specific use is difficult to hypothesise, but it is possible that it was a passage to the nearby room Room δ-ε (Pl. LXXb), which was equipped with benches against two walls of the space and likely used for consumption activities.

Together with these examples, other fragmentary pedestalled basins come from secondary depositions in the Phaistos town. Two of them were found in two MM IIA deposits of the First Palace, both related with the renovation works of the South-West Building and adjacent areas.<sup>24</sup> The first one is a

<sup>15</sup> CARINCI (*supra* n. 6) 491.

<sup>16</sup> CARINCI (*supra* n. 8) 115.

<sup>17</sup> LEVI (*supra* n. 2) 521, F. 5064, Pl. 55d; see A. SPEZIALE, “Il MM II: la casa LXXXI-LXXXV, XCIV-XCV,” in BESCHI *et al.* eds (*supra* n. 6) 157-167.

<sup>18</sup> SPEZIALE (*supra* n. 17) 160-161.

<sup>19</sup> SPEZIALE (*supra* n. 17) 160-161; the seal (F. 6698) is published in LEVI (*supra* n. 2) 523, fig. 812.

<sup>20</sup> LEVI (*supra* n. 2) 520-522, figs 805, 807-808. See also SPEZIALE (*supra* n. 17) 160-161.

<sup>21</sup> SPEZIALE (*supra* n. 17) 163, Table III.1

<sup>22</sup> LEVI (*supra* n. 2) 653-679. See I. CALOI, “MM IB Houses at Phaistos: Function and Relationship to the Community Palace,” in K. GLOWACKY and N. VOGELKOFF-BROGAN (eds), *STEGA. The Archaeology of Houses and Households in Ancient Crete from the Neolithic Period through the Roman Era* (2011) 71-80. See also I. CALOI, *Festòs Protopalaziale. Il Quartier ad Ovest del Piazzale I. Strutture e ritrovamenti delle terrazze mediana e superiore* (2013), 272-274.

<sup>23</sup> For Corridor η see LEVI (*supra* n. 2) 662-664, figs 1071-1072; for the pedestalled basin: F. 3558, 663, fig. 1072, Pl. 55a.

<sup>24</sup> I. CALOI, “Renovating the First Palace of Phaistos during the Middle Minoan IIA Phase (18th cent. BC). Combining Architectural and Ceramic Phases,” *RdA* 44 (2021) 3-19.

bowl rim fragment of a pedestalled basin (Pl. LXXIIa) retrieved from the MM IIA platform deposit of Room II — ground floor, in the South-West Building (Pl. LXVIIIa); this deposit is the result of a feasting hoard accompanying a construction event — a building and commemorative deposit, *i.e.* the material mnemonic record of an exceptional and memorable event connected to the renovation of the South-West Building.<sup>25</sup> The second one is the bowl of a pedestalled basin still preserving the relief bands (Pl. LXXIIb), which comes from the MM IIA homogeneous dump found between the MM IB northern edge wall of the Lower West Court, *Bastione I*, and the MM IIA one, *Bastione II* (Pl. LXVIIIa). The *Bastione II* dump, whose pottery gives a *terminus ad quem* for the construction of *Bastione II*, contains a great variety of construction debris (*e.g.* white intonaco and red stucco fragments), interpreted as discarded material from working activities in the area (most likely in the South-West Building),<sup>26</sup> and large quantities of pottery, namely hundreds of plain handleless conical cups, many pouring vessels and cooking pots, associated with animal bones. This suggests that it also contained the remains of feasting activities, likely connected with the MM IIA re-building operations of the South-West palatial Building and adjacent court.<sup>27</sup>

A fragmentary pedestalled basin, which preserves only the hollow pedestal (F. 2369: Pl. LXXIIc), was retrieved from a Protopalatial fill excavated by Levi below the Neopalatial Room 98 (Pl. LXVIIIa), to the South-West of the Central Court.<sup>28</sup> The context is not clear, but the pedestalled basin is interesting because its pedestal is decorated with impressed relief bands (Pl. LXXIc).

The last specimen, which consists of a large rim fragment of a basin (Pl. LXXIIId), comes from the MM IIA fill retrieved below the floors of Rooms CVI and CVII, in the *Acropoli Mediana* Quarter (Pl. LXVIIIb).<sup>29</sup> This fill has been interpreted by Giorgia Baldacci as the result of ceremonial activities, possibly connected with the renovation of the quarter rooms.<sup>30</sup>

It appears therefore that most of the fragmentary pedestalled basins found in Protopalatial fills at Phaistos come from ceramic deposits resulting from ceremonial activities. This would hint at a ceremonial use of these pedestalled basins.

### The pedestalled basins found outside Phaistos, in Southern Crete

Outside Phaistos, the shape is known mainly in the Mesara plain, in Southern Crete. Exact parallels, interpreted as exports from Phaistos, were found in the settlements of Ayia Triada and Monastiraki, and in the necropolis of Koumasa.

Ayia Triada is a settlement located near Phaistos and it represents one of the three points in the so-called ‘great Minoan triangle of the Mesara’ — the other two being the palatial centre of Phaistos and the harbour town of Kommos. According to Carinci, in the Protopalatial period Ayia Triada is a small village, dependent on the Phaistos Palace, which shares the same ceramic production of Phaistos.<sup>31</sup> Thus, it is not odd to find imported vases from Phaistos in this settlement.

<sup>25</sup> I. CALOI, “Memory of a Feasting Event in the First Palace of Phaistos: Preliminary Observations on the Bench Deposit of Room II,” *CretAnt* 13 (2012) 41-59; EADEM, “Visible and Commemorative Structured Deposits. Keeping the Memory of Communal Social Practices at Minoan Palace,” in E. BORGNA, I. CALOI, F. CARINCI, and R. LAFFINEUR (eds), *MNHMH/MNEME. Past and Memory in the Aegean Bronze Age. Proceedings of the 17<sup>th</sup> International Aegean Conference, University of Udine, Department of Humanities and Cultural Heritage, Ca’ Foscari University of Venice, Department of Humanities, 17-21 April 2018* (2019) 115-120.

<sup>26</sup> I. CALOI, “Ristrutturando il Primo Palazzo di Festòs. Materiali di scarto dallo scarico del Bastione II,” in F. LONGO, R. DI CESARE, and S. PRIVITERA (eds), *DROMOI. Studi sul mondo antico offerti a Emanuele Greco dai suoi allievi della Scuola Archeologica Italiana* (2016) 425-436.

<sup>27</sup> CALOI (*supra* n. 24).

<sup>28</sup> LEVI (*supra* n. 2) 418, fig. 643, Pl. 55c.

<sup>29</sup> G. BALDACCI, *L’edificio protopalaziale dell’Acropoli Mediana di Festòs (Vani CV-CVII)* (2017) 208, cat. n. 434 (inv. FE 907a/5), fig. 4.10, Pls 44, 92.

<sup>30</sup> BALDACCI (*supra* n. 29) 243.

<sup>31</sup> F. CARINCI, “Haghia Triada nel periodo Medio Minoico,” *CretAnt* 4 (2003) 97-143.

The MM IB–MM IIB deposits come from different areas of the settlement, but unfortunately, most of them are fills and thus we do not have any information about the context<sup>32</sup>. The bowl of a fragmentary pedestalled basin is reported by Carinci as coming from the fills found in the North-East Sector.<sup>33</sup>

A complete example was found in another town near Phaistos, Monastiraki,<sup>34</sup> which is located in the Amari Valley, on the route going towards the northern part of the island. The context of the vessel is not known. In her 1999 publication, Athanasia Kanta reports traces of orange red paint both inside and outside the bowl,<sup>35</sup> something that is not attested in the Phaistian examples. The specimen was, however, published as a Phaistian production. The site has actually revealed several imports from Phaistos, especially jugs and pithoi, and it was interpreted as a satellite village of the Phaistos palace, likely connected with its administrative functions.<sup>36</sup>

The last one was found in a funerary complex, that is the tholos tomb E from the cemetery of Koumasa. The work of Diamantis Panagiotopoulos at the site is still ongoing,<sup>37</sup> thus we only have the data from Stephanos Xanthoudides,<sup>38</sup> who first excavated the necropolis last century. The specimen is reported by Xanthoudides as a pedestalled lamp,<sup>39</sup> but in fact it is a pedestalled basin probably imported from Phaistos. We do not know the finding context and associations of the vessel, but this is the sole pedestalled basin so far retrieved from a necropolis and especially from a tomb. This example thus opens the possibility that pedestalled basins were used not only for a domestic and ceremonial use, but also for some kinds of ritual ablutions or purifications in occasion of funerals.

### Conclusions: contexts and function of pedestalled basins

The pedestalled basins found in Middle Bronze Age Crete are few and mainly concentrated at Phaistos and in Southern Crete. The shape is not common in other Minoan contexts outside the Mesara plain. Indeed, this vessel should not be confused with the decorated pedestalled bowls retrieved from Minoan Palaces — Knossos, Phaistos and Malia, funerary complexes (e.g. the *Pierres Meulières* necropolis at Malia) and high-profile buildings of Minoan settlements, like Palaikastro.<sup>40</sup> These vessels are not only particularly elaborate and decorated, but they are all provided with a hole in the middle of the bowl, likely used for some kind of libations.<sup>41</sup>

Focusing on the possible function(s) of the pedestalled basin in Middle Bronze Age Crete, on the basis of the contexts and associations considered in this paper, it is likely that this vase was used in association with water as a washing basin for the following reasons: 1) its smooth and burnished surface in the interior face; 2) its position in the corners of rooms, in passageways or in corridors; 3) its association with amphorae and *pitharakia*, or with other vessels for domestic use, like jugs. If pedestalled basins were utilized as washing basins to wash hands or vessels, we can thus suppose that the *pitharakia* associated with them could have been used to contain water. It is likely that at Phaistos the water was collected in big *pithoi* — usually conserved on ground floor — and then moved in smaller containers, like *pitharakia*, to be used

<sup>32</sup> CARINCI (*supra* n. 31). See also G. BALDACCI, *Haghia Triada (Crete) nel periodo protopalaziale: la ceramica dagli scavi 1977-2011 dall'area dell'insediamento*, PhD Unpublished Dissertation (2013).

<sup>33</sup> CARINCI (*supra* n. 31) 14, fig. 7c (HTR 92 2342).

<sup>34</sup> A. KANTA, “Monastiraki and Phaistos, Elements of Protopalatial History,” in P.P. BETANCOURT, V. KARAGHEORGHIS, R. LAFFINEUR, and W.D. NIEMEIER (eds), *MELETEMATA. Studies in Aegean Archaeology Presented to Malcolm H. Wiener as He enters his 65th Year* (1999) 393, Pl. LXXXIIIe.

<sup>35</sup> KANTA (*supra* n. 34) 393. The measures of the Monastiraki pedestalled basin are reported as follows: 60 cm high, rim diam. 54 cm, base diam. 26 cm.

<sup>36</sup> KANTA (*supra* n. 34) Pls LXXXII-LXXXIII.

<sup>37</sup> See for example D. PANAGIOTOPOULOS, “Ανασκαφή Κουμάσας,” *Prakt* 173 (2018) 477-506; IDEM, “Ανασκαφή Κουμάσας,” *Prakt* 174 (2019) 443-473.

<sup>38</sup> S. XANTHOUDIDES, *The Vaulted tombs of Mesara* (1924).

<sup>39</sup> XANTHOUDIDES (*supra* n. 38) 42, n° 4305, Pl. XXXVI.

<sup>40</sup> I. CALOI, “Pedestalled Bowls with a Central Hole in Protopalatial Crete: A Ritual and Communal Function?,” *ASAtene* 100.1 (2022) 9-24.

<sup>41</sup> CALOI (*supra* n. 40) 11-12, figs 2-3.

in indoor spaces at the upper floors of the palace. This solution was suggested also for the Quartier Mu at Malia.<sup>42</sup>

If the use of pedestalled basins as washing basins is plausible in domestic contexts like the abovementioned Phaistian houses of Ayia Photeini, of the Quarter West of the West Court and of Chalara as well, it remains, however, to understand if they were also used for ablutions or purifications rituals on some specific contexts or occasions. The position and associations of pedestalled basins observed respectively in Phaistian Room LIII and XXVIII (Pl. LXIXb), two palatial rooms that Carinci has already interpreted as ritual places or even cult places, could hint at this use. Moreover, the Koumasa specimen from Tholos tomb E opens the possibility that it was indeed used for ritual purifications in funerary contexts.

It appears that these kinds of pedestalled basins did not continue in the following Late Bronze Age, where they are not attested at all. The pedestalled basins cannot be compared or confused with the LM I decorated footed or pedestalled fruitstands, which were likely used as serving vessels,<sup>43</sup> neither with the *kalathoi* equipped with internal handles, known at Palaikastro.<sup>44</sup> Since we do not have any good parallels in the later period, can we consider the possibility that these Middle Bronze Age pedestalled basins were the predecessors of the bathtubs (*asimanthoi*), common both in Crete and in other Aegean contexts in Late Bronze Age? In the island of Thera, the complex Delta of Akrotiri has revealed a bathtub in the corner of Room Delta 1 associated with *amphorae*.<sup>45</sup>

So far, these peculiar pedestalled basins are attested almost exclusively in Southern Crete and it appears that they reflect a habit typical of Protopalatial Phaistos, which was then adopted by the sites sharing the same ceramic productions of the palatial centre. I hope that future excavations and research in Minoan Crete will give us more answers on the use/s of these peculiar vessels in connection with water.

Ilaria CALOI

<sup>42</sup> See M. POMADERE and M. ALBERTI, this volume.

<sup>43</sup> See for example E. HATZAKI, “Neopalatial (MM IIIB-LM IB): KS 178, Gypsades Well (Upper Deposit), and SEX North House Groups,” in N. MOMIGLIANO (ed.), *Knossos Pottery Handbook: Neolithic and Bronze Age (Minoan)* (2007) 174, fig. 1.

<sup>44</sup> See references in LEVI and CARINCI (*supra* n. 2) 14.

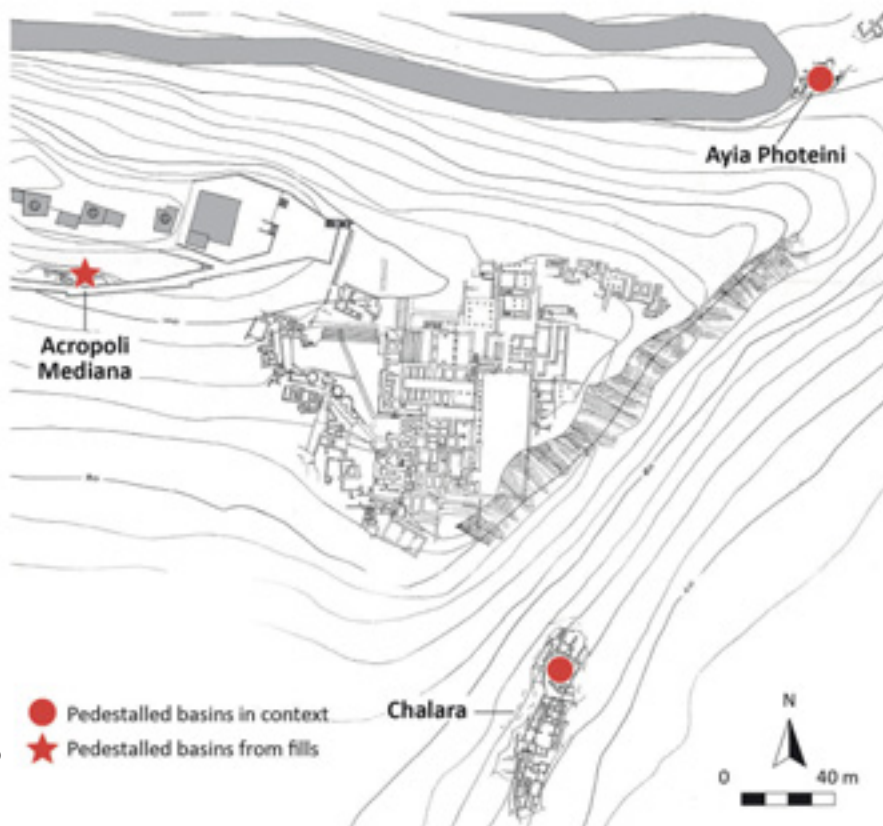
<sup>45</sup> A. PAPADIMITRIOU-GRAMMENOY, “Ακρωτήρι: Αποθήκευση ειδών διατροφής,” in Ch. DOUMAS (ed.), *Ακρωτήρι Θήρας: Τριάντα χρόνια έρευνας 1967-1997. Επιστημονική συνάντηση 19-20 Δεκεμβρίου 1997* (2008) 137-150.

## LIST OF ILLUSTRATIONS

- Pl. LXVIIIa Plan of the main buildings and quarters of the Phaistos First Palace with indications of the finding contexts of pedestalled basins (Revision of E. FIANDRA, "I periodi struttivi del primo palazzo di Festòs," *CretChron* 15-16 [1961-1962] Pl. I).
- Pl. LXVIIIb Plan of the Phaistos town with the palatial structures in the middle, and the quarters around it (Revision of LEVI [*supra* n. 2] Pl. A).
- Pl. LXIXa The pedestalled basin found in Room  $\beta$  at Ayia Photeini in association with a jug (CALOI [*supra* n. 3] 5, figs 4-5).
- Pl. LXIXb The indoor route reconstructed by F. Carinci in the South-West palatial Building of Phaistos with indications of the two pedestalled basins found respectively in Room LIII and Room XXVIII — first floor (Revision of CARINCI [*supra* n. 8] 116, fig. 95B).
- Pl. LXXa The Quarter West of the Middle West Court with its three terraces: on the lowest terrace (in blue) the House with Room LXXXV in the North-East (CALOI [*supra* n. 22] fig. 3).
- Pl. LXXb The Chalara Quarter with MM IB (in red) and MM II rooms (in blue), including Corridor  $\eta$  (Revision of D. LEVI, "Gli scavi a Festòs negli anni 1958-1960," *ASAtene* 39-40 [1958-1960] fig. 171).
- Pl. LXXI Pedestalled basins in context from Protopalatial Phaistos (Photos: LEVI [*supra* n. 2] Pl. LVa, d, e; Drawings: LEVI and CARINCI [*supra* n. 1] Pl. 9).  
 a: F. 886 from Room  $\beta$  (MM IB), Ayia Photeini (h. 47,8; rim diam. 46);  
 b: F. 1787 from Room LIII (MM IIB), South-West Building (h. 54; rim diam. 38,5/40);  
 c: F. 958 from Room XXVIII (MM IIB), South-West Building (rim diam. 48);  
 d: F. 5064 from Room LXXXV (MM IIB), Quarter West of the Middle West Court (h. 59, rim diam. 50, d. base 26,5);  
 e: F. 3558 from Corridor  $\eta$  (MM II), Chalara Quarter (h. 63; rim diam. 57; d. base 28).
- Pl. LXXII Pedestalled basins from secundar fills of Phaistos.  
 a: Inv. no. FE 3/16 12 from the filled-in platform deposit of Room II, South-West Building (h. cons. 10; rim diam. 44; Photo author; Drawing G. Merlati);  
 b: F. 2324 from the MM IIA *Bastione* II dump, Lower West Court (h. cons. 19,5; rim diam. 55; LEVI [*supra* n. 2] Pl. 55b);  
 c: F. 2369 from the Protopalatial levels from below Neopalatial Room 98 (h. cons. 44; d. base 27; from LEVI [*supra* n. 2] Pl. LVc);  
 d: Inv. n. FE 906a/5 from the MM IIA fill of Rooms CVI-CVII, *Acropoli Mediana* Quarter (h. cons. 11; rim diam. 56; BALDACCI [*supra* n. 29] Pl. 44, fig. 4.10).



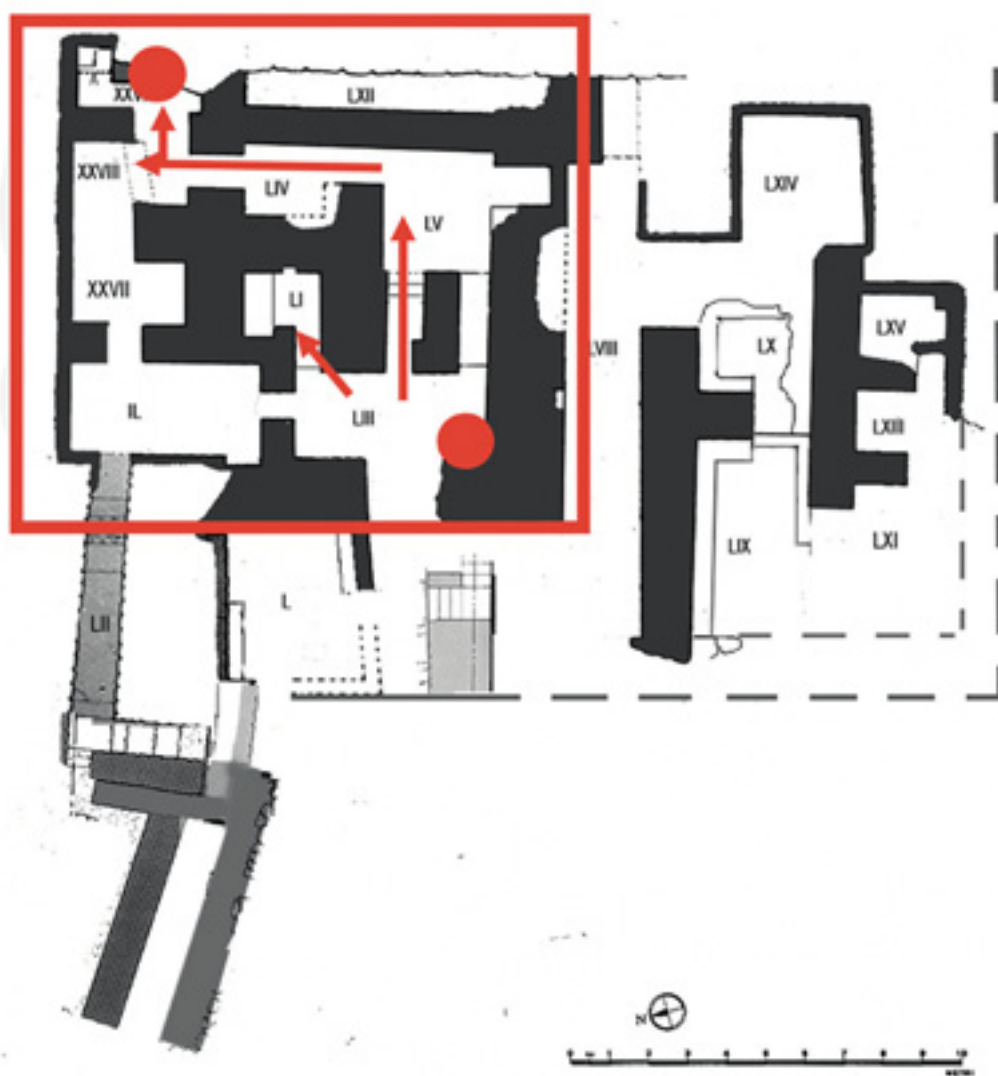
a



b



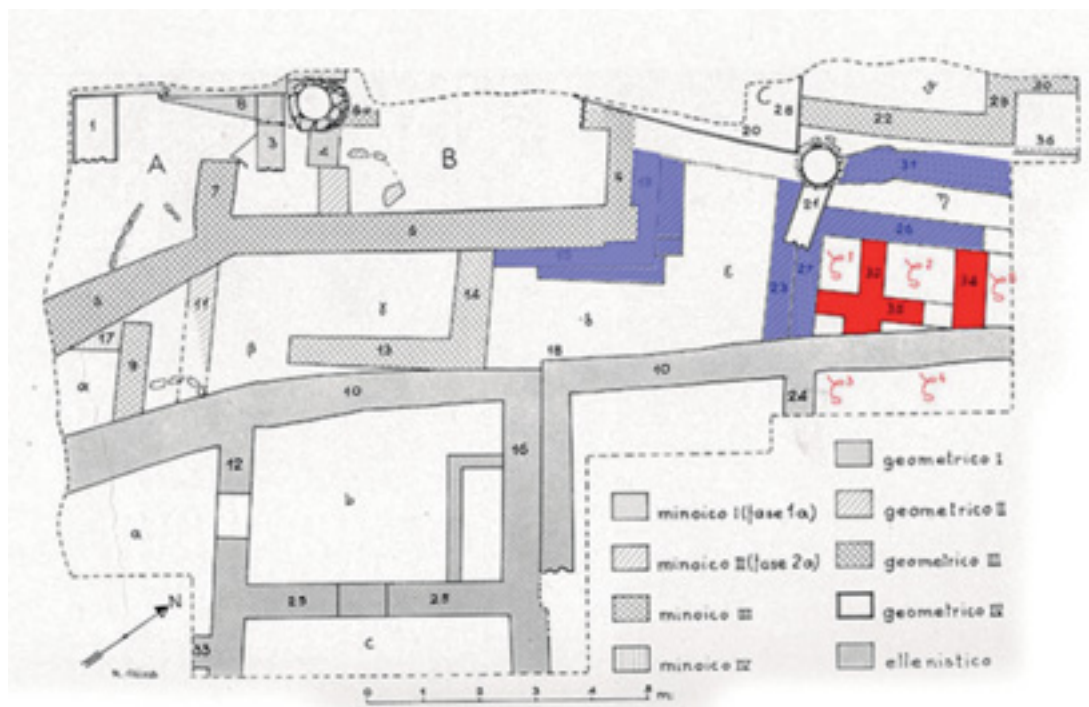
a



b



a



b



a



b



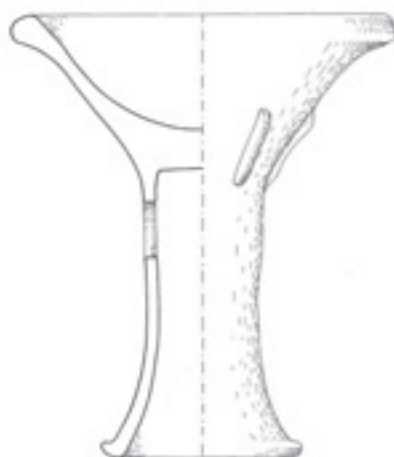
c

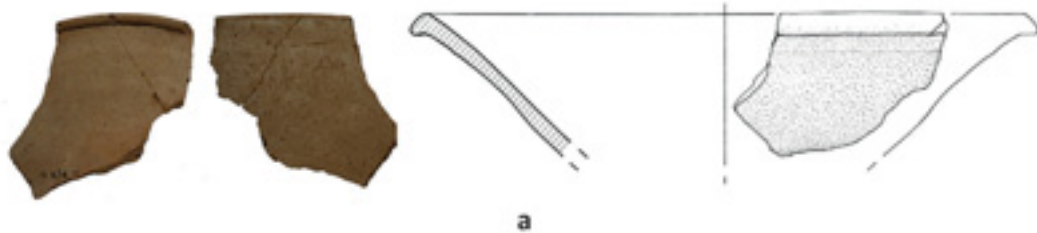


d

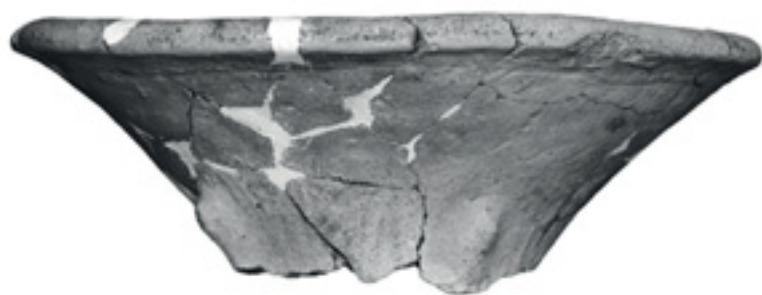


e





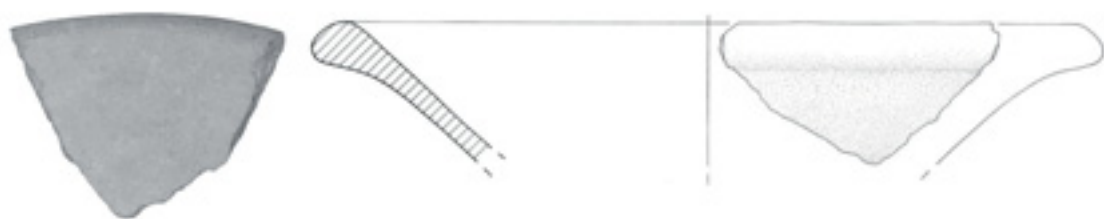
a



b



c



d

